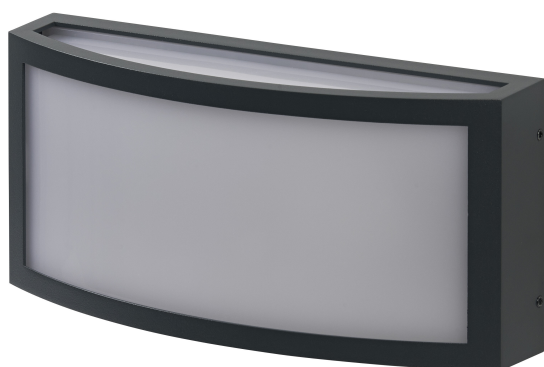


# PRODUCT DATASHEET

## Endura Classic E27 IP65 Cuadra Wall Dark Gray

Endura Classic IP65 E27 | Wall luminaires with dark grey aluminum housing, IP65 protection, frosted diffuser and E27 socket



---

### Areas of application

- Building facades
- Entrance lighting
- Patios, balconies
- Pathway lighting
- Driveways

---

### Product benefits

- High flexibility in the choice of the light source thanks to E27 socket
- Easy and quick installation

---

### Product features

- Die-cast aluminum housing
- Frosted diffuser
- Anthracite housing color
- Type of protection: IP65

## TECHNICAL DATA

### Electrical data

Nominal voltage	220...240 V
Mains frequency	50...60 Hz
Protection class	I
Operating mode	Mains voltage

### Dimensions & Weight

Length	260.00 mm
Width	88.00 mm
Height	120.00 mm
Product weight	710.00 g



ENDURA CLASSIC CUADRA W  
E27 IP65

### Materials & Colors

Product color	Dark gray
Housing color	Dark gray
Body material	Aluminum
Cover material	Polycarbonate (PC)
Glow Wire Test according to IEC 60695-2-12	650 °C

### Application & Mounting

Ambient temperature range	-20...+40 °C
Type of connection	Terminal, 3-Pole (L, N, PE)
Type of protection	IP65
Protection class IK (shock resistance)	IK05
Dimmable	No
Mounting type	Surface
Mounting location	Wall
Application environment	Outdoor
With light source	No
Holder designation	E27

## Certificates & Standards

Standards	CE / UKCA
Luminaire with limited surface temperature, "D sign"	No





## Additional product data

Product remark	Maximum bulb wattage: 40W (15W LED)
Number of illuminants	1

## EQUIPMENT / ACCESSORIES

- Complete mounting and connecting accessories included
- No light sources included

## DOWNLOAD DATA

	Documents and certificates	Document name
	User Instruction	Endura Cuadra
	Legal information	Legal insert I-Outdoor
	Declarations of conformity	Endura Classic IP65
	Declarations Of Conformity UKCA	Endura Classic IP65

## LOGISTICAL DATA

Product code	Packaging unit (Pieces/Unit)	Dimensions (length x width x height)	Gross weight	Volume
4099854182983	Folding box 1	97 mm x 127 mm x 267 mm	795.00 g	3.29 dm <sup>3</sup>
4099854182990	Shipping box 4	280 mm x 220 mm x 305 mm	3554.00 g	18.79 dm <sup>3</sup>

The mentioned product code describes the smallest quantity unit which can be ordered. One shipping unit can contain one or more single products. When placing an order, for the quantity please enter single or multiples of a shipping unit.

## DISCLAIMER

Subject to change without notice. Errors and omission excepted. Always make sure to use the most recent release.