



# EPD Assistant Tool Operation Guide

Product:  
**EP-C251**  
**EP-C131**

## Table of contents

	<b>Page</b>
1. At first	
1.1 Words	2
1.2 About the EPD Assistant Tool	3
1.3 Supported Devices	3
2. Installing the EPD Assistant Tool	
2.1 Installing the EPD Assistant Tool	4
2.2 View app information	6
3. How to enable Bluetooth on the main unit	7
4. How to use the EPD Assistant Tool	
3.1 Pairing	9
3.2 Sending images	11
3.3 Changing settings	15
3.4 Name change	16
3.5 Removing a Device	17
5. Other	
4.1 How to change permissions for nearby devices (Android 12/13)	18
4.2 How to change location permissions (Android 11)	19
4.2 How do I change permissions for access to photos and media on my device? (Android 11/12/13)	20

# 1. At first

## 1.1 Words

Words	Definition
OS	An operating system
ePaper body	The main body of the electronic paper display.
device	The e-paper display body that is connected on the application when connected via Bluetooth.
Mobile devices	Smartphones and tablets. Target OS: Android

# 1. At first

## 1.2 About EPD Assistant Tool

You can change the settings of the image and screen displayed by connecting the ePaper unit to the mobile device via Bluetooth.

\* This application is third-party software and Sharp takes no responsibility for it. Use the provided application at your own risk.



\* Security of communication data

For the security of communication data, we use the Bluetooth encryption function and connection authentication function.

When using this application, it is possible to change the settings of the displayed image and screen regardless of whether or not the encryption key is set on the ePaper itself.

## 1.3 Compatible Devices

Device Type	OS	Supported Versions
Mobile devices	Android	Android 11 or later

\* Please update the firmware of the ePaper to Ver.1.3.3 or later.

\* It is not guaranteed to work on all mobile devices.

Also, the screen and name vary depending on the mobile device used. This operation guide describes the general operation procedure.

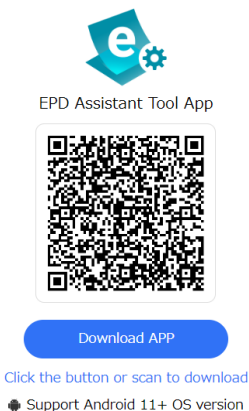
## 2. Installing the EPD Assistant Tool

### 2.1 Installing the EPD Assistant Tool

The EPD Assistant Tool downloads and installs the application from the QR code displayed on the EPD Assistant Tool download page.

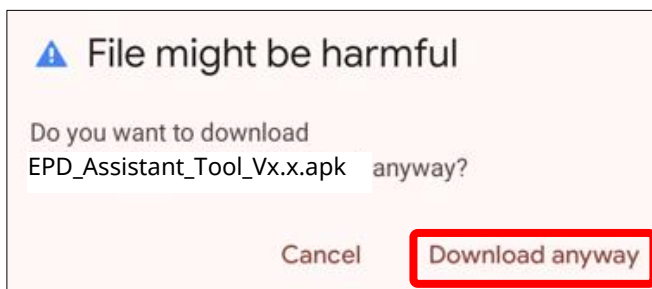
1. Access the EPD Assistant Tool download page from a PC browser.

URL: <https://epaper.tpv-tech.com/downloads/epd-assistant-tool-for-shp/>

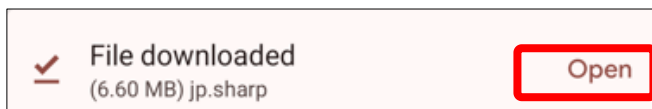


2. Scan the QR code on your mobile device and download the installation file. You can also download it directly from your mobile device's browser.

If the following screen dialog is displayed at the time of downloading, tap "Continue download".

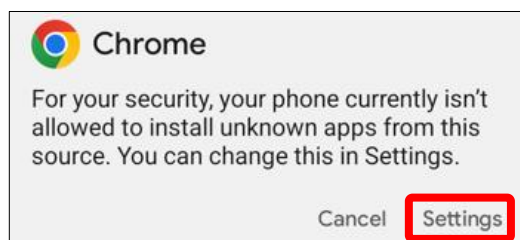


3. When the download is complete, tap Open.

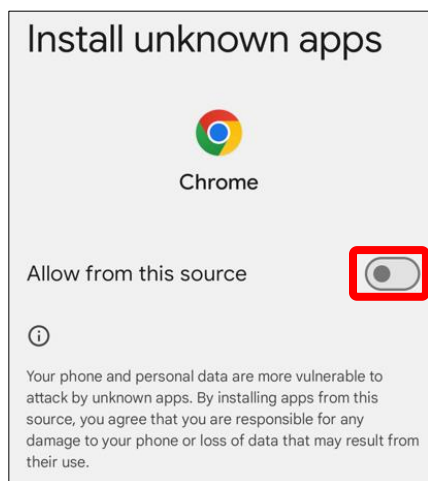


## 2. Installing the EPD Assistant Tool

4. If the following message appears, tap "Settings".



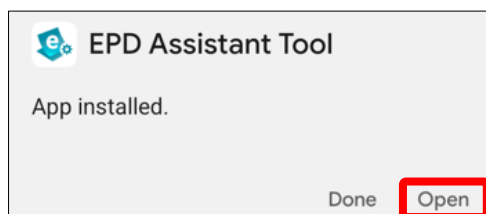
5. Enable "Allow from this source" on the unknown apps installation screen. Tap "← Install Unknown Apps" to return to the previous screen.



6. Tap "Install" to start installing the application.



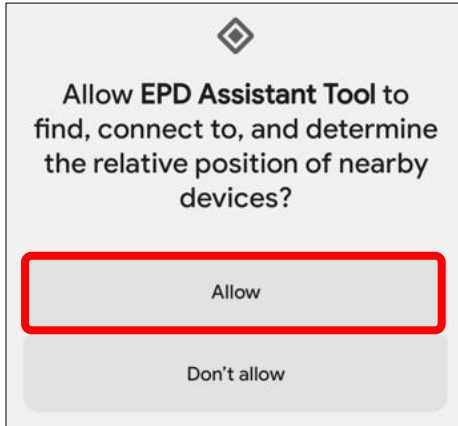
7. When the installation is complete, tap "Open" to launch the application.



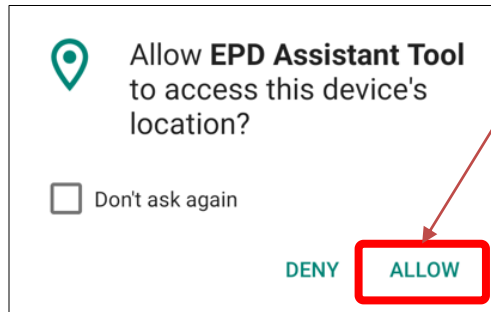
## 2. Installing the EPD Assistant Tool

8. The following message will be displayed, please tap Allow.  
The setting screen differs depending on the Android version.  
Please note that in the case of Android 11, you will not be able to search for Bluetooth devices unless you allow access to your location. If you select "Do not allow", see "4. Other" to change permissions.

For Android 12/13



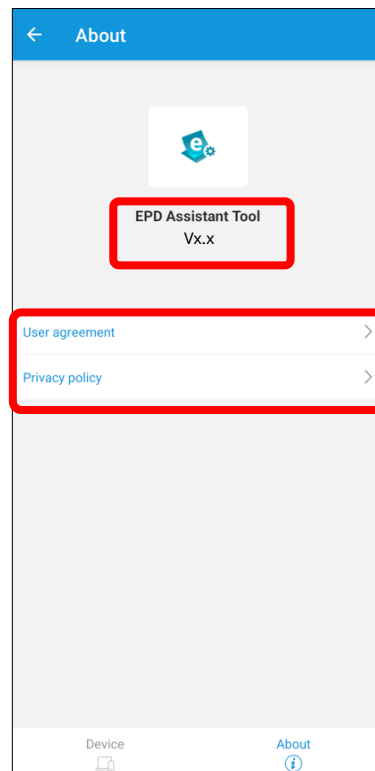
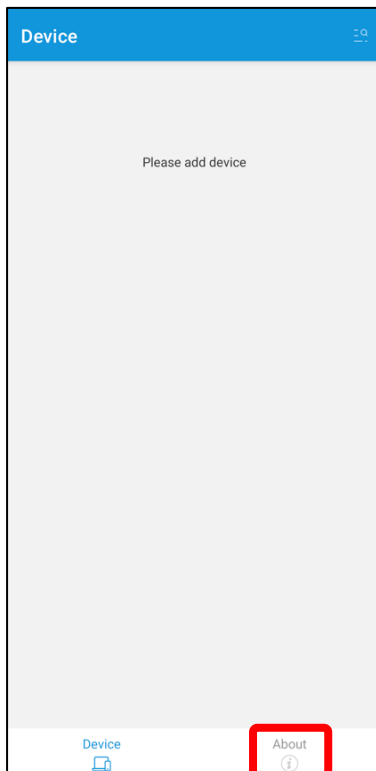
For Android 11



Select "Only when using the app" or "Only this time".  
If you select "Only this time", this message will be displayed the next time you start the app.

### 2.2 View app information

Tap "About" to view the app version, terms of use, and privacy policy.

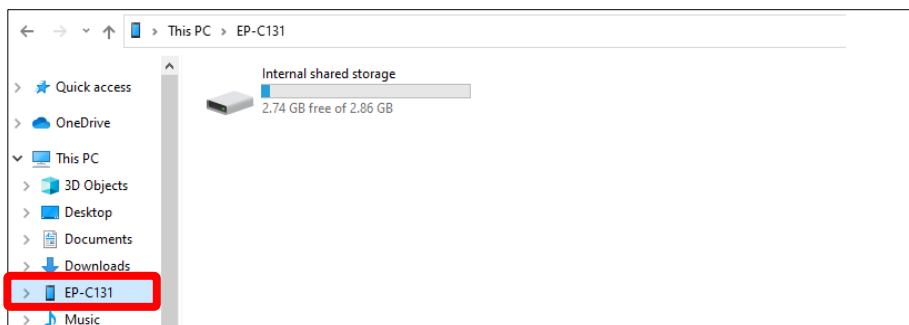


# 3. How to enable Bluetooth on the main unit

At the time of purchase, Bluetooth is disabled on the ePaper itself, so use the ePaper Settings Tool to enable Bluetooth.

For details on downloading the ePaper Settings Tool, refer to the instruction manual of the ePaper.

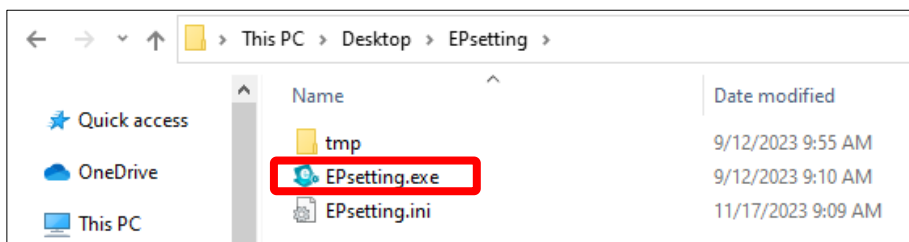
1. Connect the ePaper to the PC with a USB cable, and confirm that the model name is displayed on the explorer.



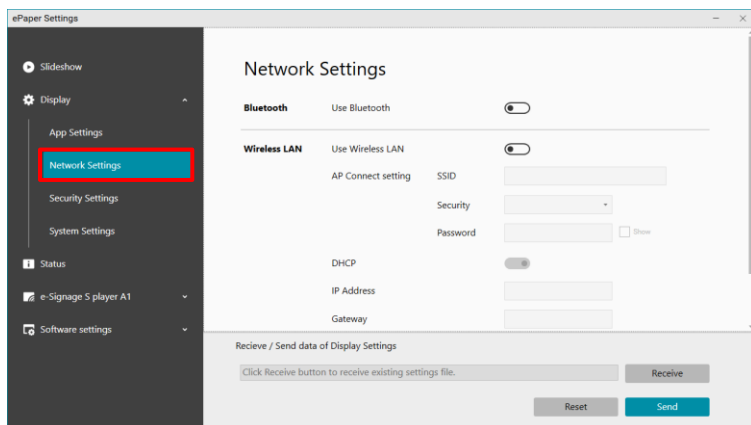
If the model name is not displayed, make sure that the power supply of the ePaper main unit is connected, and then connect the USB cable again.

If the ePaper is operating in power-saving mode, you cannot check the version when it is in power-saving mode. In this case, press the power button to wake up from the power-saving state and connect the USB cable.

2. Double-click "EPsetting.exe" to launch the ePaper Settings Tool.



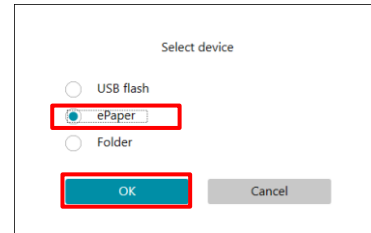
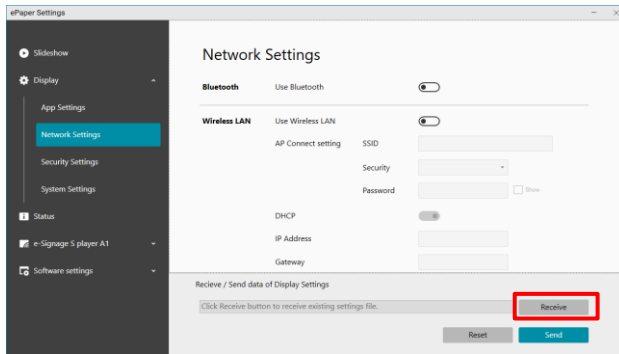
3. Click "Display" - "Network Settings".



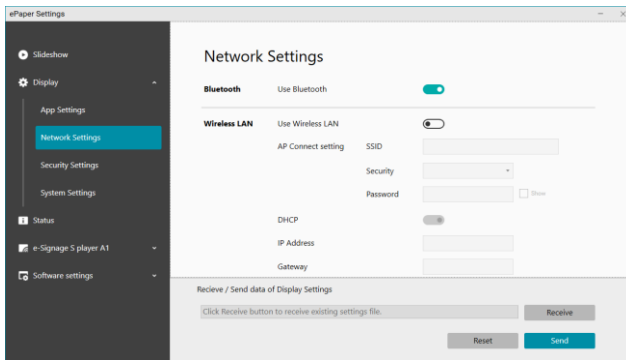


# 3. How to enable Bluetooth on the main unit

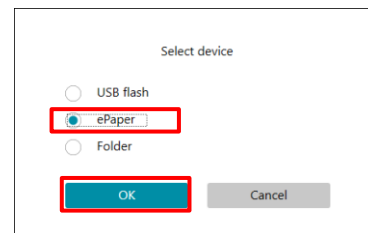
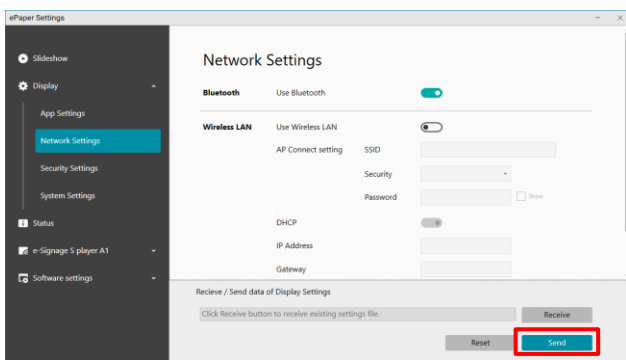
- Click the "Receive" button, select "ePaper", and click the "OK" button. The settings of the current terminal are reflected in the ePaper Settings Tool.



- Enable the "Use Bluetooth" setting. If it is already enabled, you do not need to perform any further actions in this procedure.



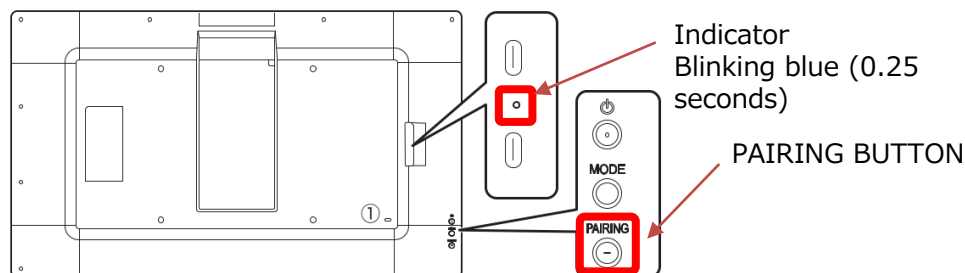
- Click the "Write" button, select "ePaper" and click the "OK" button. The Bluetooth setting value is reflected in the ePaper main unit.



# 4. Using the EPD Assistant Tool

## 3.1 Pairing

1. Press the PAIRING button on the ePaper unit.  
Bluetooth is turned on and the indicator flashes blue (0.25 seconds).  
After 5 minutes, the pairing status will be canceled.

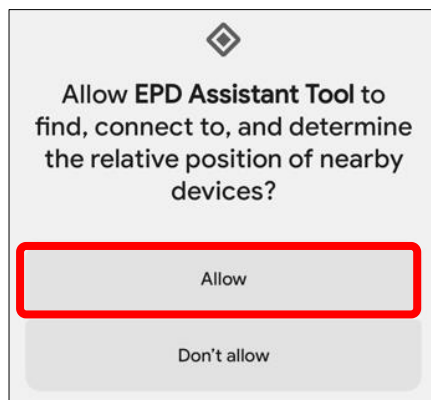


2. Launch the EPD Assistant Tool app on your mobile device.  
Tap the icon below.

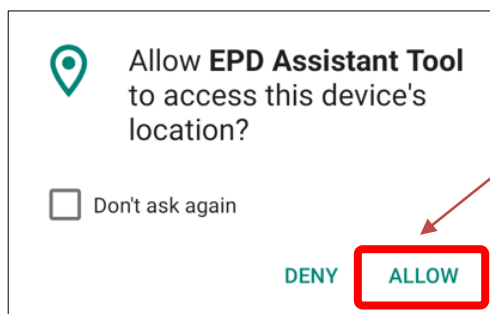


3. When starting for the first time, the following message will be displayed, so tap Allow.  
The setting screen differs depending on the Android version.  
Please note that in the case of Android 11, you will not be able to search for Bluetooth devices unless you allow access to your location. If you select "Do not allow", see "4. Other" to change permissions.

For Andorid 12/13

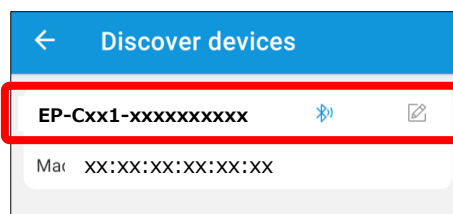


For Andorid 11



Select "Only when using the app" or "Only this time".  
If you select "Only this time", this message will be displayed next time you start the app.

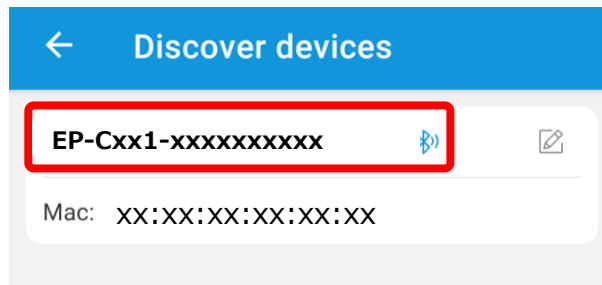
4. Tap the icon in the upper right corner to search for your device (ePaper itself).  
When an available device is detected, the device name and Mac address are displayed.



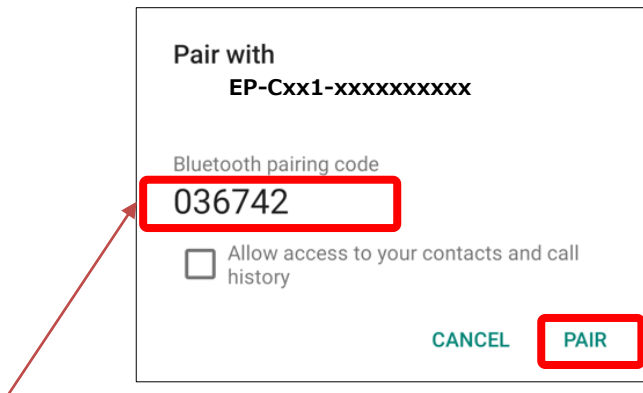
※ The device name is Product Name-Serial Number.  
ex : EP-C131-xxxxxxxxxx

## 4. Using the EPD Assistant Tool

5. Tap the device you want to connect via Bluetooth.

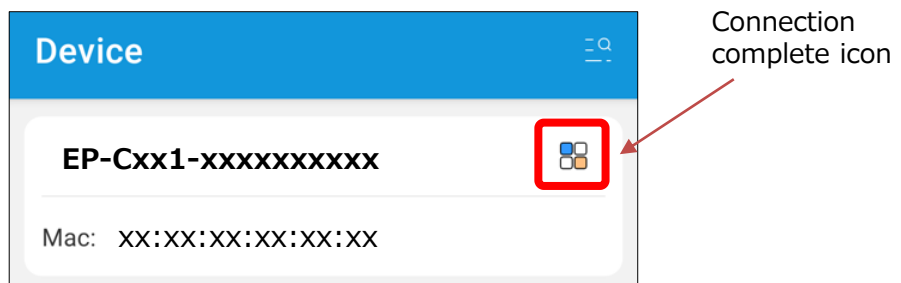


6. If you are a new device, the pairing dialog will be displayed, tap "Pair". If the device is already paired, it will not be displayed.



- ※ The Bluetooth pairing code is automatically assigned between the mobile device and the ePaper, so there is no need to set it.

7. When pairing is complete, the icon on the right will display the connection completion icon.

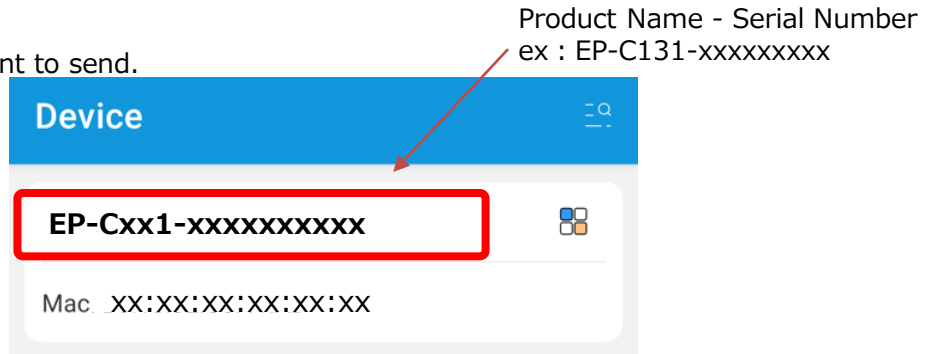


# 4. Using the EPD Assistant Tool

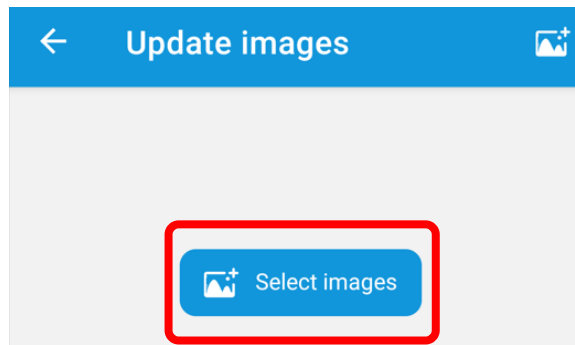
## 3.2 Sending Images

Make sure that the indicator on the ePaper unit is flashing blue (0.25 seconds).  
If the indicator is not flashing, press the PAIRING button.

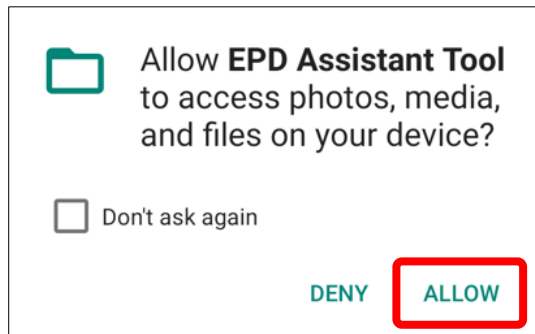
1. Tap the device you want to send.



2. Tap Select Image.

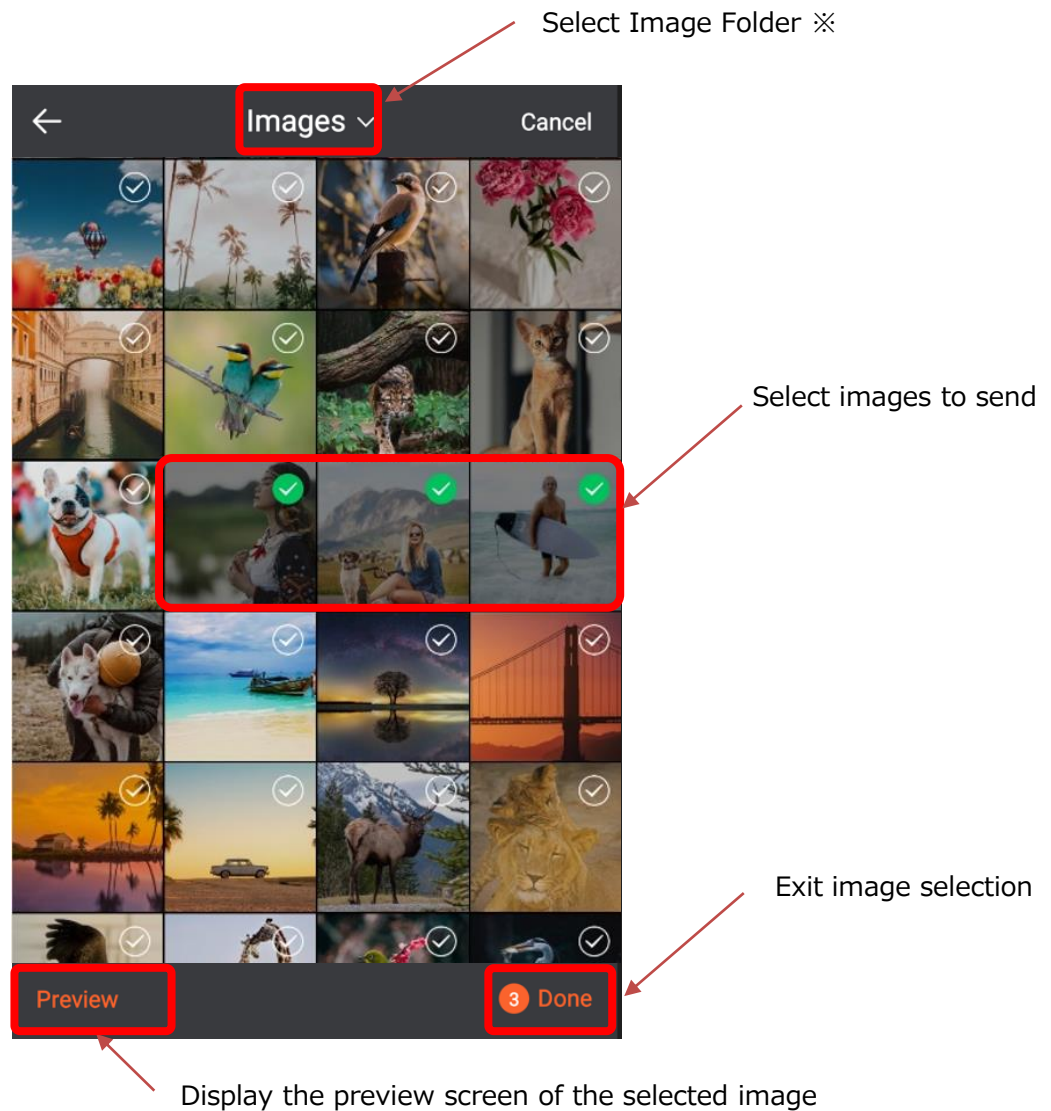


3. When starting for the first time, the following message will be displayed, so tap "Allow".  
If you tap "Don't Allow", you won't be able to send, so click "4. Others" and change the setting to "Allow".



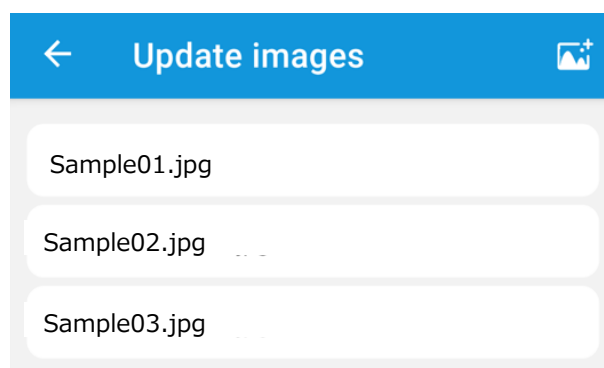
## 4. Using the EPD Assistant Tool

4. Tap to select the image you want to send.



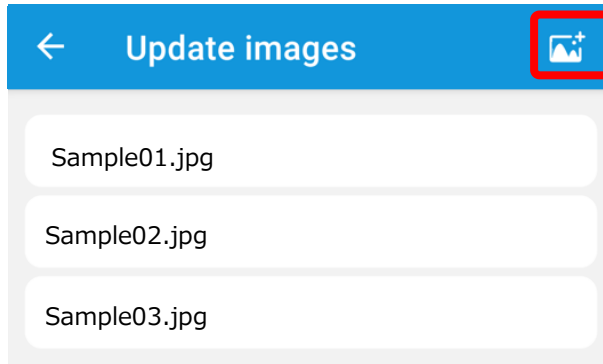
\* The images to be sent are those stored on the device where the app is installed.  
Cloud storage, etc. cannot be specified.

5. Tap "Finish" to display the file name of the image you want to send.

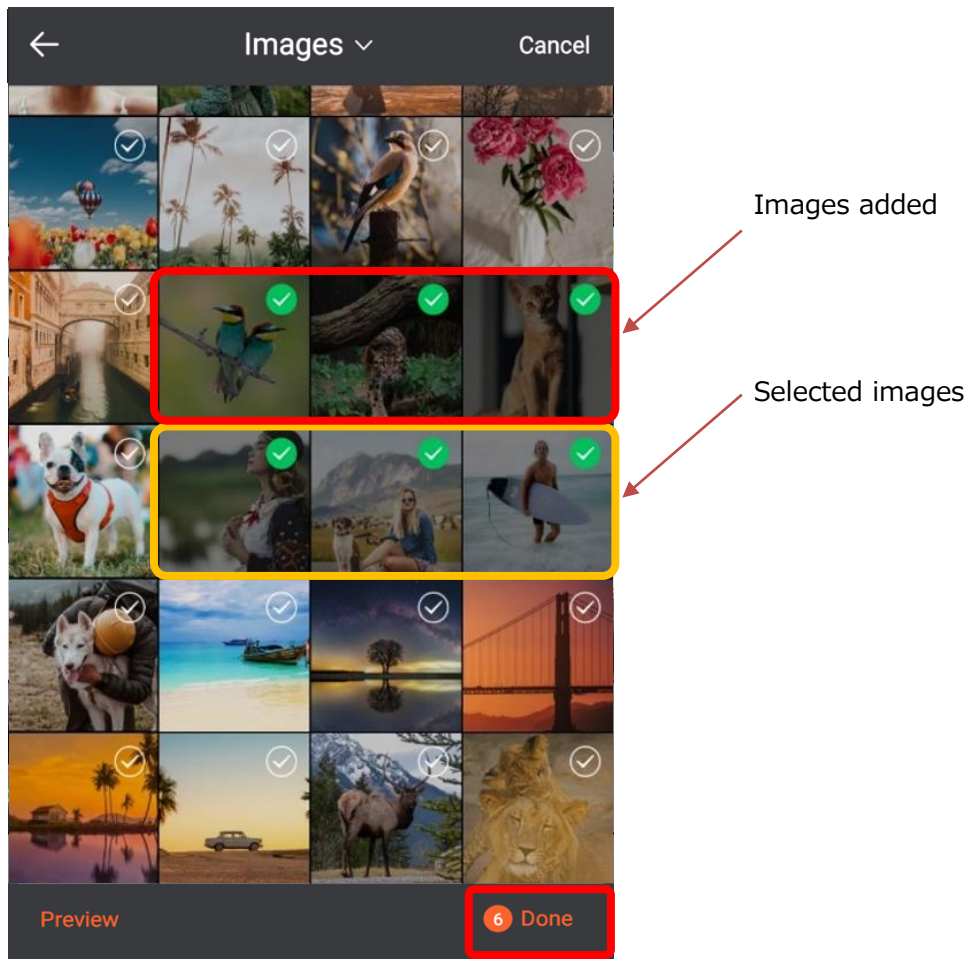


## 4. Using the EPD Assistant Tool

6. To add or remove images to send, tap the icon in the upper right corner of the screen.

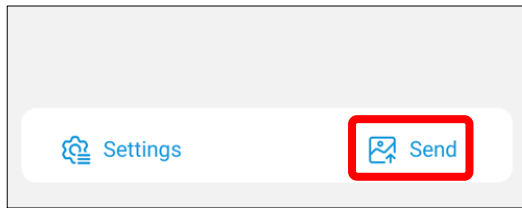


7. Select the images you want to add or delete, and then tap and press "Finish".

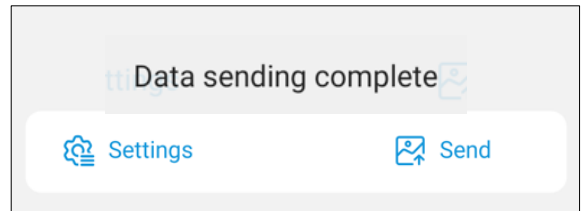
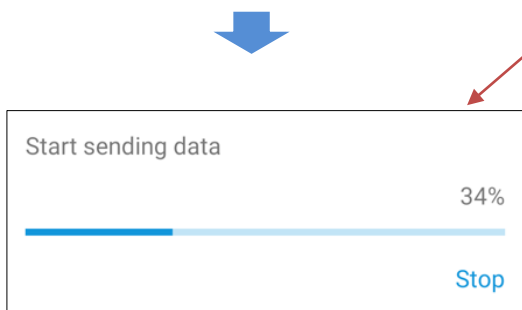


## 4. Using the EPD Assistant Tool

8. Tap "Send" to start sending the image.  
The display settings are inherited as they are set in the ePaper main unit.  
In addition, the sent images are displayed sorted by file name.



When the transmission starts the indicator  
Stopped flashing blue (0.25 seconds)



- \* The image displayed on this monitor will be replaced with the new image you sent.
- \* Do not disconnect the power cable connected to the ePaper while writing data.  
If an error message such as "Image damaged" is displayed, please try sending again.

If the message "Transmission failed, please turn on Bluetooth" is displayed, an error may have occurred during communication, so please try sending again near the ePaper itself. If you see the same message and can't send, the Bluetooth of the ePaper may be disabled. 3.1 Follow the steps in Bluetooth settings and make sure Bluetooth is enabled.

# 4. Using the EPD Assistant Tool

## 3.3 Change settings

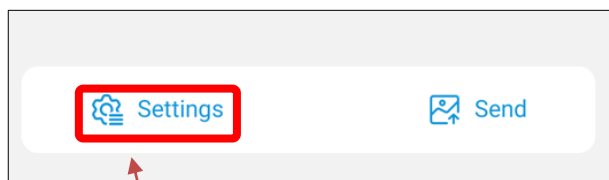
You can set how the selected image is displayed.  
The sent images are displayed in the order selected when selecting the images.

The contents that can be set are as follows.

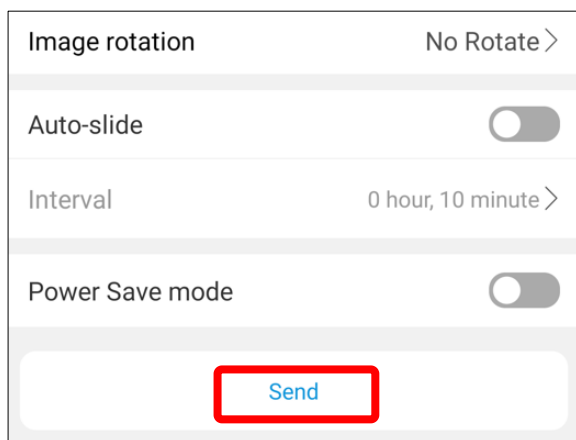
Setting items	Contents
Image rotation direction	Specifies the orientation of the image. For example, when installed vertically, if the displayed image data is in vertical format, use 90-degree rotation to display it correctly.
Automatic screen switching	There are manual and auto modes for image display. Off: Manual mode Press the MODE button on the main unit to display the following image. On: Auto Mode Automatically display the following image:
Screen switching interval	Specify the image switching interval in auto mode. The screen switching interval cannot be set to less than 10 minutes.
Power saving mode	If checked, the display will be changed and then the power saving state will be shifted. In manual mode : After the display change is completed, it will transition to the power-saving state. In auto mode : According to the screen switching interval setting, the system transitions to and returns to the power-saving state. Press the power button to resume the power-saving state. *When an image is sent, the system automatically recovers from the power-saving state.

\* For details of each setting, refer to the slide setting in the ePaper Setting Tool Operation Manual.

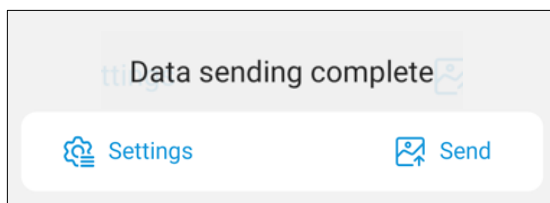
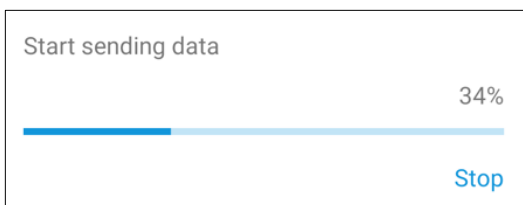
If you want to change how images are displayed, tap Settings.



You can only tap when an image is selected. If no image is selected, you can't tap it.



2. Tap "Send" to transfer the image to your device.





# 4. Using the EPD Assistant Tool

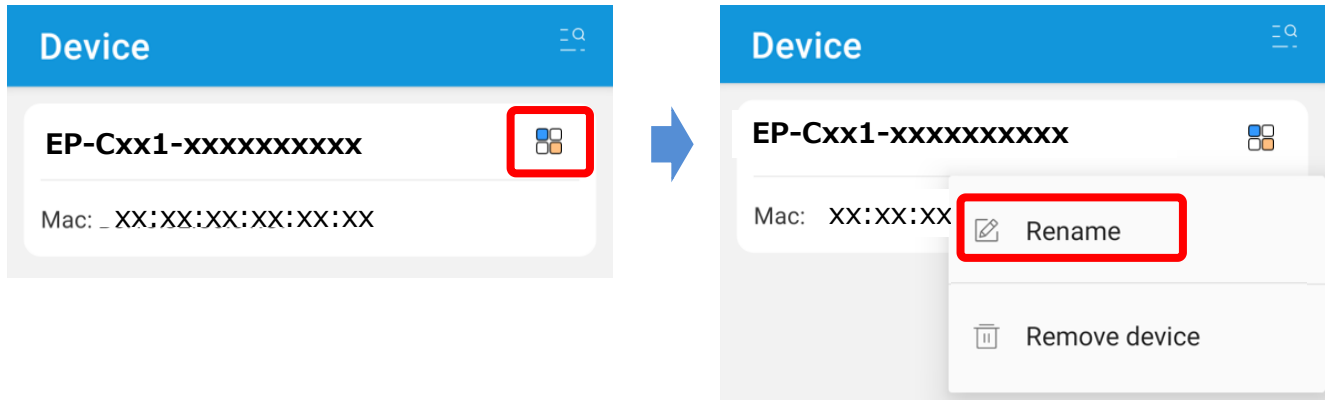
## 3.4 Name change

You can change the name that appears in the device list to any name.

\* The name will be used only in the changed mobile device.

The Bluetooth name of the ePaper unit will not be changed.

1. Tap the edit icon and select Rename.



2. Enter the name you want to change and tap Confirm.

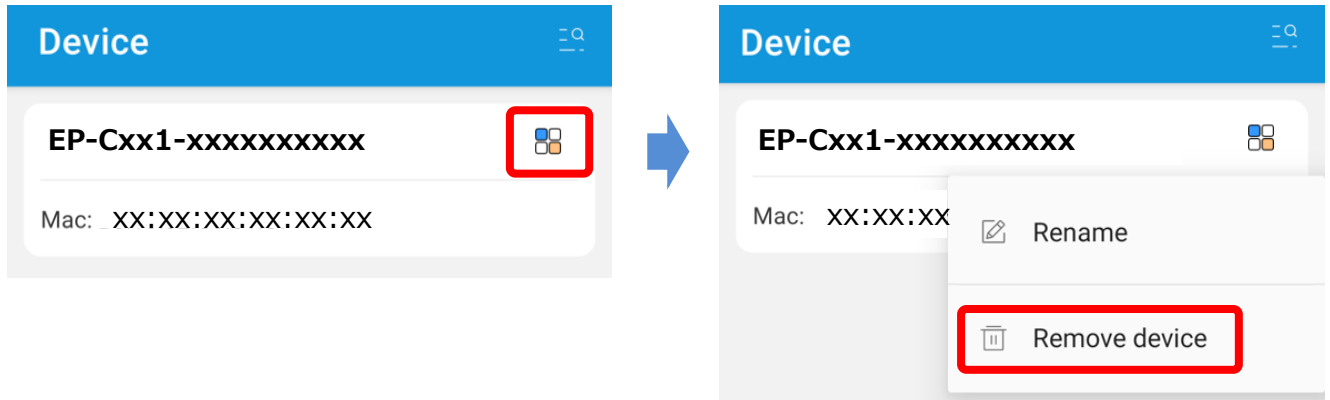


## 4. Using the EPD Assistant Tool

### 3.5 Removing a Device

You can delete a device that appears in the device list. If you delete it, you will need to pair it again the next time you connect.

1. Tap the edit icon and select "Delete Device".



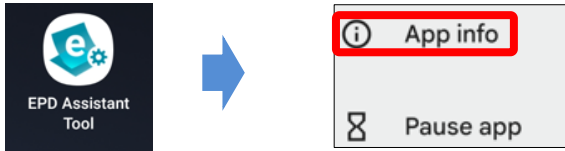
2. The device is removed from the device list.

# 5. Other

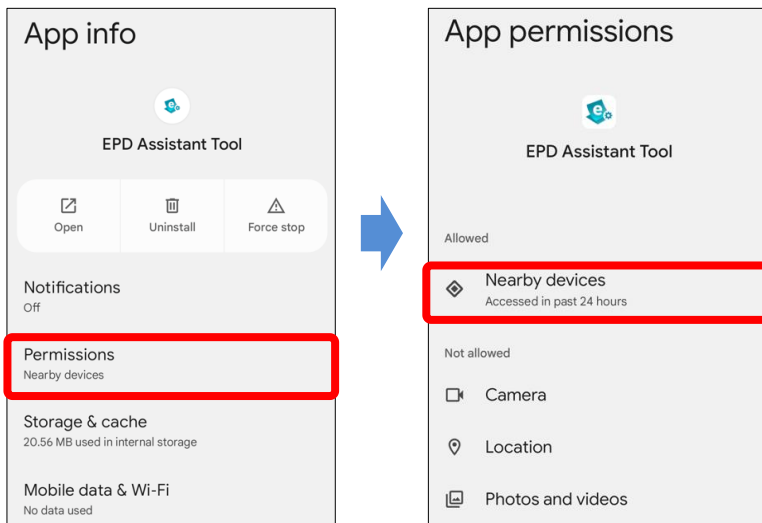
## 4.1 How to change permissions for nearby devices (for Andorid 12/13)

If you selected "Don't allow" in the permission settings of nearby devices, follow the steps below to enable it. Please note that the operation method may differ depending on the Android version and the home app you are using.

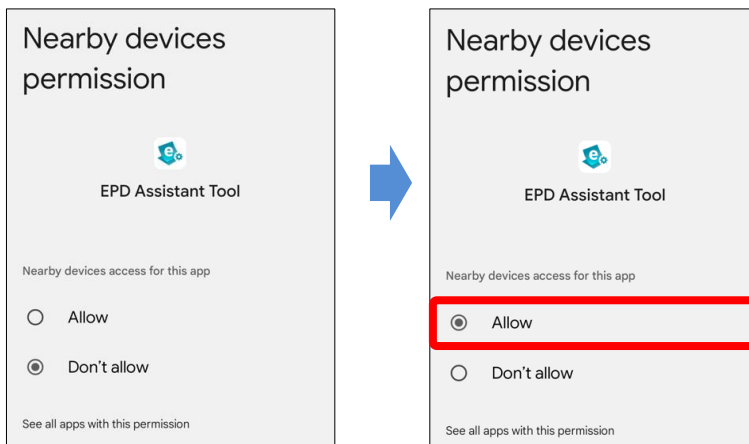
1. Touch and hold the app icon and tap App Info.



2. From Permissions, tap Nearby Devices.



3. Set the permissions of nearby devices to Allow.

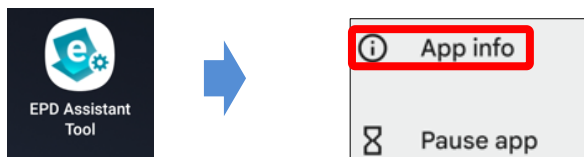


# 5. Other

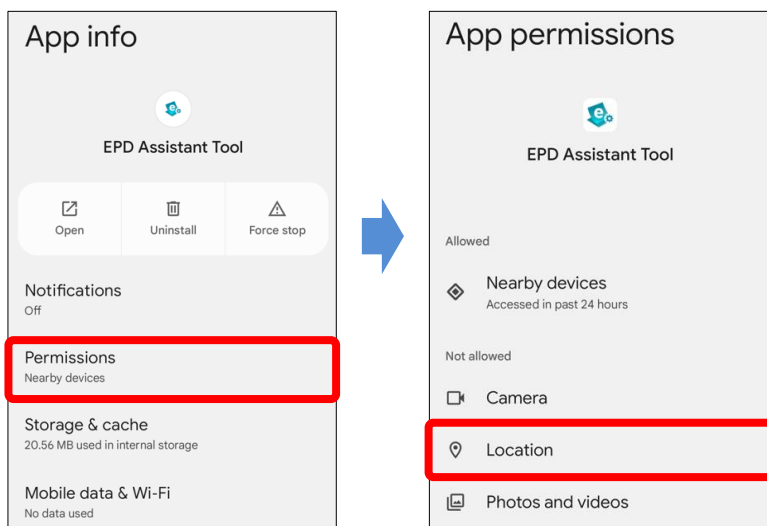
## 4.2 How to change location permissions (Android 11)

If you selected "Don't allow" for location access, follow the steps below to enable it. Please note that the operation method may differ depending on the Android version and the home app you are using.

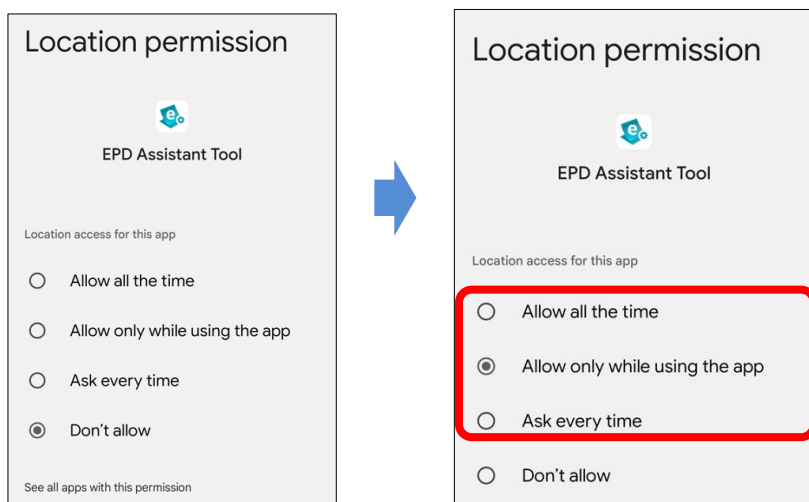
1. Touch and hold the app icon and tap App Info.



2. From App Permissions, tap Location.



3. Set the location permission to something other than "Never".

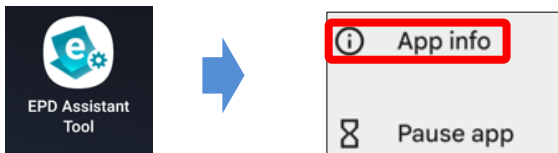


# 5. Other

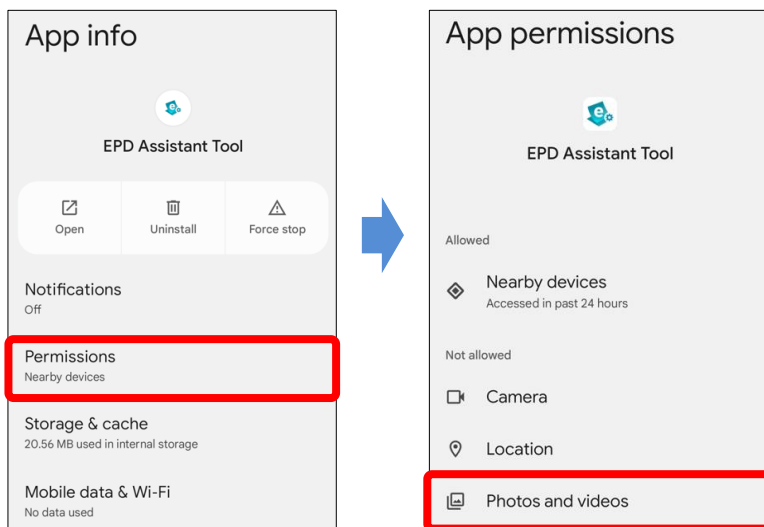
## 4.3 How to change access to photos and media on your device (Android 11/12/13)

If you selected "Don't Allow" to access photos and media on your device, follow these steps to enable it. Please note that the operation screen may differ depending on the Android version and the home app you are using.

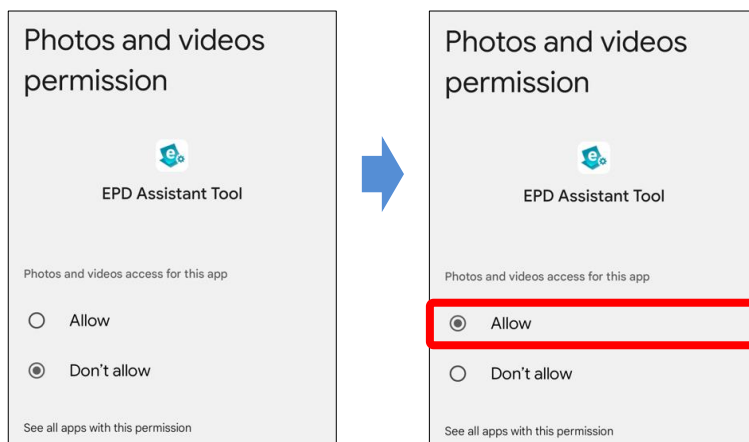
1. Touch and hold the app icon and tap App Info.



2. From App Permissions, tap Storage.



3. Set the storage permissions to Allow access to media only.



**SHARP**

SHARP CORPORATION