

Fujitsu recommends Windows 11 Pro.

Data Sheet

Fujitsu Notebook LIFEBOOK U7512

Ultra-Mobile Meets Ultra Secure

The Fujitsu LIFEBOOK U7512 is a modern slim & light notebook for business professionals. Based on the 12th generation Intel® Core™ processor, the 15.6-inch screen, light weight of 1.38 kg and an all-day battery runtime enable it to provide best portability. The outstanding security like PalmSecure™ makes the notebook to the perfect choice in today's modern workstyle.

Elegant design and enjoyable mobility

Manage your workday with premium notebooks providing ultimate convenience to maximize your productivity

- The remarkably slim 19.1 mm ultra-mobile notebook weighs only 1.38 kg.
- Enjoy the Intel® Iris® Xe Graphics with a FHD display.
- The outdoor-friendly anti-glare FHD touch panel comes with a narrow bezel design and complete magnesium warm silver housing.

Excellent security

Enhance your security with outstanding features to best protect your notebook and company data

- Integrated PalmSecure™ or fingerprint sensor
- Infrared Camera: Allows face recognition with Windows Hello
- Built-in Privacy Camera Shutter: Protecting your privacy
- SmartCard reader

Premium connectivity

Stay flexible and productive within a modern workplace environment

- Compact and versatile Intel® Thunderbolt™ 4 USB Type-C connector to charge your laptop, transfer files at fast speeds, connect external monitors and other peripherals
- Full set of interfaces with full-size LAN connector and HDMI
- Embedded 4G or 5G/LTE

Convenient upgradeability

Direct access to key components reduces upgrade time and costs

- Battery, memory and internal storage can be changed easily

Family concept

Reduce your acquisition cost as well as the complexity of your IT equipment

- Family port replicator for the whole LIFEBOOK E5 and U7 Series ensures ultimate flexibility and shared workplace concepts
- Shared components such as the USB Type-C port replicator, USB Type-C AC Adapter, BIOS and Bit Image across the ultra-mobile LIFEBOOK U7 family



Components

| | |
|---|---|
| Base unit | LIFEBOOK U7512 |
| Operating systems | |
| Operating system pre-installed | Windows 11 Pro. Fujitsu recommends Windows 11 Pro for business. Windows 11 Home Windows 10 Pro. Fujitsu recommends Windows 11 Pro for business. |
| Microsoft OS support information | After the end of the product life Fujitsu will continue to test and support all upcoming Windows releases for a period of maximum 5 years, depending on the available extension of hardware services through Fujitsu Warranty top ups. For details please see "Fujitsu Service Statement for Windows General Availability Channel" at https://support.ts.fujitsu.com/IndexProdSupport.asp?lng=com&OpenTab= |
| Operating system notes | The use of Windows Operating System is subject to acceptance of the End User License Agreement of Microsoft as applicable under the relevant Microsoft program. |
| Processor | |
| | Intel® Core™ i7-1270P processor (12C, up to 4.8 GHz) Intel® Core™ i7-1255U processor (10C, up to 4.7 GHz) * Intel® Core™ i5-1250P processor (12C, up to 4.4 GHz) Intel® Core™ i5-1245U processor (10C, up to 4.4 GHz) Intel® Core™ i5-1240P processor (12C, up to 4.4 GHz) * Intel® Core™ i5-1235U processor (10C, up to 4.4 GHz) * Intel® Core™ i3-1215U processor (up to 4.4 GHz) * |
| | *Processor only for retail, SMB, education and government |
| Memory modules | |
| | 4 GB (1 module(s) 4 GB) DDR4, 3,200 MT/s, SO DIMM 8 GB (1 module(s) 8 GB) DDR4, 3,200 MT/s, SO DIMM 16 GB (1 module(s) 16 GB) DDR4, 3,200 MT/s, SO DIMM 32 GB (1 module(s) 32 GB) DDR4, 3,200 MT/s, SO DIMM |
| Hard disk drives (internal) | |
| | PCIe-SSD, 512 GB M.2 NVMe module, SED PCIe-SSD, 256 GB M.2 NVMe module, SED PCIe-SSD, 2 TB M.2 NVMe module, SED PCIe-SSD, 1 TB M.2 NVMe module, SED |
| Hard disk notes | Accessible capacity may vary, also depending on used software. |
| Interface add on cards/components (optional) | |
| 4G/5G (optional) | Fibocom FM350-GL (5G Sub-6/cat.19) (Downlink speed 5G - 3740 MB/s, 4G - 1600 MB/s, Uplink speed 5G - 835 MB/s, 4G - 211 MB/s) Quectel EM120R-GL (4G Cat.12) (Downlink speed 600 MB/s, Uplink speed 150 MB/s) |
| Display | |
| | 39.6 cm (15.6-inch), IPS, FHD, 1,920 x 1,080 pixel, Anti-glare multi-touch, 250 cd/m ² (Touch), 700:1 (Touch) 39.6 cm (15.6-inch), IPS, FHD, 1,920 x 1,080 pixel, Anti-glare HDR, 500 cd/m ² (FHD), 800:1 (FHD) 39.6 cm (15.6-inch), IPS, FHD, 1,920 x 1,080 pixel, Anti-glare display, 300 cd/m ² (FHD), 1000:1 (FHD) |
| Multimedia | |
| Camera | Built-in webcam (HD) with Status LED Built-in Infrared webcam (HD) with Status LED |
| Camera notes | 720p, 1 megapixels, 1280 x 720, with Privacy Camera Shutter |
| Microphone | dual digital array microphone |

Base unit

| | |
|-----------|----------------|
| Base unit | LIFEBOOK U7512 |
|-----------|----------------|

General system information

| | |
|-------------------------------|--|
| Chipset | Integrated |
| Supported capacity RAM (min.) | 4 GB |
| Supported capacity RAM (max.) | 64 GB |
| Memory slots | 2 SO DIMM (DDR4, 3200 MHz) |
| Memory notes | Dual channel support |
| LAN | 10/100/1,000 MBit/s Intel® I219LM |
| Integrated WLAN | Intel WiFi 6E AX211 - WLAN, BT, SRD cat. 2 |
| BIOS version | UEFI Specification 2.8 |
| BIOS features | InsydeH2O BIOS |
| Audio type | On board |
| Audio codec | Realtek ALC257 |
| Audio features | 2x built-in speakers (2 W each), Stereo audio |
| MIL-STD tested | Yes, selected MIL-STD-810H tests passed. MIL-STD-810H test results are not a guarantee of future performance under identified test conditions. Accidental damage is not covered under standard international limited warranty. |
| Color | Warm Silver |
| Material | Magnesium |

Graphics

| | |
|---------------------|---|
| Base unit | LIFEBOOK U7512 |
| Graphics brand name | Intel® UHD Graphics (with Single channel memory), Intel® Iris® Xe Graphics (with Dual channel memory) |
| Graphics notes | Shared memory depending on main memory size and operating system |

Interfaces

| | |
|---------------------------------------|--|
| Audio: line-in / line-out | 1 |
| Internal microphones | 2x digital array microphones (optional) |
| USB 3.2 Gen1 (5 Gbps) total | 3x Type-A (1 with Anytime USB charge functionality) |
| USB 4.0 Gen3 (20 Gbps) total | 2x Type-C Intel® Thunderbolt™ 4 (40 Gbps), Power Delivery (15W), DP out |
| HDMI | 1 - Supports 4k@60Hz as specified in HDMI 2.0b |
| Ethernet (RJ-45) | 1 (with status LED) |
| Memory card slots | 1 microSD 3.0 Standard microSD card microSDHC card microSDXC card Speed Class: up to UHS-I |
| SmartCard slot | 1 (optional) |
| SIM card slot | 1 (Nano-SIM, only for models with configuration WWAN ready or with 4G/5G LTE modules) |
| eSIM card | eSIM integrated in 4G/5G LTE Module - Dual SIM (DSSA) supported |
| Docking connector for Port Replicator | 1 - PR Model: NPR50 |
| Kensington Lock support | 1 - Recommendation: Kensington's Micro Security Saver |

Port Replicator interfaces (optional)

| | USB Type-C PR | Thunderbolt™ 4 PR | Mechanical PR Model: NPR50 |
|-----------------------------|--------------------------------|--------------------------------|-------------------------------|
| DC-in | 1 (19V/90W required) | 1 (20V/170W required) | 1 (19V/90W required) |
| Power on switch | 1 | 1 | 1 |
| Audio: line-in / line-out | --- | --- | 1 |
| Audio: comments | 1 Combo jack for headset usage | 1 Combo jack for headset usage | Combo-Port |
| USB 3.2 Gen1 (5 Gbps) total | --- | --- | 4x Type-A 2x Type-C |
| DisplayPort | 1x V1.2 | 2x V1.4++ | 2 (up to 2x 3840x2160 60Hz) |
| VGA | 1 | --- | 1 (up to 1920x1200 6Hz) |
| HDMI text | 1 | V 2.0b | 1 (up to 4096x2160 60Hz) |

Port Replicator interfaces (optional)

| | | | |
|-------------------------|--|--|---|
| Interface Notes | 3x Type-A - 5V/0.9A, 4.5W 1x Type-C - 15W 1x Type-C - Up to 60 W (PD v2.0-1.1) power output to client or 4.5W input | 2x Type-A - 5V/0.9A, 4.5W 1x Type-A - 5V/2.4A, 12W 2x Type-C - 5V, 1.5A/4.5W charging port 1x Type-C - TBT4 up to 60 W (PD v2.0-1.1), 5-20V/3.0A upstream (PC), Intel AMT support (vPRO) 1x Type-C - TBT4 up to 15 W (PD v2.0-1.1), 5V/3.0A downstream, power output to client | The shown up to resolutions are maximum values each port and will be different depending on Multi-Display combinations. |
| Kensington Lock support | no | 1 | 1 (lock Portrep only) |
| Ethernet (RJ-45) | 1 | 1 (10/100/1000 Mbit/s, 2,5 Gbps) | 1 |
| Notes | Number of simultaneous used displays and its possible resolutions and frequencies depend on mobile system and display interface type. Please consult always also the manual of the connected client. | | 1 RJ45 (10/100/1000) |

Keyboard and pointing devices

Spill-resistant keyboard with number block, Available with standard keyboard or backlit keyboard
 Number of keyboard keys: 106, Keyboard pitch: 18.4 mm, Keyboard stroke: 1.7 mm
 Multi gesture touchpad with two mouse buttons

Wireless technologies

| | |
|------------------------|---|
| Antennas | 2 Dual band WLAN antennas, 2+2 4G/5G antennas optional |
| Bluetooth | v5.2 |
| Integrated WLAN | Intel WiFi 6E AX211 - WLAN, BT, SRD cat. 2 |
| WLAN encryption | WPA/WPA2/WPA3 (Wi-Fi Protected Access) |
| WLAN notes | WiFi 6E is supported by Windows 11 OS only - Windows 10 OS supports WiFi 6 only. #Import and usage according to country-specific regulations. |
| Integrated LTE or UMTS | (5G) LTE Fibocom FM350-GL (Sub-6/cat.19) - eSIM integrated - UMTS,LTE,5G (4G) LTE Quectel EM120R-GL (Cat.12) - eSIM integrated - UMTS,LTE |
| LTE/UMTS/GPS notes | Optional |
| NFC | No |
| GPS | Embedded in 4G/5G module if configured with WWAN |

Power supply

| | |
|---------------------|---|
| AC Adapter | 20 V / 65 W (3.25 A), 100 V - 240 V, 50 Hz - 60 Hz, 3-pin (grounded) Type-C AC-Adapter slim&light |
| AC Adapter | 20 V / 65 W (3.25 A), 100 V - 240 V, 50 Hz - 60 Hz, 3-pin (grounded) Type-C AC-Adapter standard |
| 1st battery | Lithium polymer battery 4-cell, 65 Wh, 4,280 mAh |
| Battery features | Quick Charge: 80% in 1h |
| Runtime 1st battery | tbc |

Noise emission

| | |
|----------------|-------------------------------------|
| Noise emission | Please refer to the Eco Declaration |
|----------------|-------------------------------------|

Dimensions / Weight / Environmental

| | |
|-------------------------------|---|
| Dimensions (W x D x H) | 357 x 230 x 19.1 mm 14.06 x 9.06 x 0.75 inch |
| Weight | starting from 1.38 kg |
| Weight (lbs) | starting from 3.04 lbs |
| Weight notes | Weight may vary depending on actual configuration |
| Operating ambient temperature | 5 - 35 °C (41 - 95 °F) |
| Operating relative humidity | 20 - 80 % |

Compliance

| | |
|---------|----------------|
| Product | LIFEBOOK U7512 |
| Model | 7U15A3 |
| Germany | GS (planned) |
| Europe | CE CB |

Compliance

| | |
|-----------------|---|
| USA/Canada | FCC (depending on configuration) (planned) |
| Global | TCO Certified 9.0 |
| Russia | EAC in progress |
| China | CCC (planned) |
| Compliance link | https://sp.ts.fujitsu.com/sites/certificates |

Additional Software

| | |
|------------------------------------|---|
| Additional software (preinstalled) | Fujitsu Plugfree Network (network management utility) Fujitsu Anytime USB Charge Utility Fujitsu Battery Utility Fujitsu Function Manager Fujitsu DeskUpdate (driver and utility tool) |
| Additional software (notes) | Use of additional software is subject to proactive acceptance of the respective End User License Agreement as applicable for the relevant software whether preinstalled or optional. This also applies for any available patches thereof. |

Manageability

| | |
|--------------------------|--|
| Manageability technology | Intel® vPro™ technology/iAMT (depending on processor) PXE Boot code Wake-on-LAN |
| Manageability software | DeskView Client DeskView Instant BIOS Management |
| Supported standards | WMI (Windows Management Instrumentation) PXE (Preboot Execution Environment) DMI (Desktop Management Interface) SMBIOS (System Management BIOS) CIM (Common Information Model) BootP (made4you) |
| Manageability link | http://www.fujitsu.com/fts/manageability |

Security

| | |
|--------------------------|--|
| Physical Security | Kensington Lock support |
| System and BIOS Security | User and supervisor BIOS password EraseDisk |
| User Security | Access protection via internal SmartCard reader (optional) Embedded fingerprint sensor (optional) Embedded PalmSecure® sensor (optional) Hard disk password |
| Security Notes | The security features included in the product alone cannot protect from any and all intrusion attempts and cyberattacks. For an adequate overall level of IT security, further IT security measures (e.g. supplementary virus scanner settings, firewall, access rights management, encryption etc.) must be adopted independently of the available system configuration options. Hence the overall IT security for the product is within the sole responsibility of the respective user/administrator of the product. |

Warranty

| | |
|-----------------------------|--|
| Warranty period | 2 years (for countries within EMEA) |
| Warranty type | Bring-in Service / Collect & Return Service (depending on country) |
| Warranty Terms & Conditions | http://www.fujitsu.com/warranty |
| Digital bug fixes | Subject to availability and following their generic release for the product, bug fixes and function-preserving patches for product-related software (firmware) can be downloaded from the technical support at: https://support.ts.fujitsu.com/ free of charge by entering the respective product serial number. For application software supplied together with the product, please directly refer to the support websites of the respective software manufacturer. |

Product Support Services - the perfect extension

| | |
|--------------------------|---|
| Recommended Service | 9x5, Onsite Response Time: Next Business Day |
| Spare Parts availability | 5 years after end of product life |
| Service Weblink | http://www.fujitsu.com/emeia/products/product-support-services/ |

Recommended Accessories

Thunderbolt™ 4 Port Replicator



First Thunderbolt™ Port Replicator on the market providing enhanced security and full support of Intel® AMT (vPro®).
The universal port can easily connect almost everything with a single cable and high speed-data transfer. This smart workspace solution keeps your desk clean and tidy.

Order Code:
FPCPR401BP

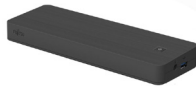
Port Replicator for LIFEBOOK U7x12, E5x12, U7411 and U7511



Flexibility, expandability, desktop replacement, investment protection – to name just a few benefits of Fujitsu's docking options.

Order Code:
FPCPR402BP

USB Type-C Port Replicator 2



Connect to your peripherals. Adapt to the task on demand. The universal USB Type-C interface supports you to get your peripheral devices connected easily. Multiply your USB ports to connect your peripherals as well as your external display via HDMI, DisplayPort or VGA.
You also can charge your external USB devices without the need of any additional charger.

Order Code:
S26391-F3327-L100

Battery 4 cell 65 Wh



The 4 cell 65 Wh battery has a the recharge time of the cell is 60 minutes for a 80% charge.

Order Code:
FPCBP592BP

More information

Fujitsu products, solutions & services

In addition to Fujitsu Notebook LIFEBOOK U7512, Fujitsu provides a range of platform solutions. They combine reliable Fujitsu products with the best in services, know-how and worldwide partnerships.

Fujitsu Portfolio

Build on industry standards, Fujitsu offers a full portfolio of IT hardware and software products, services, solutions and cloud offering, ranging from clients to datacenter solutions and includes the broad stack of Business Solutions, as well as the full stack of Cloud offering. This allows customers to leverage from alternative sourcing and delivery models to increase their business agility and to improve their IT operation's reliability.

Computing Products

www.fujitsu.com/global/products/computing/

Software

www.fujitsu.com/software/

More information

Learn more about Fujitsu Notebook LIFEBOOK U7512, please contact your Fujitsu sales representative or Fujitsu Business partner, or visit our website.

www.fujitsu.com/emeia/products/computing/pc/notebooks/index.html

Fujitsu green policy innovation

Fujitsu Green Policy Innovation is our worldwide project for reducing burdens on the environment.

Using our global know-how, we aim to contribute to the creation of a sustainable environment for future generations through IT.

Please find further information at <http://www.fujitsu.com/global/about/environment/>



Copyrights

All rights reserved, including intellectual property rights. Changes to technical data reserved. Delivery subject to availability. Designations may be trademarks and/or copyrights of the respective manufacturer, the use of which by third parties for their own purposes may infringe the rights of such owner. For further information see <http://www.fujitsu.com/emeia/resources/navigation/terms-of-use.html>
Copyright 2022 Fujitsu Technology Solutions GmbH

Disclaimer

Technical data are subject to modification and delivery subject to availability. Any liability that the data and illustrations are complete, actual or correct is excluded. Designations may be trademarks and/or copyrights of the respective manufacturer, the use of which by third parties for their own purposes may infringe the rights of such owner.

CONTACT

Fujitsu Technology Solutions GmbH
Website: www.fujitsu.com
2022-05-16 EM-EN

All rights reserved, including intellectual property rights. Changes to technical data reserved. Delivery subject to availability. Designations may be trademarks and/or copyrights of the respective manufacturer, the use of which by third parties for their own purposes may infringe the rights of such owner. For further information see <http://www.fujitsu.com/emeia/resources/navigation/terms-of-use.html>
Copyright 2022 Fujitsu Technology Solutions GmbH