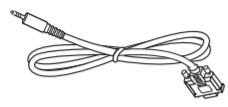


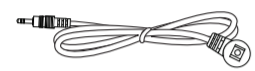
Power Cord



RS232



RS232 Daisy Chain Cable



IR Sensor Cable



Logo



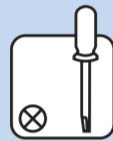
USB Cover x 1



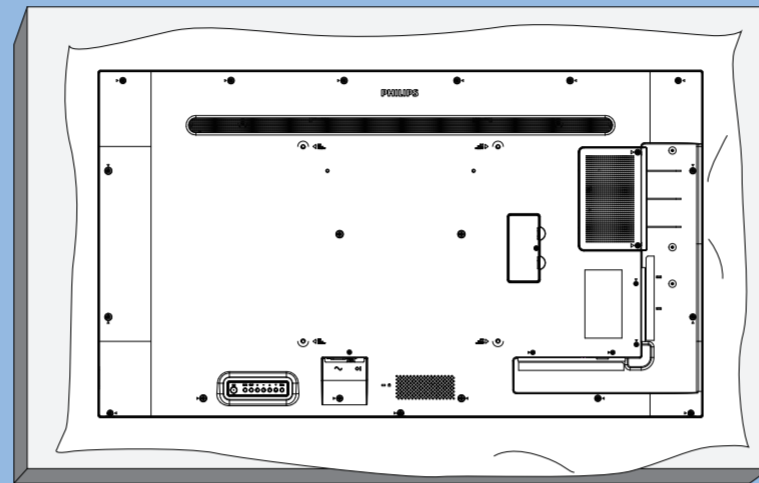
M3 Screw x 2

* Differences according to regions.

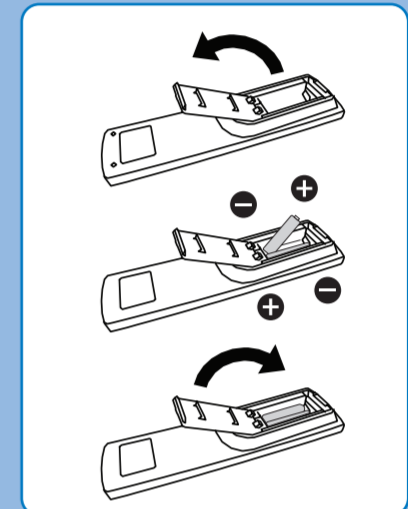
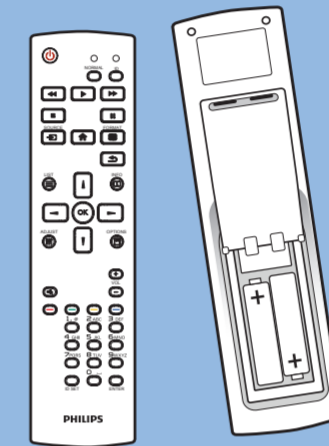
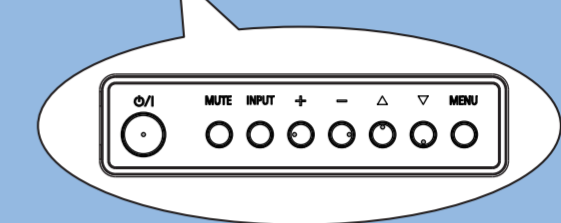
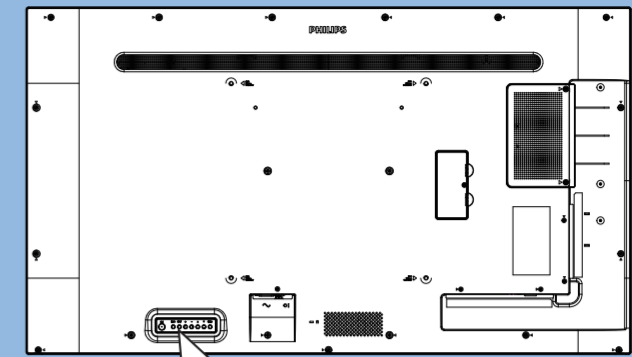
Display design and accessories may differ from those illustrated above.



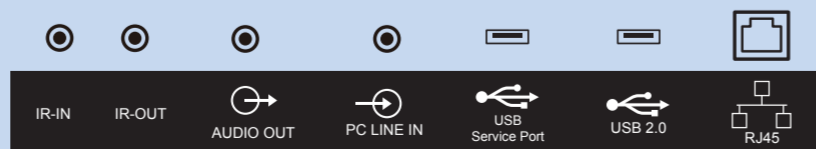
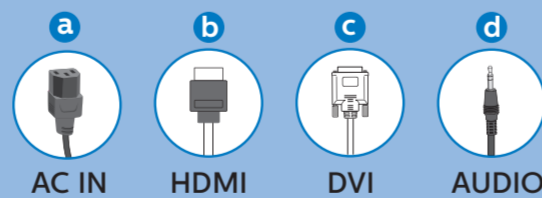
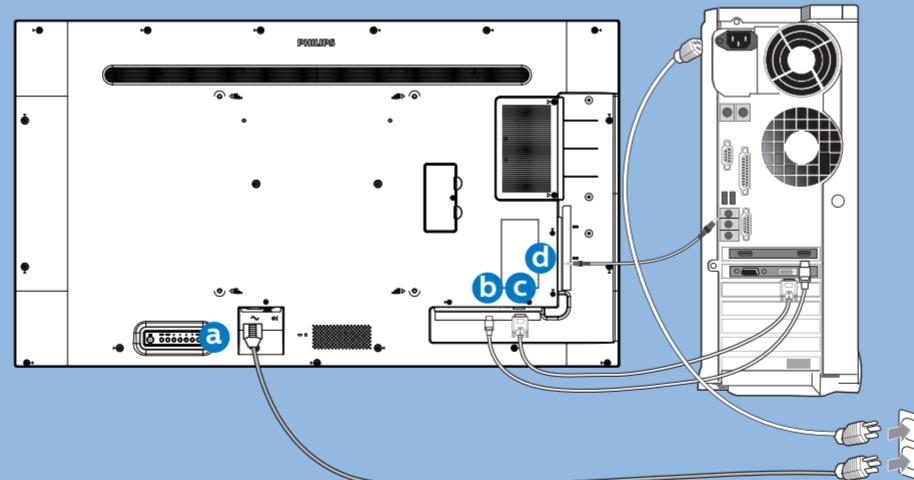
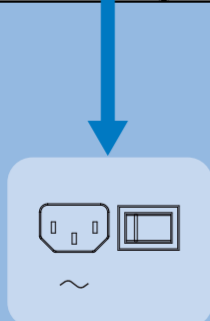
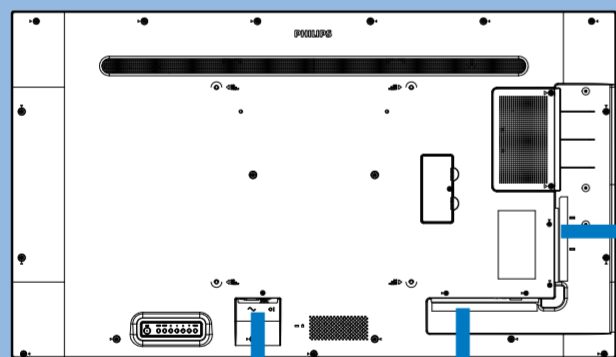
1



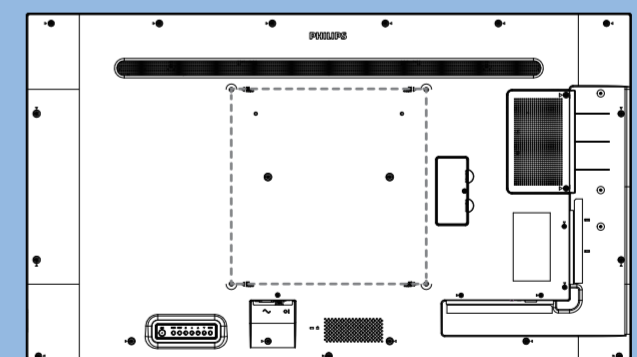
2



3



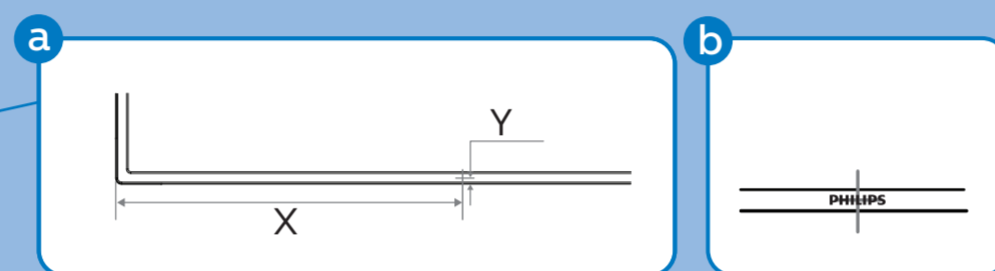
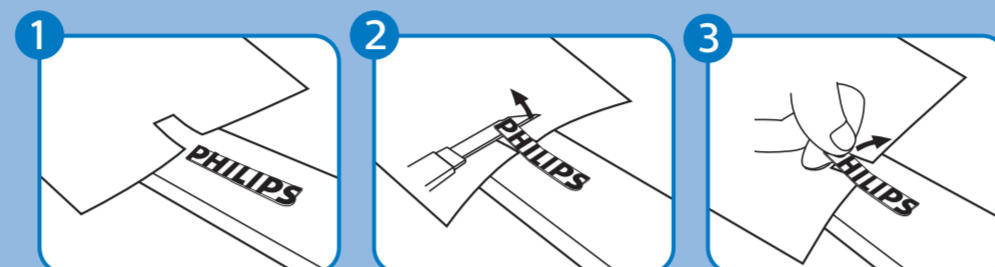
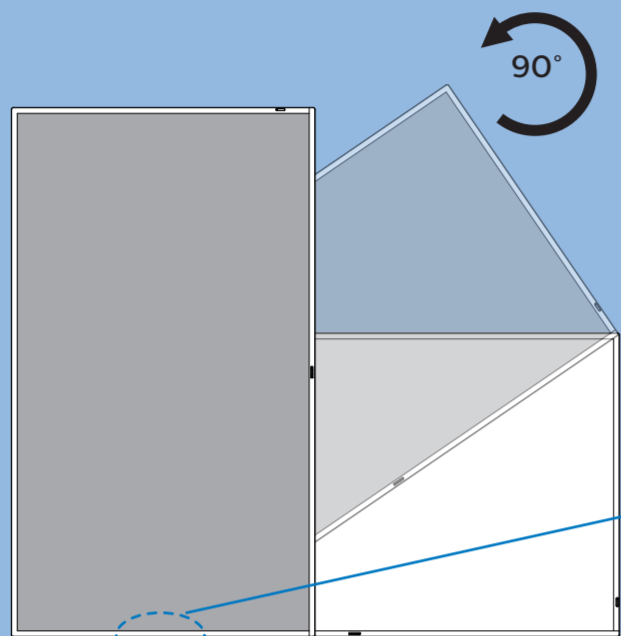
4



M6 * (10+X) mm
(X=Thickness of Wall mount BKT)

43BDL3510Q: 200mmx200mm
50BDL3510Q: 400mmx400mm
55BDL3510Q: 400mmx400mm

5



43BDL3510Q: X=280.6mm Y=7.4mm
 50BDL3510Q: X=324.5mm Y=7.9mm
 55BDL3510Q: X=356.3mm Y=7.4mm

PHILIPS

Professional Display Solutions

Q line

43BDL3510Q/50BDL3510Q
55BDL3510Q



Quick Start



Please check out the website below for more product information.
www.philips.com/signagesolutions-support



Envision Peripherals Inc.
 490 N McCarthy Blvd, Suite #120
 Milpitas, CA 95035
 USA

© 2020 Koninklijke Philips N.V. All rights reserved.
 Philips and the Philips Shield Emblem are registered
 trademarks of Koninklijke Philips N.V. and are used under
 license from Koninklijke Philips N.V.

Specifications are subject to change without notice.

Version: V1.00 2020-04-01



Q41G55M181361A