



## MX242W

### Your advantages

5  
YEARS WARRANTY

The EIZO RadiForce MX242W features a high-quality IPS LCD with a large display and 16:10 aspect ratio. The widescreen format of the 24" DICOM preset monitor enables the simultaneous display of two images or one image and the accompanying diagnosis. This allows the user to directly view everything at once. There's no need for annoying sheets of paper, which saves time. The optimal DICOM display curve is preset during production and guarantees undistorted greyscale tones in radiological images. As a result, the monitor meets requirements in accordance with quality control guidelines.

- ✓ 2.3 megapixel LCD monitor with LED backlight and automatic luminance control for reliably high and permanently stable brightness
- ✓ Grey tone rendering with DICOM characteristic curve
- ✓ Pallet with 68 billion colour tones for precise colour rendering up to 12 bit
- ✓ Calibration of white point and tone value characteristic
- ✓ Automatic control of the luminance distribution (Digital Uniformity Equalizer)
- ✓ Prepares for acceptance and constancy testing in accordance with DIN 6868-157 and quality assurance guidelines

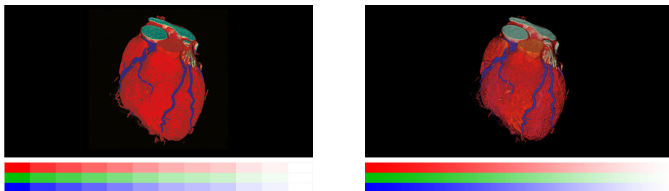
## Features

### Excellent image quality for the finest details

Thanks to the high 2.3 Megapixels (colour) resolution, a strong contrast ratio of 1000:1 and stable brightness of up to 350 cd/m<sup>2</sup>, the monitor offers excellent image quality. Even the differences between the finest details are shown – regardless of your viewing angle. This is a great advantage if multiple physicians are looking at the screen.

### One billion colour tones thanks to 13 bit LUT

Colour rendering is controlled by a 13 bit look-up table (LUT), up to 10 bits of which are available in the DisplayPort connection. This produces a resolution with a maximum of 1 billion colour tones. The rendering characteristic and fine structures required for diagnostics can therefore be precisely identified.



Without 13 bit LUT

With 13 bit LUT

### RadiCS LE

Brightness and DICOM<sup>®</sup> characteristic curve can be checked using the [RadiCS LE software](#) and automatically calibrated according to the factory default settings. The integrated sensor in the device takes care of this. The calibration of other tone value curves, such as CIE, is also possible with RadiCS LE.

### Consistently secure image quality

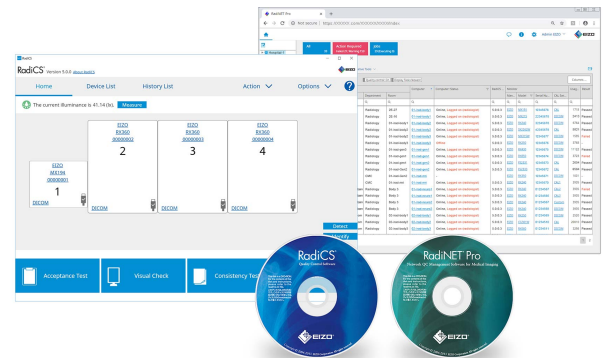
The optional EIZO RadiCS software to secure image quality enables extensive maintenance and testing of monitors and includes calibration, acceptance and constancy testing, and the archiving of all areas. If you are working on multiple stations, the use of the RadiNET Pro is recommended. This can be used to centrally control the calibration of all monitors, including data history. This saves you a significant amount of time and ensures consistently high image quality across the entire setup. The basic version RadiCS LE is already included with the RadiForce GX, RX, and MX/MS models.

[Learn more about the RadiCS application classes](#)

[Learn more about RadiCS LE software \(included in the delivery\)](#)

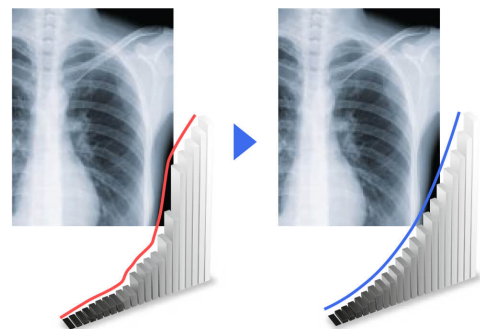
[Learn more about RadiCS software \(optionally available\)](#)

Learn more about RadiNET Pro software (optionally available)



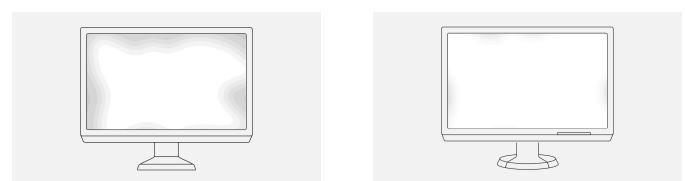
### Display of DICOM<sup>®</sup> characteristic at the press of a button

EIZO measures and adjusts each tone of grey carefully so that the monitors comply with the DICOM<sup>®</sup> standard when delivered from the factory. The result is a particularly consistent gradation of grey tones, allowing for optimal radiological clinical reviews.



### Uniform brightness and high colour purity

The monitor shines thanks to its high colour purity and uniform illumination. This is down to the Digital Uniformity Equalizer (DUE), which corrects imbalances automatically, pixel by pixel. Grey and colour tones of radiological and other medical images are correctly rendered over the entire display. This is vital for diagnostics.



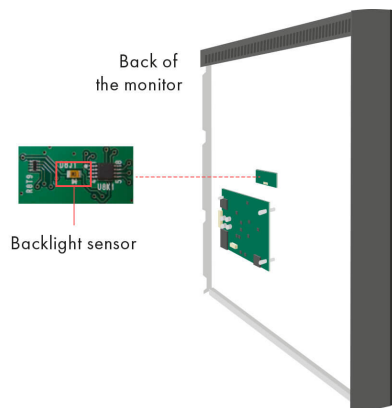
Without DUE

With DUE

## Features

### Constant brightness during operation

A sensor for the backlight permanently determines the luminance of the monitor. The benefit: The defined and calibrated values are rendered exactly just seconds after the monitor is turned on and remain constant during the entire period of use. The sensor is invisibly integrated in the monitor.



### Better viewing thanks to the widescreen format

Thanks to the aspect ratio of 16:10 or 16:9, you can see considerably more from a horizontal perspective than on conventional monitors, for example when performing clinical reviews on two adjacent images.

### Connections for two computers

DisplayPort and DVI-D input enable the connection of two image signals. You can therefore connect two computers simultaneously. You can switch between them automatically or manually, if desired.



### Extended durations of use thanks to automatic shut down

The monitor has an automatic shut down option for the backlight (backlight saver). This extends the duration of use. Similar to

a screen saver, the LEDs turn off when the screen is not being used.

The backlight saver is part of the RadiCS software.

### One monitor, many ports

It doesn't get easier than this: You can connect most of your devices, such as PC, laptop or cameras directly to the monitor because the monitor has a number of different ports. That makes your daily work easier.

### FlexStand: ergonomic base

The base allows the monitor to be tilted and turned, as well as operated in landscape or portrait form. The seamless height adjustment starts from the very bottom on the desk. This guarantees optimal ergonomics, regardless of whether you are standing or sitting in front of the screen. Despite its maximum movement possibilities, the FlexStand base always remains completely stable.

### Five-year warranty

EIZO grants a five-year warranty.\* This is possible thanks to the highly developed production process based on a simple principle of success: sophisticated and innovative monitor technology, made from high-end materials.

\* in Belgium: including on-site replacement service



# Specification

## General

Item no.	MX242W
Case color	Black
Areas of application	Medicine
Product line	RadiForce

## Display

Screen size [in inches]	24,1
Screen size [in cm]	61
Format	16:10
Viewable image size (width x height)	518,4 x 324
Resolution in MP	2.3 Megapixels (colour)
Ideal and recommended resolution	1920 x 1200
Pixel pitch [mm]	0,27 x 0,27
Resolution supported	1920 x 1200, 1920 x 1080 (Full HD), 1600 x 1200, 1680 x 1050, 1280 x 1024, 1024 x 768, 800 x 600, 720 x 400, 640 x 480
Panel technology	IPS
Max. viewing angle horizontal	178 °
Max. viewing angle vertical	178 °
Number of colours or greyscale	1.07 billion colours (DisplayPort, 10 Bit), 16.7 million colours (DisplayPort, 8 Bit), 16.7 million colours (DVI, 8 Bit)
Colour palette/look-up table	543 billion colour tones / 13 Bit
Max. brightness (typical) [in cd/m²]	350
Max. dark room contrast (typical)	1000:1
Backlight	LED

## Features & control

Preset colour/greyscale modes	User1, User2, sRGB, Paper, DICOM
DICOM tone curve	✓
RadiCS application classes	IV, V, VI, VIII
Hardware calibration of brightness and light density characteristic curve	✓
Digital Uniformity Equalizer (homogeneity correction)	✓
OSD language	de, en, fr, es, it, se, ja, zh
Adjustment options	Brightness, gamma, colour saturation and temperature, resolution, DICOM® tone value characteristic, OSD language (de, uk, fr, es, it, se), interpolation, off timer
Integrated power unit	✓

## Ports

Signal inputs	1 x DisplayPort, 1 x DVI-I
USB specification	USB 2.0
USB upstream ports	1 x type B
USB downstream ports	2 x type A
Video signal	DisplayPort, DVI (TMDS), RGB Analog

## Electric data

Power consumption (typical) [in watt]	31
Maximum Power Consumption [in watt]	68
Power Save Mode [in watt]	0,5
Power consumption off [in watt]	0
Power supply	AC 100-120 V / 200-240 V, 50/60 Hz
Power management	✓

## Certification & standards

Certification	CE (Medical Device), EN 60601-1, UL60601-1, CSA C22.2 Nr. 601-1, IEC60601-1, VCCI-B, FCC-B, CAN ICES-3 (B), C-Tick, RoHS, WEEE, CCC, GOST-R
---------------	---

## Warranty

Warranty and service	5 years warranty
----------------------	------------------

## Dimensions & weights

Dimensions [mm]	575 x 423-553 x 245
Weight [in kilograms]	8,7
Weight without stand [in kilograms]	6
Housing dimension details	<a href="#">Dimension drawing (PDF)</a>
Swivel	344 °
Incline forward/backward	0 ° / 30 °
Pivot	✓ Ja
Height adjustment range [mm]	130
Hole spacing	VESA standard 100 x 100 mm

## Software & accessories

Accompanying software and other accessories are available for download	RadiCS LE, ScreenManager PRO Medical
Additional supply	Power cord, Signal cable DisplayPort - DisplayPort, Signal cable DVI-D - DVI-D, USB 2.0 cable, EIZO LCD Utility Disk (incl. PDF manual)
Accessories	RadiCS (The RadiCS software provides extensive validations and automatic adjustment to ensure constant and consistent image reproduction on all RadiForce screens.), RadiNET Pro (EIZO software for network-based quality management in large facilities – with remote functionality for monitors)
Recommended graphics card	MED-XN51LP