

# ThinkPad.

L13 / L13 Yoga

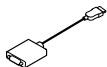
S2 5th Gen / S2 Yoga 5th Gen

## Setup Guide

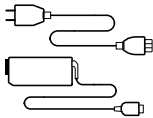
Lenovo

# Unpack

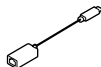
---



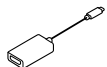
\* Lenovo HDMI to VGA Adapter



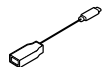
\* Lenovo USB-C to DisplayPort Adapter



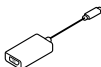
\* Lenovo USB-C to Ethernet Adapter



\* Lenovo USB-C to HDMI Adapter



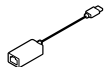
\* Lenovo USB-C to USB-A Adapter



\* Lenovo USB-C to VGA Adapter



\* Lenovo USB-C to USB-C Cable

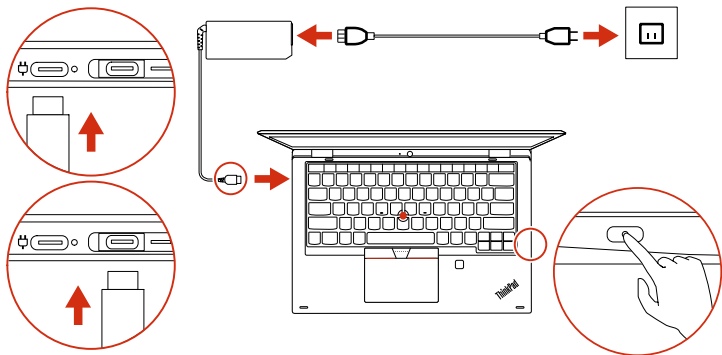


\* ThinkPad Ethernet Extension Adapter Gen 2

\* For selected models

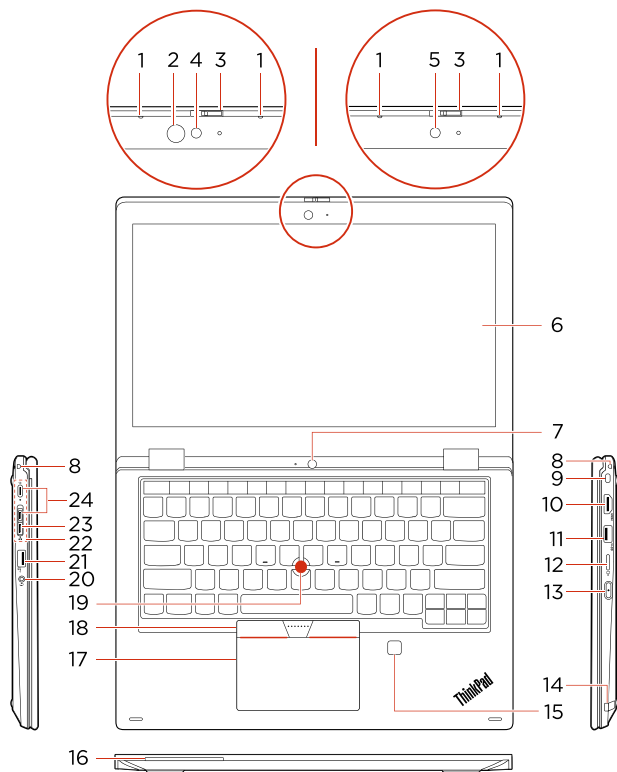
# Initial Setup

---

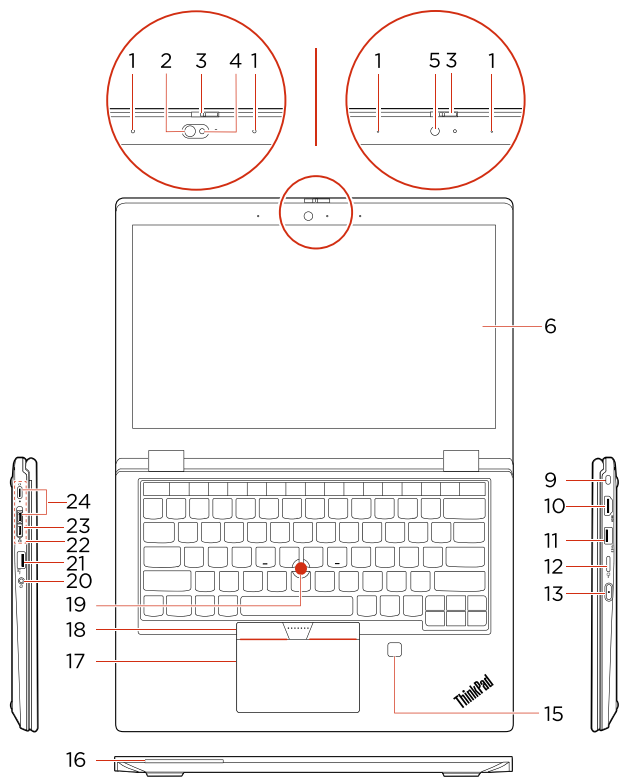


# Overview

## L13 Yoga / S2 Yoga 5th Gen



## L13 / S2 5th Gen



1. Microphones
- \* 2. Infrared LED
3. ThinkShutter
- \* 4. Camera with IR function
- \* 5. Camera
- \* 6. Multi-touch screen
7. Rear camera
8. Pen tether hole
9. Security-lock slot
10. HDMI™ connector
11. USB 3.1 connector Gen 1
12. microSD card slot
13. Power button
14. Pen slot
- \* 15. Fingerprint reader
- \* 16. Smart-card slot
17. Trackpad
18. TrackPoint® buttons
19. TrackPoint pointing stick
20. Audio connector
21. Always On USB 3.1 connector Gen 1
22. Docking-station connector
23. Ethernet extension connector Gen 2
24. USB-C™ connector (USB 3.1 Gen 1)

\* For selected models

**i** Read the statement on USB transfer rate in the *User Guide*. Refer to the *Safety and Warranty Guide* for accessing the *User Guide*.

# Additional information

---

## Specific absorption rate for European Union

YOUR DEVICE MEETS INTERNATIONAL GUIDELINES FOR EXPOSURE TO RADIO WAVES.

The Europe 10g Specific Absorption Rate (SAR) limit for mobile devices is 2.0 W/kg. To view your product specific SAR value, go to <https://support.lenovo.com/us/en/solutions/sar>.

If you are interested in further reducing your RF exposure then you can easily do so by limiting your usage or simply keeping the device away from the body.

## European Union – compliance with the Radio Equipment Directive

Hereby, Lenovo (Singapore) Pte. Ltd., declares that the radio equipment type ThinkPad L13, ThinkPad L13 Yoga, ThinkPad S2 5th Gen, and ThinkPad S2 Yoga 5th Gen are in compliance with Directive 2014/53/EU.

The full text of the system EU declaration of conformity and the EU wireless module declarations are available at the following Internet address:

<https://www.lenovo.com/us/en/compliance/eu-doc>

This radio equipment operates with the following frequency bands and maximum radio-frequency power:

| Technology              | Frequency band [MHz] | Maximum transmit power |
|-------------------------|----------------------|------------------------|
| WLAN<br>802.11b/g/n/ax  | 2400 - 2483.5        | < 20 dBm               |
| WLAN<br>802.11a/n/ac/ax | 5150 - 5725          | < 23 dBm               |
| WLAN<br>802.11a/n/ac/ax | 5725 - 5875          | < 13.98 dBm            |
| Bluetooth<br>BR/EDR/LE  | 2400 - 2483.5        | < 20 dBm               |



---

**First Edition (October 2019)**

**© Copyright Lenovo 2019.**

LIMITED AND RESTRICTED RIGHTS NOTICE: If data or software is delivered pursuant to a General Services Administration "GSA" contract, use, reproduction, or disclosure is subject to restrictions set forth in Contract No. GS-35F-05925.

**Reduce | Reuse | Recycle**



**For Earcode Position Only**

Printed in China  
PN: