

Quick Installation Guide

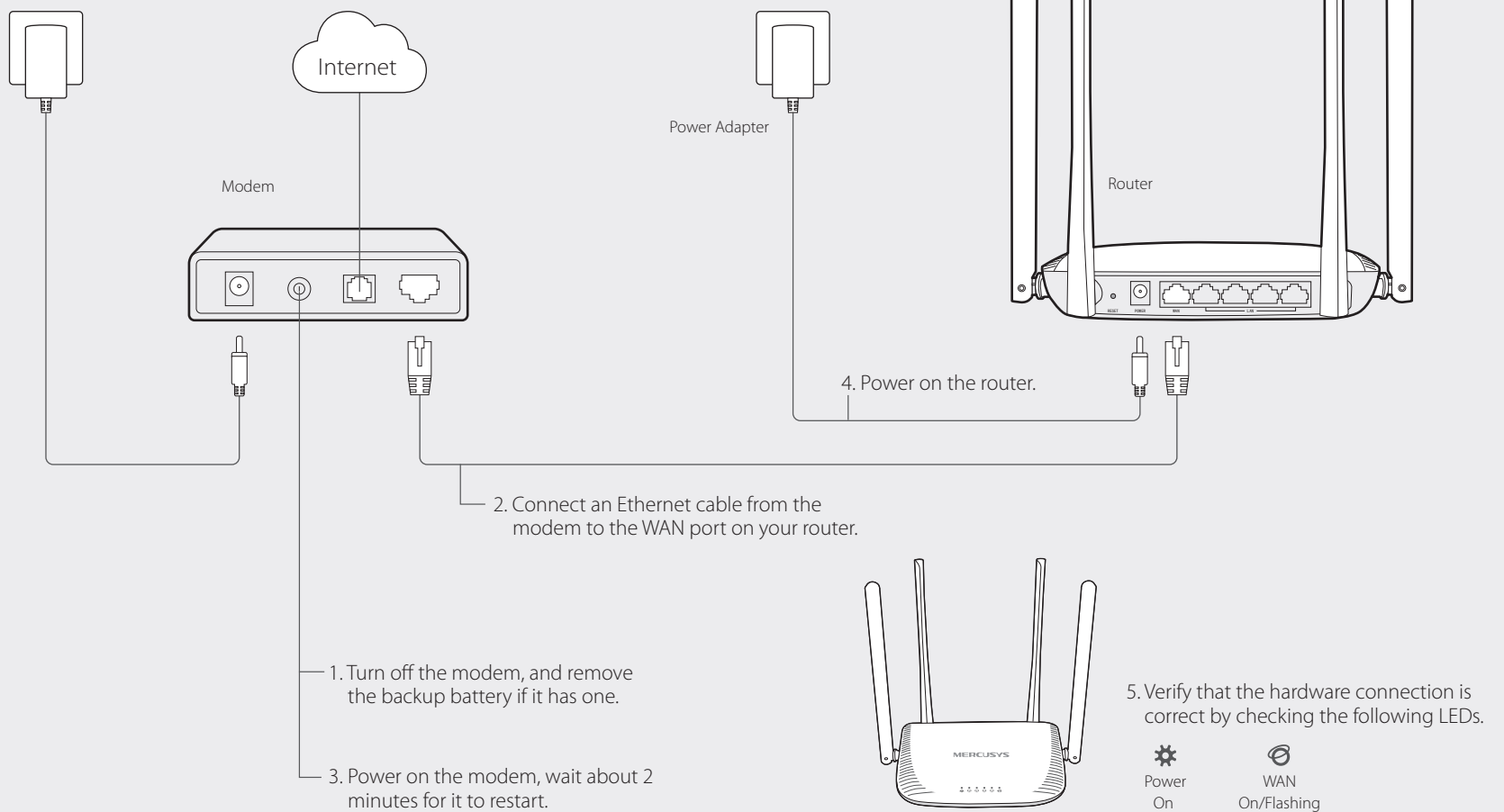
MW325R
300Mbps Enhanced Wireless N Router

For more information, please visit our website:
<http://www.mercusys.com>
7107500053 REV1.0.0



1 | Connect the Hardware

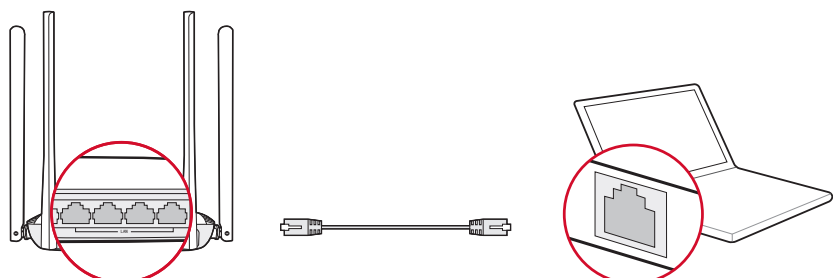
Note: If your Internet connection is through an Ethernet cable from the wall instead of through a DSL/Cable/Satellite modem, connect the Ethernet cable directly to the router's WAN port.



2 | Configure the Router

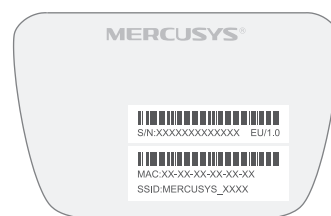
1 Connect your computer to the router (Wired or Wireless).

Wired



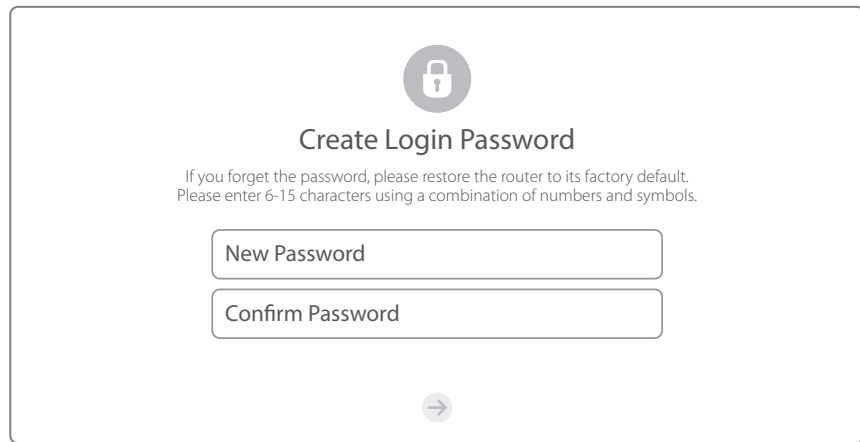
Wireless

Connect wirelessly using the SSID (Network Name) printed on the product label at the bottom of the router.



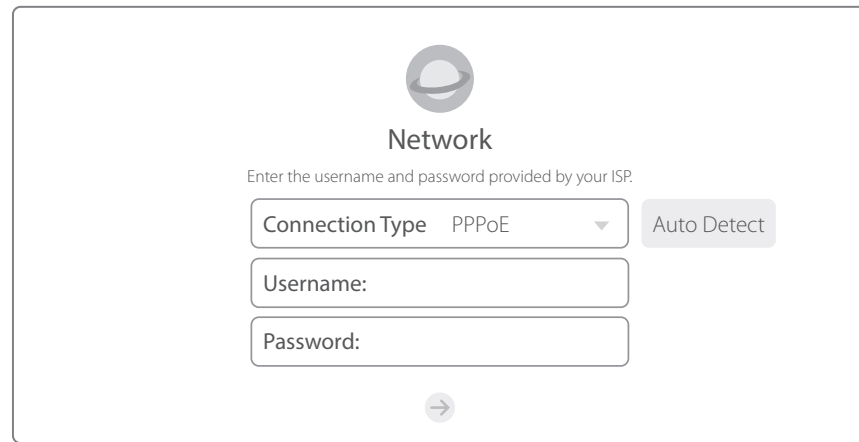
2 Configure the router using a web browser.

a. Enter <http://mwlogin.net> in the address bar of the web browser. Create a login password when prompted.

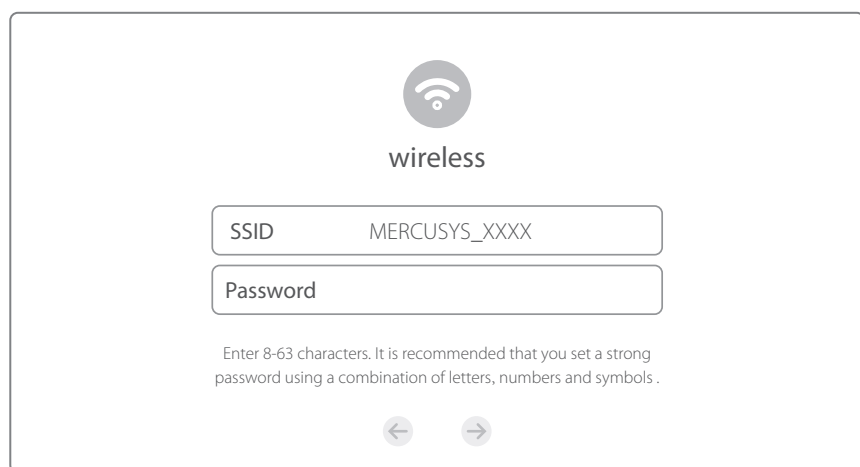


Note: If the login window does not appear, please refer to FAQ>Q1.

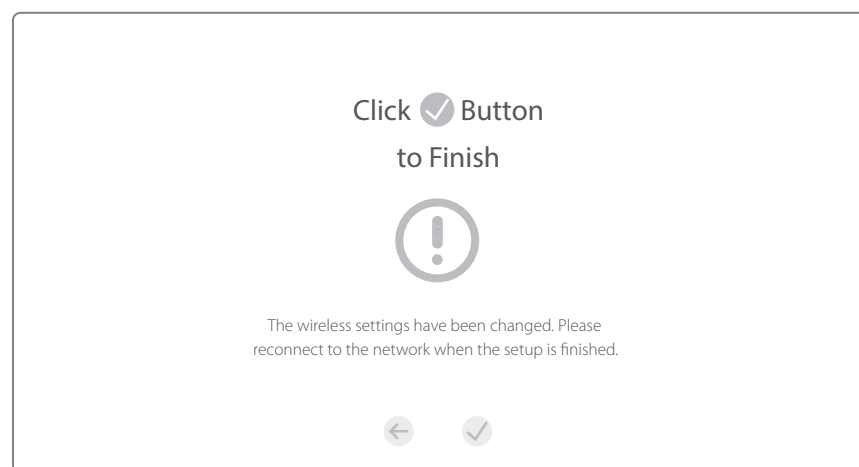
b. Select your connection type and enter the corresponding parameters. If you are unsure of your connection type, click **Auto Detect**. Here we use PPPoE as an example.






c. Customize your wireless network name and password.



d. Click  to complete the setup. Then you can enjoy the Internet! 



LED Indicators

LED	Name	Status	Indication
	Power	Off On	Power is off. Power is on.
	LAN	Off On	The corresponding port is not connected. The corresponding port is connected.
	WAN	Flashing	The corresponding port is transmitting/receiving data.

FAQ (Frequently Asked Questions)

Q1. What can I do if the login window does not appear?

- If the computer is set to a static IP address, change it to obtain an IP address automatically.
- Verify that <http://mwlogin.net> is correctly entered in the web browser.
- Use another web browser and try again.
- Reboot your router and try again.
- Disable the network adapter used currently and then enable it again.

Q2. What can I do if I cannot access the Internet?

- Check if the Internet is working properly by connecting a computer directly to the modem via Ethernet cable.
If not, contact your Internet Service Provider.
- Open a web browser, enter <http://mwlogin.net> and try to set up again.
- Reboot your router and try again.

Note: For cable modem users, reboot the modem first. If the problem still exists, log in to the web management page, go to **Advanced>Network>MAC Address Settings**, select **Use the current computer's MAC address (MAC Clone)** and **Save**.

Q3. How do I restore the router to its factory default settings?

- With the router powered on, press and hold the **RESET** button on the rear panel of the router for at least 5 seconds until all the LEDs turn on temporarily.
- Log in to the web management page of the router, and go to **Advanced>System Tools>Factory Default Restore**, click **Restore**, then wait until the process completes.

Q4. What can I do if I forget my web management page password?

- Restore the router to its factory default settings and then create a new password when prompted.

Q5. What can I do if I forget my wireless network password?

- By default, the wireless network has no password.
- If you have set password for the network, log in to the router's web management page, go to **Basic>Wireless** to obtain or reset your password.