



Philips Evnia Gaming  
Monitor  
OLED gaming monitor

### Evnia 8000

42 (41.54"/105.5 cm diag.)  
3840 x 2160 (4K UHD)



42M2N8900

## Gaming beyond innovation

Be prepared to get stunned by the precise colour reproduction of the Evnia OLED gaming monitor. The innovative Ambiglow redefines what a gaming environment usually is, levelling up not only your game gear, but also your gaming experience.

#### Built for fast action

- Low input lag reduces time delay between devices to monitor
- SmartImage game mode optimised for gamers

#### Immersive visuals

- OLED display for lifelike visuals with deeper black details
- Ultra Wide-Color wider range of colours for a vivid picture
- True 10-bit display reproduces smoother gradients on visuals
- UltraClear 4K UHD (3840 x 2160) resolution for precision

#### Features designed for gamers' needs

- LowBlue mode and Flicker-free easy-on-the eyes viewing
- Enhanced audio with DTS Sound™
- Access and display multiple sources on two devices
- Ambiglow intensifies entertainment with a halo of light
- Tilt, swivel and height-adjust for an ideal viewing position
- Connect your notebook with one USB-C cable

EVNIA

PHILIPS

OLED gaming monitor  
Evnia 8000 42 (41.54"/105.5 cm diag.), 3840 x 2160 (4K UHD)

42M2N8900/00

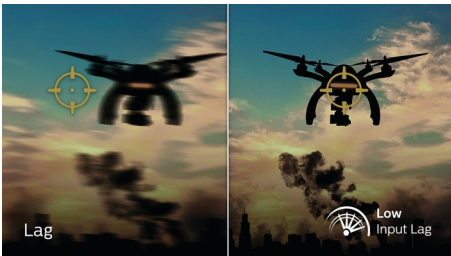
# Highlights

## Philips OLED display



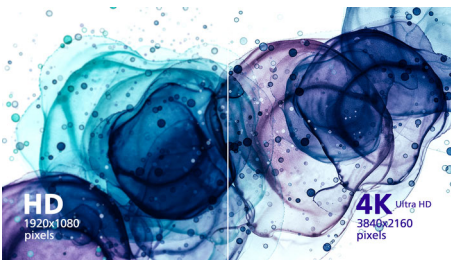
This Philips OLED display delivers a wider viewing angle and uniquely lifelike visuals. Deeper black for a stunning viewing experience. Details in shadows and highlights are precisely reproduced.

## Low input lag



Input lag is the amount of time that elapses between performing an action with connected devices and seeing the result on screen. Low input lag reduces the time delay between entering a command from your devices to monitor, greatly improving play on twitch-sensitive video games, particularly important for playing fast-paced, competitive games.

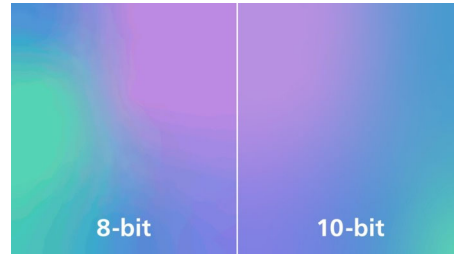
## UltraClear 4K UHD resolution



These Philips displays utilise high-performance panels to deliver UltraClear, 4K UHD (3840 x 2160) resolution images. Whether you are a demanding professional requiring extremely detailed images for CAD solutions, a user of

3D graphics applications or a financial wizard working on huge spreadsheets, Philips displays will make your images and graphics come alive.

## True 10-bit colour depth



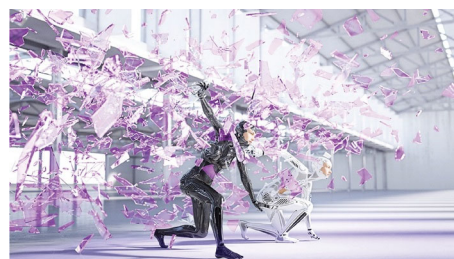
With this Philips true 10-bit colour display, you can see colour-critical professional work of exceptional colour accuracy that meets professional standards. Compared with conventional 8-bit colour displays, this Philips monitor produces a more natural transition between hues for smoother gradients.

## LowBlue mode and Flicker-free



Our LowBlue Mode and Flicker-free technology have been developed to reduce eye strain and fatigue often caused by long hours in front of a monitor.

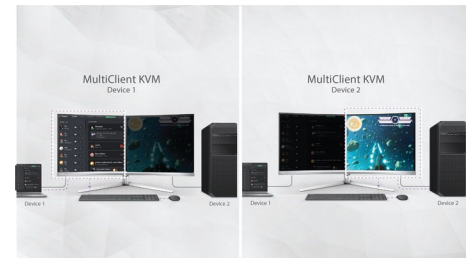
## DTS Sound™



DTS Sound is an audio-processing solution designed to optimise the playback of music, movies, streaming and games on the PC

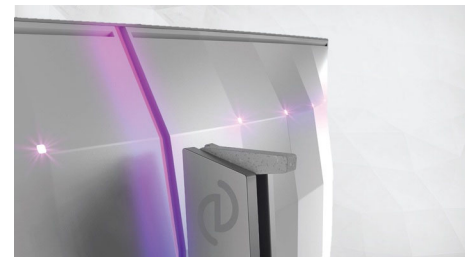
regardless of form factors. DTS Sound enables an immersive virtual surround sound experience, complete with rich bass and dialogue enhancement and maximised volume levels free of any clipping or distortion.

## MultiView and built-in KVM



Control and switch between two devices through a single keyboard and mouse with the built-in KVM. MultiView lets you survey both sources simultaneously on one screen. With these features, you can reduce cable clutter and save valuable time. Perfect for streamers with two PCs, content creators or when prepping devices for a LAN event.

## Ambiglow technology



Ambiglow adds a new dimension to your viewing experience. The innovative Ambiglow technology enhances the content on the screen by creating a halo of light from the monitor. Its fast processor analyses the incoming image content and continuously adapts the colour and brightness of the emitted light to match the image. Especially suited for watching movies, sports or playing games, Philips Ambiglow offers you a unique and immersive viewing experience.



# Specifications

## Picture/Display

- Monitor Panel Type: OLED
- Panel Size: 41.54 inch/105.5 cm
- Display Screen Coating: Anti-Glare, Low-reflection 2%, Haze 25%
- Effective viewing area: 919.68 (H) x 517.32 (V)
- Pixel format: RVBGB Strip arrangement
- Aspect ratio: 16:9
- Maximum resolution: 3840 x 2160 @ 138 Hz\* (DP overclock)
- Pixel Density: 106.06 PPI
- Response time (typical): 0.1 ms (Grey to Grey)\*
- Low Input Lag
- Brightness: Peak: 450 nit, Normal: 135 nit
- SmartContrast: Mega Infinity DCR
- Contrast ratio (typical): 1,500,000:1
- Pixel pitch: 0.2395 x 0.2395 mm
- Viewing angle: 178° (H)/178° (V), @ C/R > 10000
- Flicker-free
- HDR: HDR 10 supported
- Colour gamut (min.): DCI-P3: 98.5%\*
- Colour gamut (typical): NTSC 110.3%\*, sRGB 131.3%\*, Adobe RGB 93.6%\*
- Picture enhancement: SmartImage game
- Display colours: Colour support 1.07 billion colours (10-bit)
- Scanning Frequency: 30 - 255 kHz (H)/48 - 138 Hz (V)
- LowBlue Mode
- EasyRead
- Delta E: < 2 (sRGB)
- sRGB
- Adaptive sync
- Ambiglow: 3 sided

## Connectivity

- Signal Input: HDMI 2.1 x 2, DisplayPort 1.4 x 1, USB-C x 1 (Video, Data and Power Delivery)
- HDCP: HDCP 1.4 (HDMI/DisplayPort/USB-C), HDCP 2.2 (HDMI/DisplayPort/USB-C), HDCP 2.3 (HDMI/DisplayPort/USB-C)
- USB Hub: USB version 3.2 Gen1 / 5 Gbps, USB-B upstream x 1, USB-A downstream x 4 (with 2 for fast charge B.C 1.2)
- Audio (In/Out): Audio out
- Sync Input: Separate Sync

## Power Delivery

- Version: USB PD version 3.0
- Max power delivery: USB-C up to 90 W (5 V/3 A, 7 V/3 A, 9 V/3 A, 10 V/3 A, 12 V/3 A, 15 V/3 A, 20 V/4.5 A)

## Convenience

- Built-in Speakers: 10 W x 2, DTS
- MultiView: PIP/PBP mode, 2 x devices
- KVM
- User convenience: Power On/Off, Menu/OK, Input/Up, Game Settings/Down, SmartImage game/Back
- OSD Languages: Brazil Portuguese, Czech, Dutch, English, Finnish, French, German, Greek, Hungarian, Italian, Japanese, Korean, Polish,

- Portuguese, Russian, Spanish, Simplified Chinese, Swedish, Turkish, Traditional Chinese, Ukrainian
- Other convenience: Kensington lock, VESA mount (100 x 100 mm), VESA bracket
- Plug and Play Compatibility: DDC/CI, Mac OS X, sRGB, Windows 11/10/8.1/8

## Stand

- Height adjustment: 120 mm
- Swivel: -/+ 20 degree
- Tilt: -5/15 degree

## Power

- On mode: TBC W (typ.)
- Standby mode: 0.5 W (typ.)
- Off mode: 0.3 W (typ.)
- Energy Label Class: G
- Power LED indicator: Operation - White, Standby mode - White (flashing)
- Power supply: Internal, 100–240 VAC, 50–60 Hz

## Dimensions

- Product with stand (max height): 932 x 689 x 359 mm
- Product without stand (mm): 932 x 535 x 79 mm
- Packaging in mm (W x H x D): 1070 x 635 x 188 mm

## Weight

- Product with stand (kg): 17.30 kg
- Product without stand (kg): 13.84 kg
- Product with packaging (kg): 21.01 kg

## Operating conditions

- Temperature range (operation): 0°C to 40 °C
- Temperature range (storage): -20°C to 60 °C
- Relative humidity: 20%-80 %
- Altitude: Operation: +12,000 ft (3658 m), Non-operation: +40,000 ft (12,192 m)
- MTBF: 30,000 hour(s)

## Sustainability

- Environmental and energy: RoHS
- Recyclable packaging material: 100 %
- Specific Substances: Mercury free, PVC/BFR free housing

## Compliance and standards

- Regulatory Approvals: CB, CE Mark, FCC Class B, ICES-003, CU-EAC, EAEU RoHS, TUV/ISO9241-307, TUV-BAUART, cETLus

## Cabinet

- Colour: White
- Finish: Textured

## What's in the box?

- Monitor with stand
- Cables: HDMI cable, DisplayPort cable, USB upstream cable, USB-C to USB-C cable, Power cable
- User Documentation
- Accessory: Remote control

Issue date 2023-02-09

© 2023 Koninklijke Philips N.V.  
All Rights reserved.

Version: 1.3.2

Specifications are subject to change without notice.  
Trademarks are the property of Koninklijke Philips N.V.  
or their respective owners.

12 NC: 8670 001 86166  
EAN: 87 12581 79870 3

[www.philips.com](http://www.philips.com)

\* The maximum resolution works for DP input only.

\* For best output performance, please always ensure that your graphic card is capable of achieving the maximum resolution and refresh rate of this Philips display.

\* Response time value equal to SmartResponse

\* DCI-P3 Coverage based on CIE1976

\* NTSC Area based on CIE 1976

\* sRGB Area based on CIE1931

\* Adobe RGB Coverage based on CIE 1976

\* For USB-C power and charging function, your Notebook/device must support USB-C standard Power Delivery specifications. Please check with your Notebook user manual or manufacturer for more details.

\* For Video transmission via USB-C, your Notebook/device must support USB-C DP Alt mode

\* The monitor may look different from feature images.