

Canon

PIXMA TS5300 series

Getting Started

Démarrage

Inbetriebnahme

Aan de Slag-gids

Guida Rapida

Para Começar

Guía de inicio

ΞΕΚΙΝΩΝΤΑΣ

Uppstartsguide

Komme i gang

Før du begynder

Aloitusopas



<https://ij.start.canon>



Read **Safety and Important Information** (addendum) first.

Commencez par lire **Sécurité et informations importantes** (addendum).

Lesen Sie **Sicherheitsinformationen und wichtige Hinweise** (Anhang) zuerst.

Lees eerst **Veiligheidsinformatie en belangrijke informatie** (addendum).

Leggere innanzitutto **Informazioni importanti e sulla sicurezza** (addendum).

Leia **Informações Importantes e Sobre Segurança** (adendo) primeiro.

Lea primero **Información de seguridad e información importante** (apéndice).

Διαβάστε πρώτα τις **Πληροφορίες για την ασφάλεια και σημαντικές πληροφορίες** (συμπλήρωμα).

Läs **Information om säkerhet och annan viktig information** (bilaga) först.

Les **Sikkerhetsinformasjon og viktig informasjon** (tillegg) først.

Læs **Sikkerhedsoplysninger og vigtige oplysninger** (tillæg) først.

Lue **Turvallisuus ja tärkeitä tietoja** (lisähuomautus) ensin.



Q T 6 3 1 6 6 V 0 1

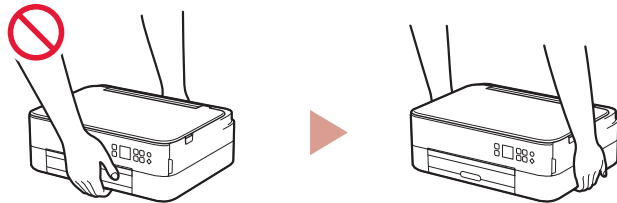


Installing the Printer.....page 1
 Installation de l'imprimante.....page 1
 Installation des Druckers.....Seite 1
 De printer installeren.....pagina 1
 Installazione della stampante.....pagina 1
 Instalando a impressora.....página 1
 Instalación de la impresora.....página 1
 Εγκατάσταση του εκτυπωτή.....σελίδα 1
 Installera skrivaren.....sida 1
 Installere skrивeren.....side 1
 Installation af printeren.....side 1
 Tulostimen asennus.....sivu 1

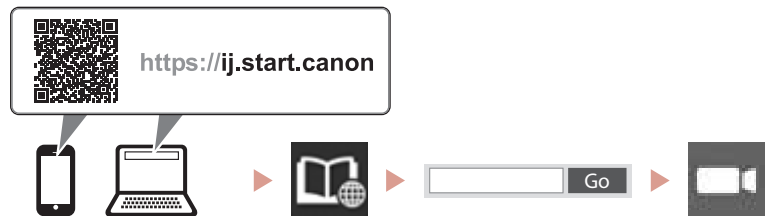


Connecting to a Computer, Smartphone or Tablet.....page 4
 Connexion à un ordinateur, un smartphone ou une tablette.....page 4
 Herstellen einer Verbindung mit einem Computer, Smartphone oder Tablet...Seite 4
 Verbinden met een computer, smartphone of tablet.....pagina 4
 Connessione a un computer, uno smartphone o un tablet.....pagina 4
 Conectando a um computador, smartphone ou tablet.....página 4
 Conexión con un ordenador, teléfono inteligente o tableta.....página 4
 Σύνδεση σε υπολογιστή, smartphone ή tablet.....σελίδα 4
 Ansluta till en dator, smarttelefon eller surfplatta.....sida 4
 Koble til en datamaskin, en smarttelefon eller et nettbrett.....side 4
 Tillslutning til en computer, smartphone eller tablet.....side 4
 Yhdistäminen tietokoneeseen, älypuhelimeseen tai tablet-tietokoneeseen....sivu 4

- Holding the Printer
- Manipulation de l'imprimante
- Halten des Druckers
- De printer vasthouden
- Come tenere la stampante
- Segurando a impressora
- Cómo sujetar la impresora
- Πώς να κρατήσετε τον εκτυπωτή
- Bära skrivaren
- Holde skrивeren
- Holde printeren
- Tulostimen pitäminen



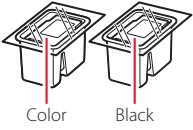
- Instructional Videos
- Instructions vidéo
- Anleitungsvideos
- Instructievideo's
- Video informativi
- Vídeos instrucionais
- Vídeos instructivos
- Εκπαιδευτικό βίντεο
- Instruktionsfilmer
- Instruksjonsvideoer
- Instruktionsvideoer
- Ohjevideot



Setting Up the Printer

1. Box Contents

- FINE cartridges

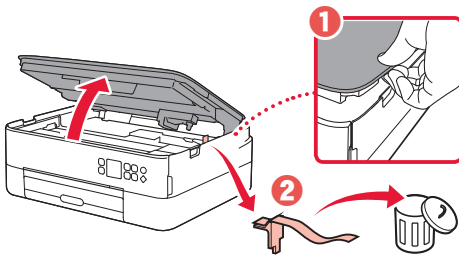


- Power cord
- Setup CD-ROM for Windows
- Safety and Important Information
- Getting Started (this manual)

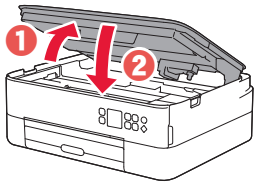
2. Removing Packing Materials



- 1 Remove and dispose of any packing materials and orange tape.
- 2 Open the scanning unit / cover, remove and dispose of the orange tape and protective material inside.



- 3 Close the scanning unit / cover.
 - Open the scanning unit / cover fully and then close it.

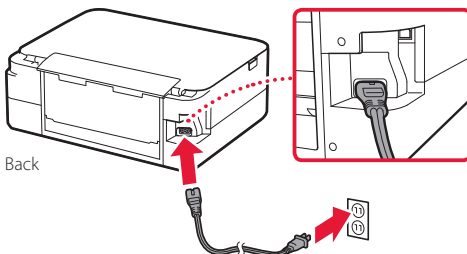


Caution
Watch your fingers.

3. Turning on the Printer

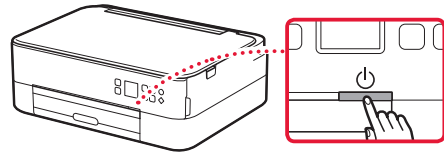


- 1 Connect the power cord.

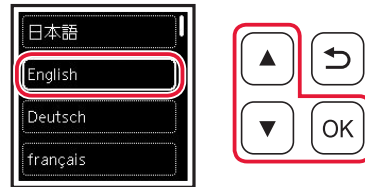


Important
At this time, do not connect any other cables.

- 2 Press the **ON** button.



- 3 Use the **▲**, **▼** and **OK** buttons to select a language.



- 4 Press the **OK** button.



Important

Scan the QR code for a video tutorial of the setup procedure.

- 5 Use the **▲** and **▼** buttons to check the on-screen content, and then press the **OK** button.

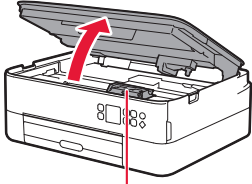


Setting Up the Printer

4. Installing the FINE Cartridges



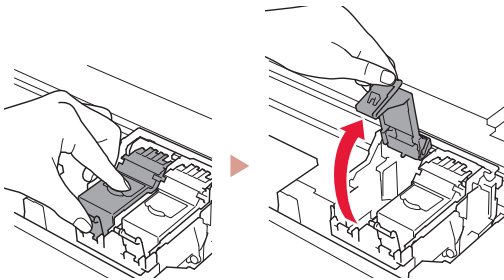
- 1 Open the scanning unit / cover.



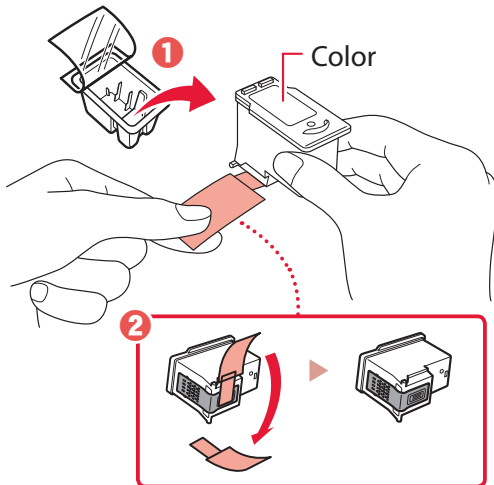
⚠ Caution

Do not touch the FINE cartridge holder until it stops moving.

- 2 Pinch and open the ink cartridge locking cover on the left-hand side.

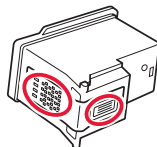


- 3 Remove the Color FINE cartridge from the container and remove the protective tape.

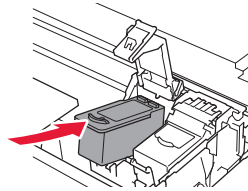


⚠ Important

- Do not touch the ink on the protective tape. It could stain your hands or surrounding objects.
- Do not touch the areas shown in the figure. Otherwise, the printer may not print correctly.

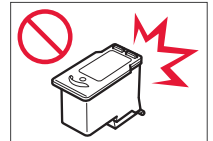


- 4 Set the Color FINE cartridge in the FINE cartridge holder.

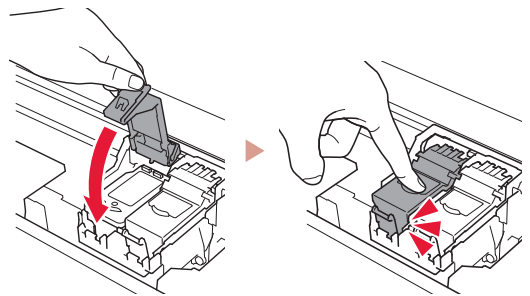


⚠ Important

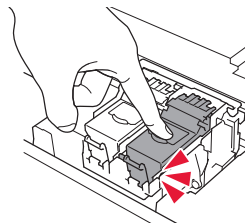
Do not bump the FINE cartridge. Doing so may cause a malfunction.



- 5 Push down the ink cartridge locking cover firmly until it snaps into place to close it completely.

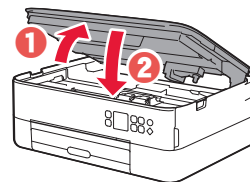


- 6 Repeat steps 2 to 5 and install the Black FINE cartridge as well, on the right-hand side.



- 7 Close the scanning unit / cover.

- The printer will start initializing.



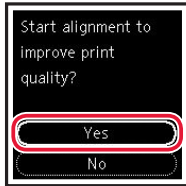
⚠ Caution

Watch your fingers.

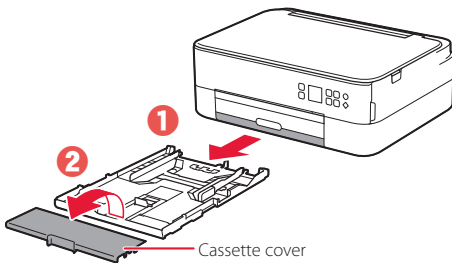
5. Loading Paper



- 1 Press the **OK** button.

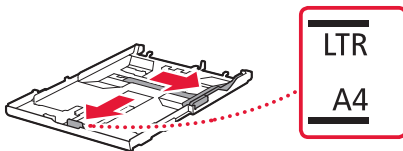


- 2 Remove the cassette from the printer and remove the cassette cover.



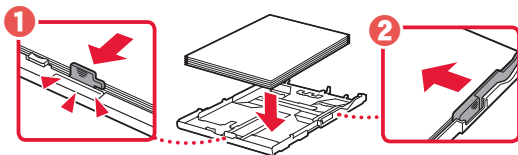
- 3 Slide apart the paper guides.

- Slide the right paper guide to the right edge. Align the front paper guide with the Letter or A4 mark.

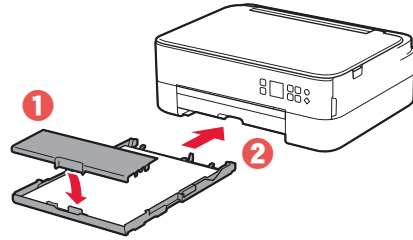


- 4 Load paper.

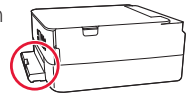
- Load 2 or more sheets of Letter or A4 sized plain paper with the print side facing down.
- Place the paper against the front paper guide, and align the right paper guide to the width of the paper.



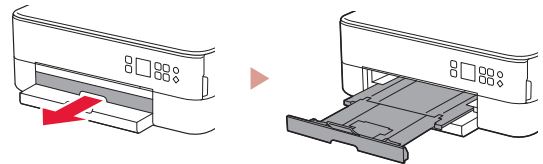
- 5 Attach the cassette cover and replace the cassette.



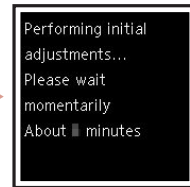
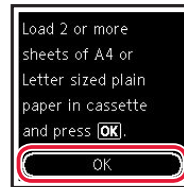
- Look at it from the side to confirm it looks like the diagram.



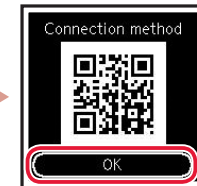
- 6 Pull out the paper output tray.



- 7 Press the **OK** button.



- 8 Press the **OK** button.



»»» Important

Scan the QR code for a video tutorial of the setup procedure.

- 9 Check that the following screen appears.



If you will use the printer without connecting any other devices, setup is now complete.

Setting Up the Printer

What device are you connecting?



Computer



Computer and
smartphone



Smartphone

6-a

Connecting to a Computer

If you are using multiple computers, perform these steps on each computer.



- 1 Access the Canon website from a computer.

<https://ij.start.canon>



- 2 Select  **Set Up**.

- 3 Enter your printer's model name and click **Go**.

- 4 Click **Start**.

- 5 Click **If you have already prepared your printer, go to Connect**.

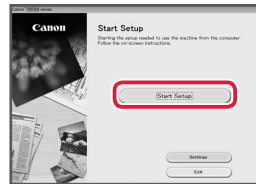
▶▶▶ Note

The following steps are for Windows (except Windows 10 in S mode) and macOS users. For other operating systems, continue setup by following the on-screen instructions instead.

- 6 Click **Download**.

- 7 Run the downloaded file.

- 8 Click **Start Setup**.



- 9 Follow the on-screen instructions.

- These operations may take some time.
- To connect to a smartphone as well, see "6-b. Connecting to a Smartphone" on page 5.

Using the Setup CD-ROM for Windows

Double click **EasySetup.exe** in the CD-ROM, and then continue from step 3. If you do not have an internet connection, open the **win** folder in the CD-ROM and double click **SETUP.exe**. This will install the printer driver.

6-b Connecting to a Smartphone

If you are using multiple smartphones, perform these steps on each smartphone.



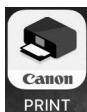
Prepare the following before starting.

- 1 Enable the Wi-Fi setting on your smartphone.
 - 2 Connect your smartphone to the wireless router (if you have a wireless router).
- Refer to your smartphone and wireless router manuals for more details.

- 1 Install the "Canon PRINT Inkjet/SELPHY" app on your smartphone.
 - Scan the QR code shown on the right to access the Canon website, and then download the app.



- 2 Open the installed app.



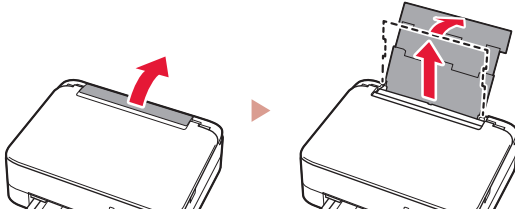
- 3 Follow the on-screen instructions in the app to add your printer.

Once you have added your printer, you can print from your smartphone.
To print photos, see "Loading Photo Paper" on page 6.

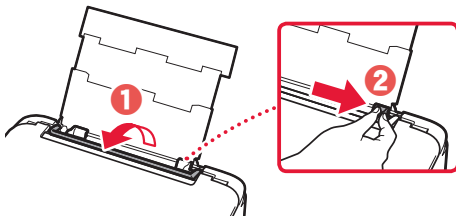
Loading Photo Paper

Photo paper can only be loaded in the rear tray.

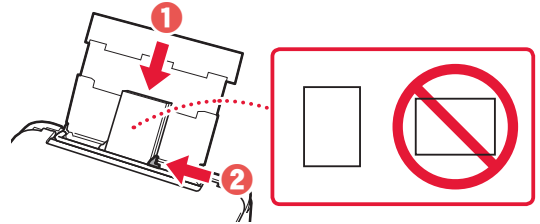
- 1 Open the rear tray cover and extend the paper support.



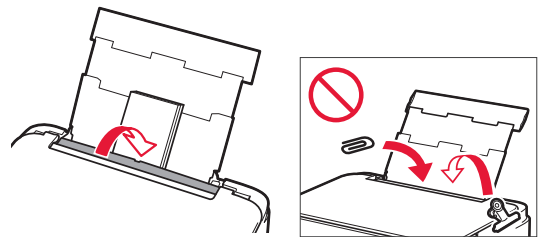
- 2 Open the feed slot cover and slide the right-hand side paper guide to the far right.



- 3 Load several sheets of photo paper with the print side facing up and slide the side paper guide against the edge of the paper stack.

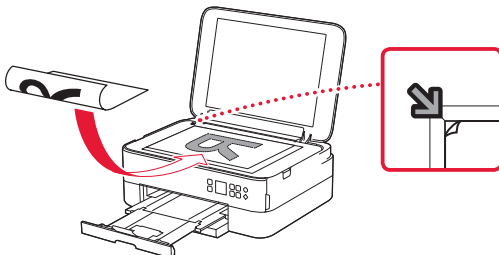


- 4 Close the feed slot cover.
 - Follow the on-screen instructions to set information for the loaded paper.



Copying

- 1 Turn on the printer.
- 2 Load Letter or A4 sized plain paper.
- 3 Open the document cover and place the document face down on the platen. Align the document with the alignment mark (↙).



- 4 Close the document cover.
- 5 Press the **OK** button.
- 6 Select **Copy settings**, and then press the **OK** button.
- 7 Specify print settings using the ▲, ▼ and **OK** buttons.

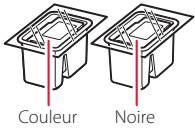


- 8 Press the **Start** button.

Configuration de l'imprimante

1. Contenu de la boîte

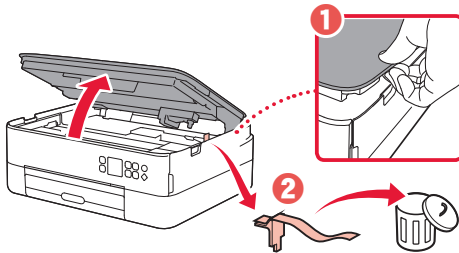
- Cartouches FINE
- Cordon d'alimentation
- CD-ROM d'installation pour Windows
- Sécurité et informations importantes
- Démarrage (ce manuel)



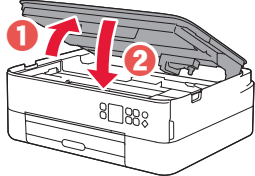
2. Retrait du matériel d'emballage



- 1 Enlevez et jetez tout matériel d'emballage et bande orange.
- 2 Ouvrez l'unité de numérisation / capot, retirez et jetez tout bande orange et matériau protecteur se trouvant à l'intérieur.



- 3 Fermez l'unité de numérisation / capot.
 - Ouvrez complètement l'unité de numérisation / capot, puis fermez-la.

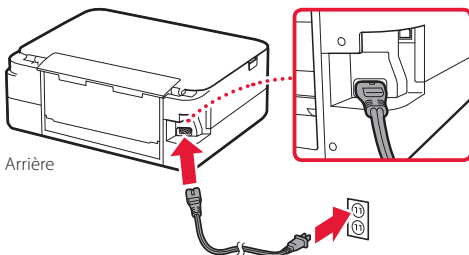


⚠ Attention
Surveillez vos doigts.

3. Mise sous tension de l'imprimante

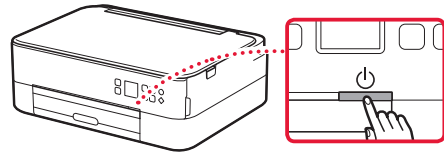


- 1 Branchez le cordon d'alimentation.

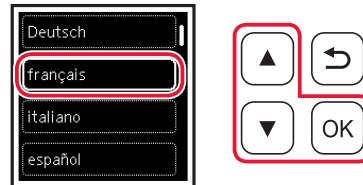


»»» Important
À ce stade, ne branchez aucun autre câble.

- 2 Appuyez sur le bouton **MARCHE (ON)**.



- 3 Utilisez les boutons ▲, ▼ et **OK** pour sélectionner une langue.



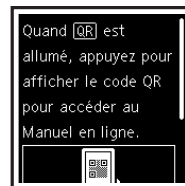
- 4 Appuyez sur le bouton **OK**.



»»» Important

Numérisez le code QR pour obtenir un didacticiel vidéo de la procédure de configuration.

- 5 Utilisez les boutons ▲ et ▼ pour vérifier le contenu à l'écran, puis appuyez sur le bouton **OK**.

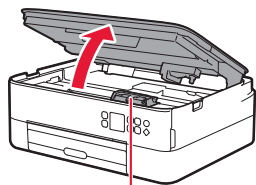


Configuration de l'imprimante

4. Installation des cartouches FINE



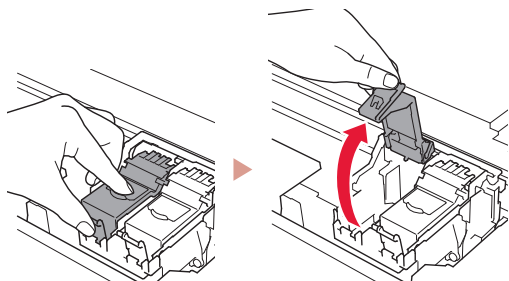
- 1 Ouvrez l'unité de numérisation / capot.



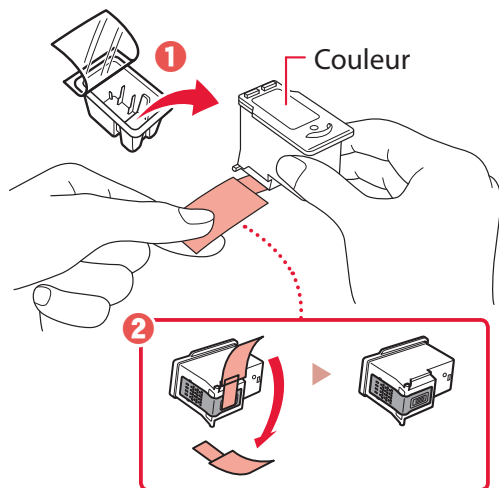
⚠ Attention

Ne touchez pas le porte-cartouche FINE avant son arrêt.

- 2 Pincez et ouvrez le couvercle de verrouillage de cartouche d'encre sur la gauche.

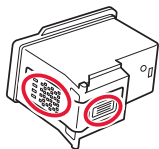


- 3 Retirez la cartouche FINE couleur du conteneur et retirez le ruban protecteur.

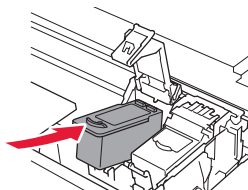


»»» Important

- Ne touchez pas l'encre se trouvant sur le ruban protecteur. Cela pourrait salir vos mains ou les objets environnants.
- Ne touchez pas les zones présentées dans la figure. Sinon, l'imprimante pourrait ne pas imprimer correctement.

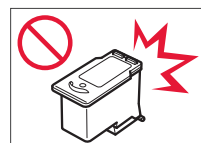


- 4 Installez la cartouche FINE couleur dans le porte-cartouche FINE.

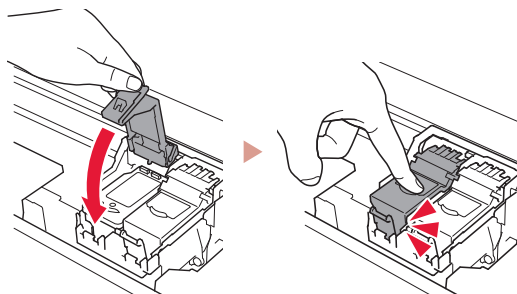


»»» Important

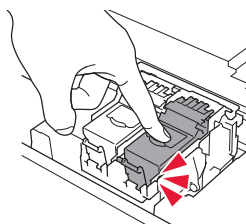
Ne cognez pas la cartouche FINE. Cela risquerait d'entraîner un dysfonctionnement.



- 5 Poussez fermement vers le bas le couvercle de verrouillage de cartouche d'encre jusqu'au déclic pour le fermer complètement.

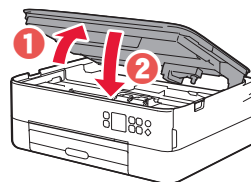


- 6 Répétez les étapes 2 à 5 et installez également la cartouche FINE noire sur la droite.



- 7 Fermez l'unité de numérisation / capot.

- L'imprimante commence à s'initialiser.



⚠ Attention

Surveillez vos doigts.

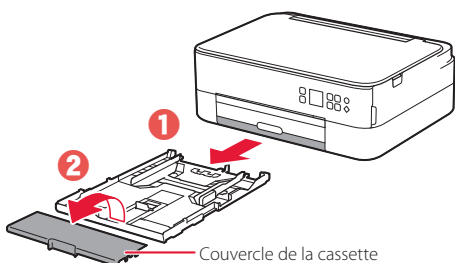
5. Chargement du papier



1 Appuyez sur le bouton **OK**.

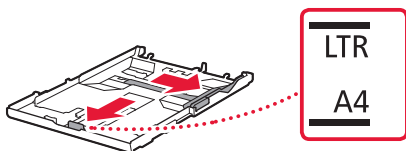


2 Retirez la cassette de l'imprimante et retirez le couvercle de la cassette.



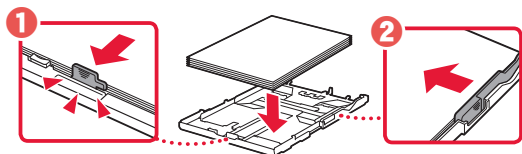
3 Faites glisser séparément les guides papier.

- Faites glisser le guide papier droit vers le bord droit.
- Alignez le guide papier avant sur la marque Lettre ou A4.

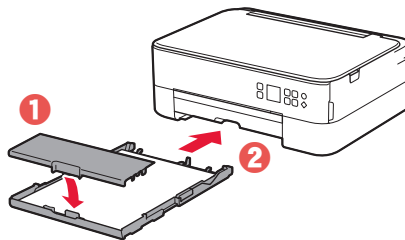


4 Chargez du papier.

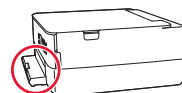
- Chargez au moins 2 feuilles de papier ordinaire au format Lettre ou A4 avec la face à imprimer vers le bas.
- Placez le papier contre le guide papier avant et alignez le guide papier droit sur la largeur du papier.



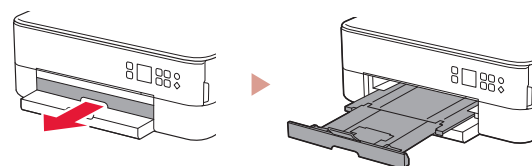
5 Fixez le couvercle de la cassette et remettez la cassette en place.



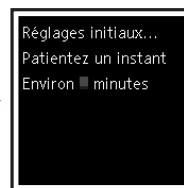
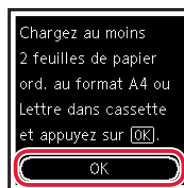
- Observez-la depuis le côté pour confirmer qu'elle se présente comme dans le diagramme.



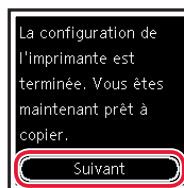
6 Retirez le bac de sortie papier.



7 Appuyez sur le bouton **OK**.



8 Appuyez sur le bouton **OK**.



» Important

Numérisez le code QR pour obtenir un didacticiel vidéo de la procédure de configuration.

9 Assurez-vous que l'écran suivant s'affiche.



Pour utiliser l'imprimante sans connecter aucun autre périphérique, la configuration est terminée.

Quel périphérique connectez-vous ?



Ordinateur



Ordinateur et
smartphone



Smartphone

6-a

Connexion à un ordinateur

Si vous utilisez plusieurs ordinateurs, effectuez ces étapes sur chaque ordinateur.



- 1 Accès au site Web Canon à partir d'un ordinateur.

<https://ij.start.canon>



- 2 Sélectionnez  **Configuration**.

- 3 Entrez le nom de modèle de votre imprimante et cliquez sur **Accéder**.

- 4 Cliquez sur **Démarrer**.

- 5 Cliquez sur **Si vous avez déjà préparé votre imprimante, allez à Connecter**.

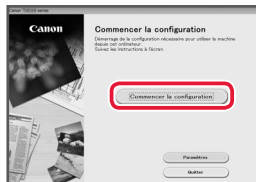
»»» Remarque

Les étapes suivantes concernent les utilisateurs Windows (sauf Windows 10 en mode S) et macOS. Pour les autres systèmes d'exploitation, continuez la configuration en suivant les instructions à l'écran.

- 6 Cliquez sur **Télécharger**.

- 7 Exécutez le fichier téléchargé.

- 8 Cliquez sur **Commencer la configuration**.



- 9 Suivez les instructions à l'écran.

- Ces opérations peuvent prendre du temps.
- Pour vous connecter aussi à un smartphone, voir « 6-b. Connexion à un smartphone » à la page 5.

Utilisation du CD-ROM d'installation pour Windows

Cliquez deux fois sur **EasySetup.exe** à partir du CD-ROM, puis continuez à partir de l'étape 3. Si vous ne disposez pas d'une connexion Internet, ouvrez le dossier **win** à partir du CD-ROM et cliquez deux fois sur **SETUP.exe**. Cette procédure permet d'installer le pilote d'imprimante.

6-b

Connexion à un smartphone

Si vous utilisez plusieurs smartphones, effectuez ces étapes sur chaque smartphone.



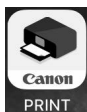
Préparez les éléments suivants avant de démarrer.

- 1 Activez le paramètre Wi-Fi sur votre smartphone.
- 2 Connectez votre smartphone au routeur sans fil (si vous disposez d'un routeur sans fil).

Pour plus d'informations, consultez la documentation de votre smartphone et du routeur sans fil.

1 Installez l'application « Canon PRINT Inkjet/SELPHY » sur votre smartphone.

- Scannez le code QR qui apparaît à droite pour accéder au site Web Canon, puis téléchargez l'application.



2 Ouvrez l'application installée.

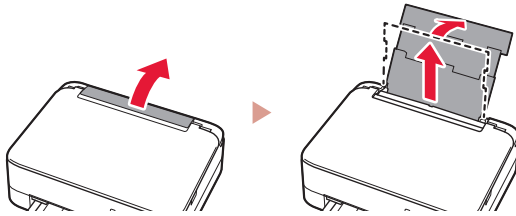
3 Suivez les instructions à l'écran fournies par l'application pour ajouter votre imprimante.

Une fois que vous avez ajouté votre imprimante, vous pouvez imprimer depuis votre smartphone. Pour imprimer des photos, voir « Chargement de papier photo » à la page 6.

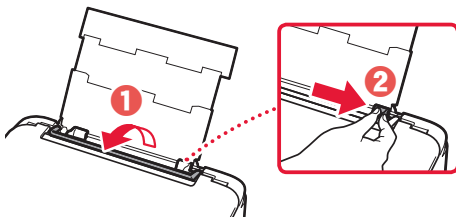
Chargement de papier photo

Le papier photo peut être chargé uniquement dans le réceptacle arrière.

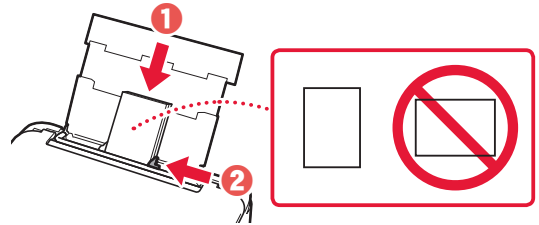
- 1 Ouvrez le couvercle du réceptacle arrière et déployez le support papier.



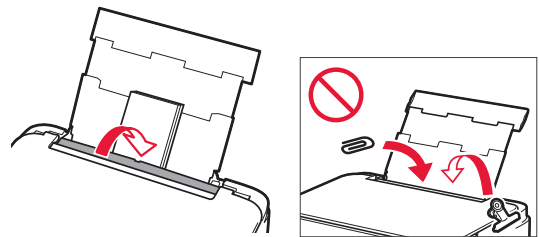
- 2 Ouvrez le couvercle de la fente d'alimentation et faites glisser le guide papier droit vers l'extrême droite.



- 3 Chargez plusieurs feuilles de papier photo face à imprimer vers le haut et faites glisser le guide papier latéral contre le bord de la pile de papier.

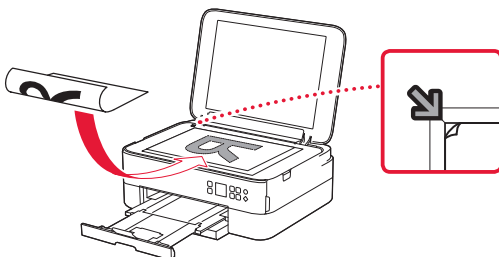


- 4 Fermez le couvercle de la fente d'alimentation.
 - Suivez les instructions à l'écran pour définir les informations sur le papier chargé.



Copie

- 1 Mettez l'imprimante sous tension.
- 2 Chargez du papier ordinaire au format Lettre ou A4.
- 3 Ouvrez le capot du scanner et placez le document face vers le bas sur la vitre d'exposition. Alignez le document avec le repère d'alignement (↙).



- 4 Fermez le capot du scanner.
- 5 Appuyez sur le bouton **OK**.
- 6 Sélectionnez **Paramètres de copie** puis appuyez sur le bouton **OK**.
- 7 Spécifiez les paramètres d'impression à l'aide des boutons ▲, ▼ et **OK**.

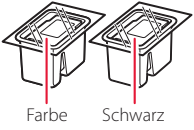


- 8 Appuyez sur le bouton **Démarrage (Start)**.

Einrichten des Druckers

1. Inhalt der Box

● FINE-Patronen



● Netzkabel

● Installations-CD-ROM für Windows

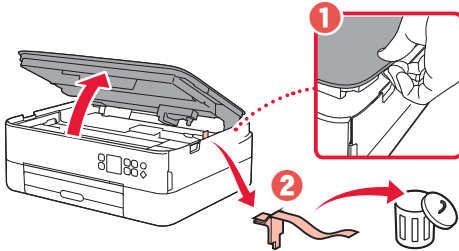
● Sicherheitsinformationen und wichtige Hinweise

● Inbetriebnahme (dieses Handbuch)

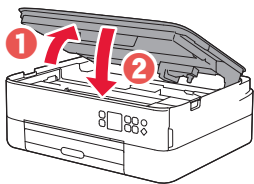
2. Entfernen des Verpackungsmaterials



- 1 Entfernen und entsorgen Sie das gesamte Verpackungsmaterial sowie das orangefarbene Kleband.
- 2 Öffnen Sie das Scan-Modul/die Abdeckung, entfernen und entsorgen Sie das orangefarbene Kleband sowie das Schutzmaterial aus dem Inneren.



- 3 Schließen Sie das Scan-Modul/die Abdeckung.
 - Öffnen Sie das Scan-Modul/die Abdeckung vollständig und schließen Sie es/sie dann wieder.



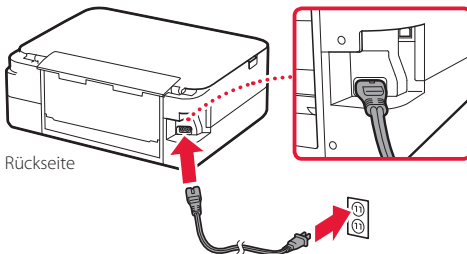
⚠ Vorsicht

Passen Sie auf Ihre Finger auf.

3. Einschalten des Druckers



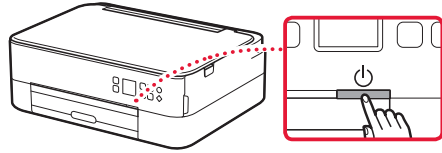
- 1 Schließen Sie das Netzkabel an.



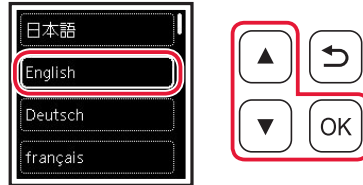
»»» Wichtig

Schließen Sie zum jetzigen Zeitpunkt keine weiteren Kabel an.

- 2 Drücken Sie die Taste **EIN (ON)**.



- 3 Verwenden Sie die Tasten **▲**, **▼** und **OK**, um eine Sprache auszuwählen.



- 4 Drücken Sie die Taste **OK**.



»»» Wichtig

Scannen Sie den QR-Code für ein Videolernprogramm zum Einrichtungsverfahren.

- 5 Verwenden Sie die Tasten **▲** und **▼**, um Inhalte auf dem Bildschirm zu überprüfen, und drücken Sie anschließend die Taste **OK**.

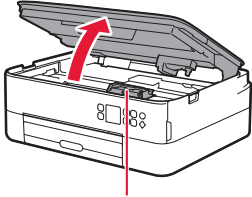


Einrichten des Druckers

4. Einsetzen der FINE-Patronen



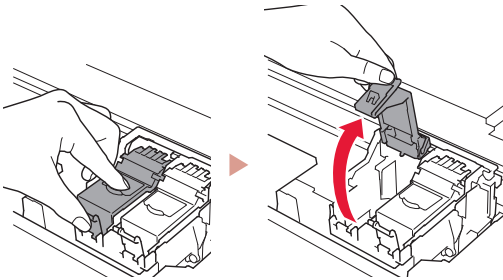
1 Öffnen Sie das Scan-Modul/die Abdeckung.



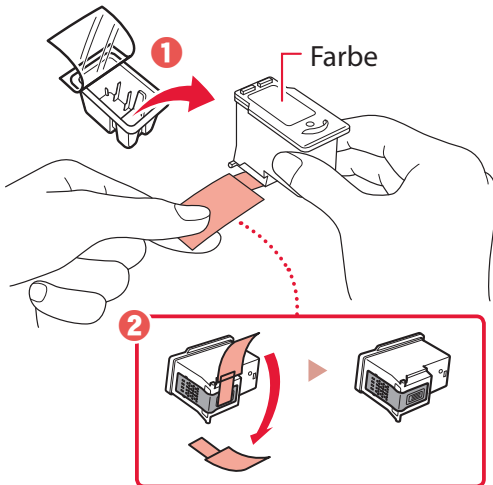
⚠ Vorsicht

Berühren Sie die FINE-Patronen-Halterung nicht, solange sie sich bewegt.

2 Drücken und öffnen Sie die Verriegelung der Tintenpatronen auf der linken Seite.

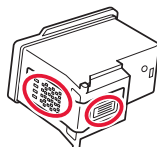


3 Nehmen Sie die farbige FINE-Patrone aus dem Behälter und entfernen Sie das Schutzband.

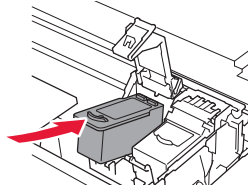


Wichtig

- Berühren Sie nicht die Tinte auf dem Schutzband. Ihre Hände oder Objekte in der Nähe könnten dadurch verschmutzt werden.
- Berühren Sie nicht die in der Abbildung gezeigten Bereiche. Andernfalls druckt der Drucker möglicherweise nicht richtig.

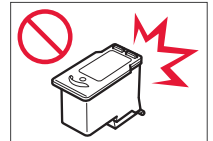


4 Setzen Sie die farbige FINE-Patrone in die FINE-Patronen-Halterung ein.

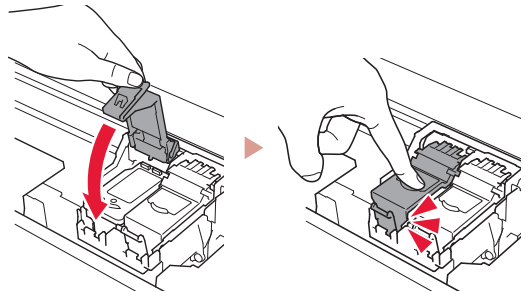


Wichtig

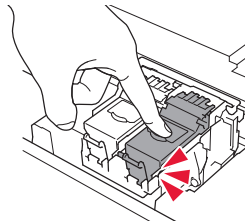
Stoßen Sie mit der FINE-Patrone nirgends an. Dies könnte zu einer Fehlfunktion führen.



5 Drücken Sie die Verriegelung der Tintenpatronen fest nach unten, bis sie einrastet, um diese vollständig zu schließen.

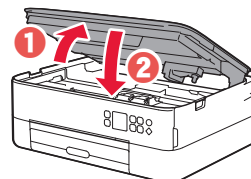


6 Wiederholen Sie die Schritte 2 bis 5 und setzen Sie auch die schwarze FINE-Patrone auf der rechten Seite ein.



7 Schließen Sie das Scan-Modul/die Abdeckung.

- Der Drucker wird initialisiert.



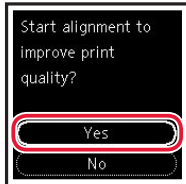
⚠ Vorsicht

Passen Sie auf Ihre Finger auf.

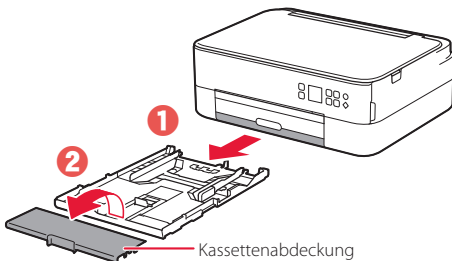
5. Einlegen von Papier



1 Drücken Sie die Taste **OK**.

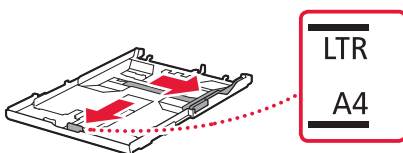


2 Entnehmen Sie die Kassette aus dem Drucker und entfernen Sie die Kassettenabdeckung.



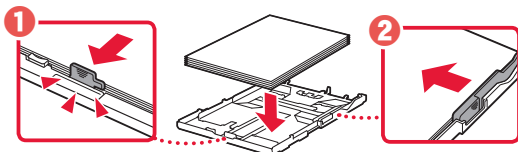
3 Schieben Sie die Papierführungen auseinander.

- Schieben Sie die rechte Papierführung an die rechte Kante. Richten Sie die vordere Papierführung an der Markierung für Letter oder A4 aus.

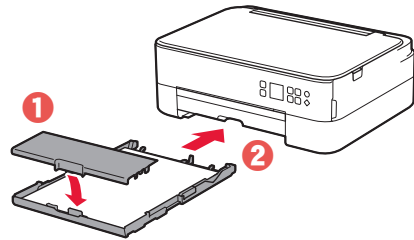


4 Legen Sie Papier ein.

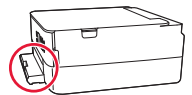
- Legen Sie 2 oder mehr Blatt Normalpapier des Formats Letter oder A4 mit der bedruckbaren Seite nach unten ein.
- Schieben Sie das Papier gegen die vordere Papierführung und richten Sie die rechte Papierführung an der Breite des Papiers aus.



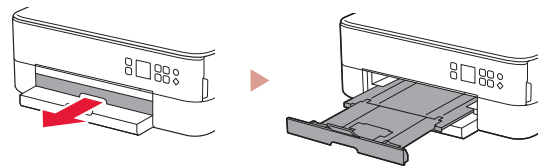
5 Bringen Sie die Kassettenabdeckung an und setzen Sie die Kassette wieder ein.



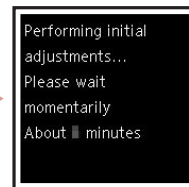
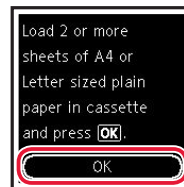
- Sehen Sie es sich von der Seite an und stellen Sie sicher, dass es der Abbildung entspricht.



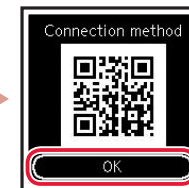
6 Ziehen Sie das Papierausgabefach heraus.



7 Drücken Sie die Taste **OK**.



8 Drücken Sie die Taste **OK**.



»»» Wichtig

Scannen Sie den QR-Code für ein Videolehrprogramm zum Einrichtungsverfahren.

9 Überprüfen Sie, ob der folgende Bildschirm angezeigt wird.



Wenn Sie den Drucker ohne Anschluss weiterer Geräte verwenden, ist die Einrichtung nun abgeschlossen.

Mit welchem Gerät stellen Sie eine Verbindung her?



Computer



Computer und
Smartphone



Smartphone



6-a

Herstellen einer Verbindung mit einem Computer


Wenn Sie mehrere Computer verwenden, führen Sie diese Schritte auf jedem Computer aus.



- 1 Greifen Sie von einem Computer aus auf die Canon-Website zu.

<https://ij.start.canon>

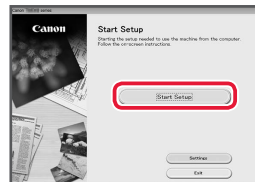


- 2 Wählen Sie  **Einrichten** aus.
- 3 Geben Sie den Modellnamen Ihres Druckers ein und klicken Sie auf **Los**.
- 4 Klicken Sie auf **Start**.
- 5 Klicken Sie auf **Wenn Sie Ihren Drucker bereits vorbereitet haben, wechseln Sie zu Verbindung herstellen**.

»»» Hinweis

Die folgenden Schritte gelten für Benutzer von Windows (ausgenommen Windows 10 in S mode) und Benutzer von macOS. Wenn Sie ein anderes Betriebssystem verwenden, fahren Sie mit der Einrichtung fort, indem Sie stattdessen die Anweisungen auf dem Bildschirm befolgen.

- 6 Klicken Sie auf **Herunterladen**.
- 7 Führen Sie die heruntergeladene Datei aus.
- 8 Klicken Sie auf **Setup starten (Start Setup)**.



- 9 Befolgen Sie die Anweisungen auf dem Bildschirm.
 - Diese Verfahren können einige Zeit dauern.
 - Um auch eine Verbindung mit einem Smartphone herzustellen, lesen Sie „6-b. Herstellen einer Verbindung mit einem Smartphone“ auf Seite 5.

Verwenden der Installations-CD-ROM für Windows

Doppelklicken Sie in der CD-ROM auf **EasySetup.exe** und fahren Sie mit Schritt 3 fort. Wenn Sie keinen Internetzugang haben, öffnen Sie den Ordner **win** auf der CD-ROM und doppelklicken Sie auf **SETUP.exe**. Dadurch wird der Druckertreiber installiert.

6-b

Herstellen einer Verbindung mit einem Smartphone

Wenn Sie mehrere Smartphones verwenden, führen Sie diese Schritte auf jedem Smartphone aus.



Bereiten Sie Folgendes vor, bevor Sie beginnen.

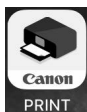
- 1 Aktivieren Sie die Wi-Fi-Einstellung auf Ihrem Smartphone.
- 2 Stellen Sie eine Verbindung zwischen Ihrem Smartphone und dem Wireless Router her (wenn Sie über einen Wireless Router verfügen).
Weitere Informationen finden Sie in den Handbüchern zu Ihrem Smartphone und dem Wireless Router.

1 Installieren Sie die App „Canon PRINT Inkjet/SELPHY“ auf Ihrem Smartphone.

- Scannen Sie den QR-Code auf der rechten Seite, um die Canon-Website aufzurufen, und laden Sie dann die App herunter.



2 Öffnen Sie die installierte App.



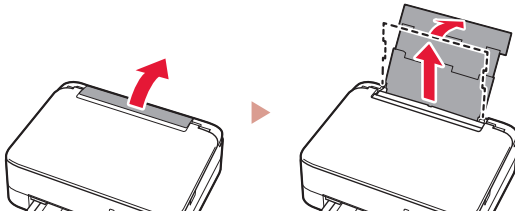
3 Befolgen Sie die Anweisungen auf dem App-Bildschirm, um Ihren Drucker hinzuzufügen.

Sobald Sie Ihren Drucker hinzugefügt haben, können Sie über Ihr Smartphone drucken.
Informationen zum Drucken von Fotos finden Sie unter „Einlegen von Fotopapier“ auf Seite 6.

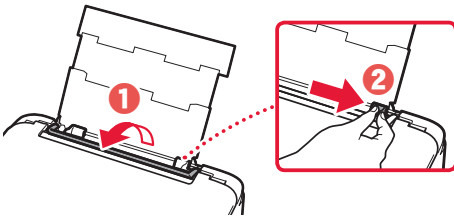
Einlegen von Fotopapier

Fotopapier kann nur in das hintere Fach eingelegt werden.

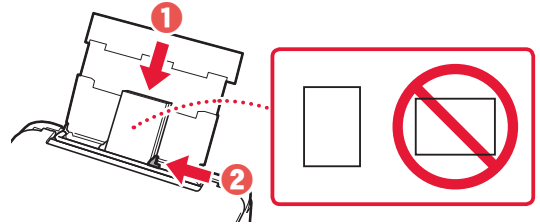
- 1 Öffnen Sie die Abdeckung des hinteren Fachs und ziehen Sie die Papierstütze heraus.



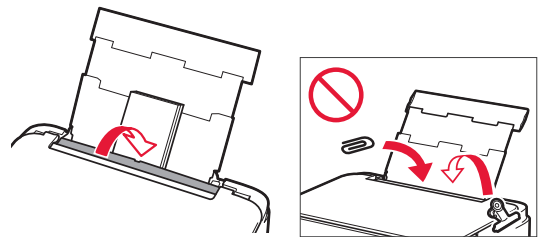
- 2 Öffnen Sie die Abdeckung für den Einzugschacht und schieben Sie die rechte Papierführung ganz nach rechts.



- 3 Legen Sie mehrere Blätter Fotopapier mit der bedruckbaren Seite nach oben ein und schieben Sie die seitliche Papierführung gegen die Kante des Papierstapels.

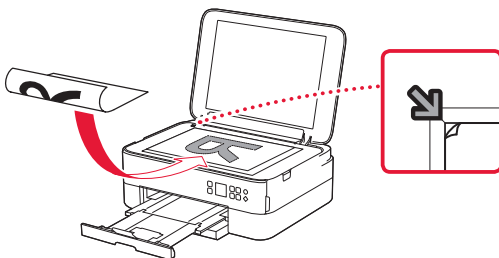


- 4 Schließen Sie die Abdeckung für den Einzugschacht.
 - Befolgen Sie die Anweisungen auf dem Bildschirm, um Informationen für das eingelegte Papier festzulegen.

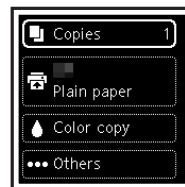


Kopieren

- 1 Schalten Sie den Drucker ein.
- 2 Legen Sie Normalpapier des Formats Letter oder A4 ein.
- 3 Öffnen Sie die Vorlagenabdeckung und legen Sie das Dokument mit der bedruckbaren Seite nach unten auf die Auflage. Richten Sie das Dokument an der Ausrichtungsmarkierung (↘) aus.



- 4 Schließen Sie die Vorlagenabdeckung.
- 5 Drücken Sie die Taste **OK**.
- 6 Wählen Sie **Kopiereinstellungen (Copy settings)** aus und drücken Sie dann auf die Taste **OK**.
- 7 Legen Sie die Druckinformationen mit den Tasten ▲, ▼ und **OK** fest.

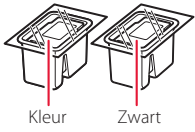


- 8 Drücken Sie die Taste **Start**.

De printer instellen

1. Inhoud van de doos

● FINE-cartridges

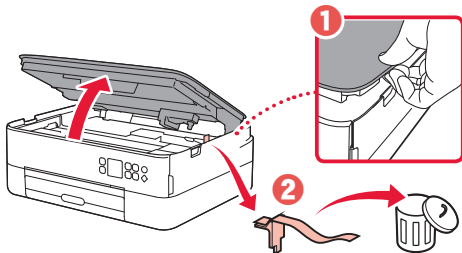


- Netsnoer
- Installatie-cd-rom voor Windows
- Veiligheidsinformatie en belangrijke informatie
- Aan de Slag-gids (deze handleiding)

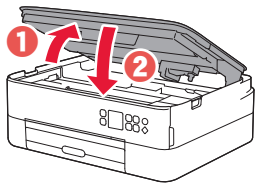
2. Verpakkingsmateriaal verwijderen



- 1 Verwijder het verpakkingsmateriaal en de oranje tape en gooi het weg.
- 2 Open de scaneenheid / klep, verwijder de oranje tape en het beschermende materiaal erin en gooi het weg.



- 3 Sluit de scaneenheid / klep.
 - Open de scaneenheid / klep volledig en sluit deze vervolgens.

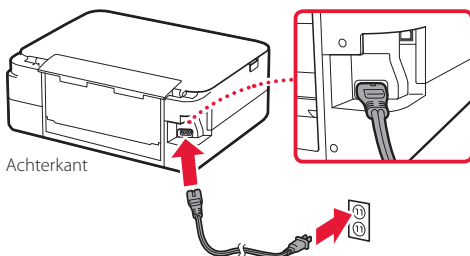


⚠ Let op
Kijk uit met uw vingers.

3. De printer inschakelen

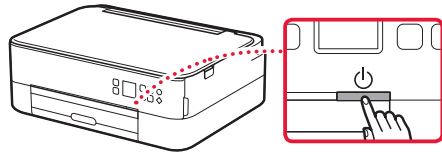


- 1 Sluit het netsnoer aan.

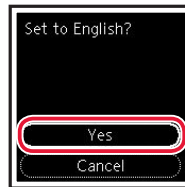
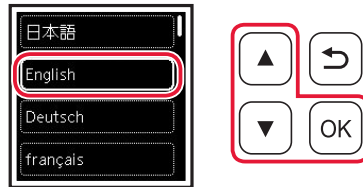


►►► **Belangrijk**
Sluit op dit moment nog geen andere kabels aan.

- 2 Druk op de knop **AAN (ON)**.



- 3 Gebruik de knoppen ▲, ▼ en **OK** om een taal te selecteren.



- 4 Druk op de knop **OK**.



►►► **Belangrijk**

Scan de QR-code voor een videozelfstudie van de installatieprocedure.

- 5 Gebruik de knoppen ▲ en ▼ om de inhoud op het scherm te controleren en druk vervolgens op de knop **OK**.

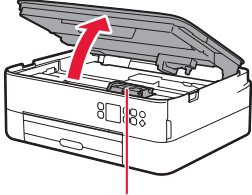


De printer instellen

4. De FINE-cartridges installeren



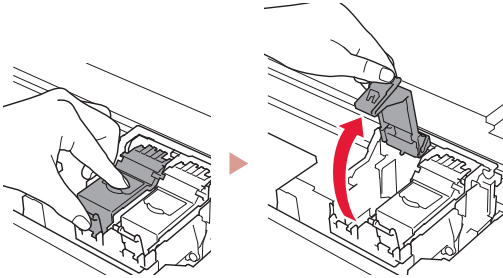
1 Open de scaneenheid / klep.



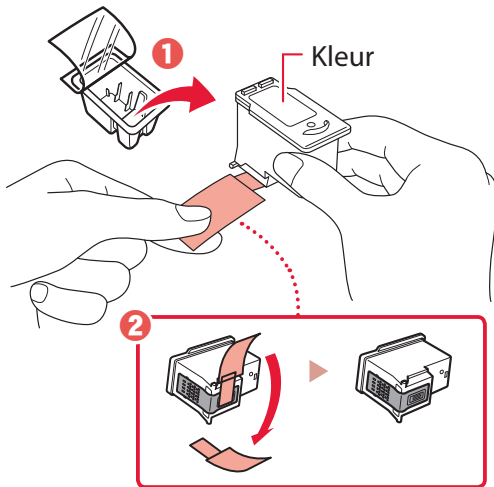
⚠ Let op

Raak de FINE-cartridgehouder niet aan totdat deze stopt met bewegen.

2 Knijp in het sluitklepje van de inktcartridge aan de linkerzijde en open het.

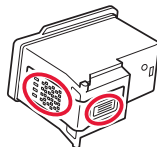


3 Haal de FINE-cartridge (kleur) uit de verpakking en verwijder de beschermende tape.

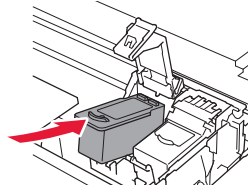


»»» Belangrijk

- Raak de inkt op de beschermende tape niet aan. Deze kan vlekken veroorzaken op uw handen of voorwerpen in de buurt.
- Raak de aangegeven gebieden in de afbeelding niet aan. De printer kan anders mogelijk niet correct afdrukken.

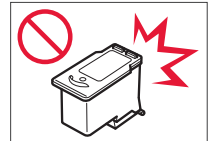


4 Plaats de FINE-cartridge (kleur) in de FINE-cartridgehouder.

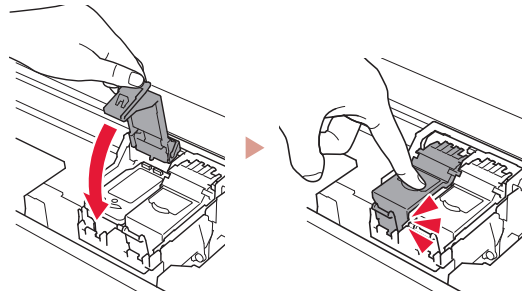


»»» Belangrijk

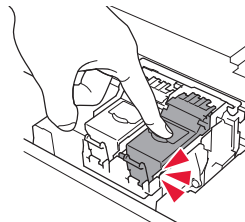
Stoot niet tegen de FINE-cartridge. Als u dat wel doet, kan dit leiden tot defecten.



5 Duw het sluitklepje van de inktcartridge stevig omlaag totdat dit op zijn plaats klikt en volledig is gesloten.

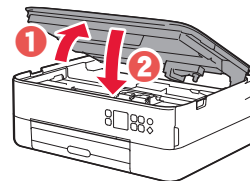


6 Herhaal stap 2 tot en met 5 om ook de zwarte FINE-cartridge te plaatsen, aan de rechterkant.



7 Sluit de scaneenheid / klep.

- De initialisatie van de printer wordt gestart.



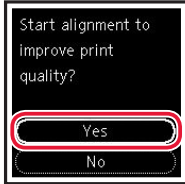
⚠ Let op

Kijk uit met uw vingers.

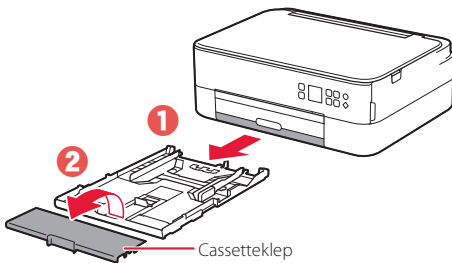
5. Papier plaatsen



1 Druk op de knop **OK**.

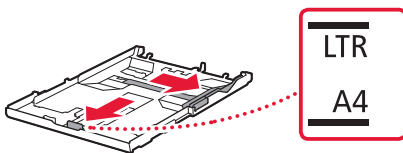


2 Verwijder de cassette uit de printer en verwijder de cassetteklep.



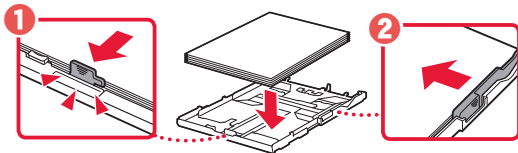
3 Schuif de papiergeleiders uit elkaar.

- Schuif de rechterpapiergeleider naar de rechterrand. Lijn de voorste papiergeleider uit met de markering Letter of A4.

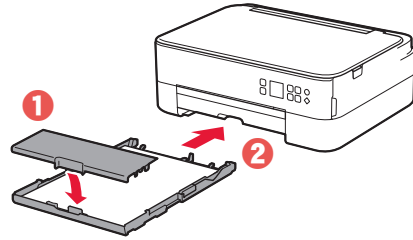


4 Plaats papier.

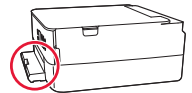
- Plaats 2 of meer vellen normaal papier van Letter- of A4-formaat met de afdrukzijde omlaag.
- Plaats het papier tegen de voorste papiergeleider en lijn de rechterpapiergeleider uit met de breedte van het papier.



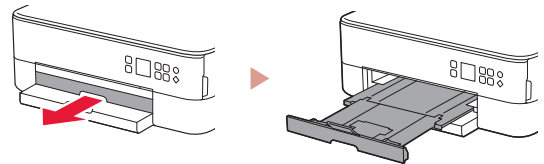
5 Bevestig de cassetteklep en plaats de cassette terug.



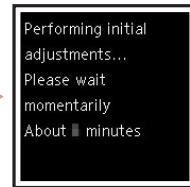
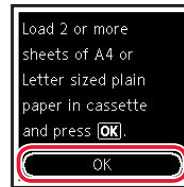
- Kijk vanaf de zijkant om te controleren of het eruitziet zoals in de afbeelding.



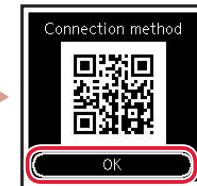
6 Trek de papieruitvoerlade uit.



7 Druk op de knop **OK**.



8 Druk op de knop **OK**.



»»» **Belangrijk**

Scan de QR-code voor een videozelfstudie van de installatieprocedure.

9 Controleer of het volgende scherm verschijnt.



Als u de printer wilt gebruiken zonder deze met andere apparaten te verbinden, is de installatie nu voltooid.

Met welk apparaat maakt u verbinding?



Computer



Computer en
smartphone



Smartphone

6-a

Verbinden met een computer

Als u meerdere computers gebruikt, voert u deze stappen uit op elke computer.

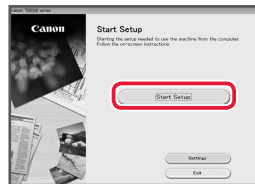


- 1 Ga naar de Canon-website op een computer.
 
- 2 Selecteer  **Installatie**.
- 3 Voer de modelnaam van de printer in en klik op **Ga**.
- 4 Klik op **Start**.
- 5 Klik op **Als u uw printer al hebt voorbereid, gaat u naar Verbinden**.

»»» Opmerking

De volgende stappen zijn bedoeld voor gebruikers van Windows (behalve Windows 10 in S mode) en macOS. Voor andere besturingssystemen gaat u verder met de installatie door in plaats daarvan de instructies op het scherm uit te voeren.

- 6 Klik op **Downloaden**.
- 7 Voer het gedownloadde bestand uit.
- 8 Klik op **Beginnen met instellen (Start Setup)**.



- 9 Volg de instructies op het scherm.
 - Deze handelingen kunnen enige tijd duren.
 - Als u ook verbinding wilt maken met een smartphone, raadpleegt u "6-b. Verbinden met een smartphone" op pagina 5.

De installatie-cd-rom gebruiken voor Windows

Dubbelklik op **EasySetup.exe** vanaf de cd-rom en ga verder vanaf stap 3. Als u geen internetverbinding hebt, opent u de map **win** van de cd-rom en dubbelklikt u op **SETUP.exe**. Hiermee wordt het printerstuurprogramma geïnstalleerd.

6-b

Verbinden met een smartphone

Als u meerdere smartphones gebruikt, voert u deze stappen uit op elke smartphone.



Bereid het volgende voor voordat u begint.

- 1 Schakel de Wi-Fi-instelling op uw smartphone in.
- 2 Verbind uw smartphone met de draadloze router (als u een draadloze router gebruikt).
Raadpleeg de handleiding van uw smartphone en draadloze router voor meer informatie.

1 Installeer de app "Canon PRINT Inkjet/SELPHY" op uw smartphone.

- Scan de QR-code rechts om naar de Canon-website te gaan en de app te downloaden.



2 Open de geïnstalleerde app.



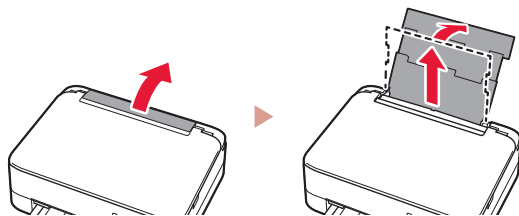
3 Volg de instructies op het scherm in de app om de printer toe te voegen.

Nadat u de printer hebt toegevoegd, kunt u afdrukken vanaf uw smartphone.
Als u foto's wilt afdrukken, raadpleegt u "Fotopapier plaatsen" op pagina 6.

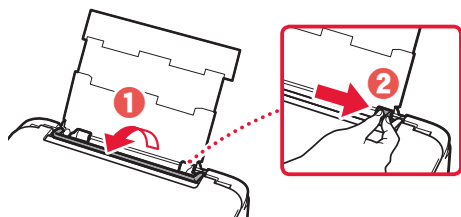
Fotopapier plaatsen

Fotopapier kan alleen in de achterste lade worden geplaatst.

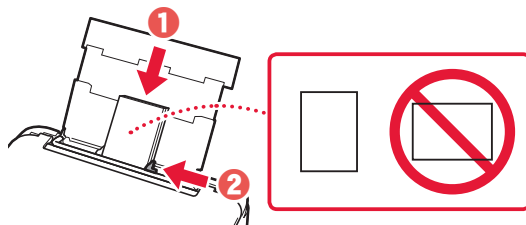
- 1 Open de klep van de achterste lade en trek de papiersteun uit.



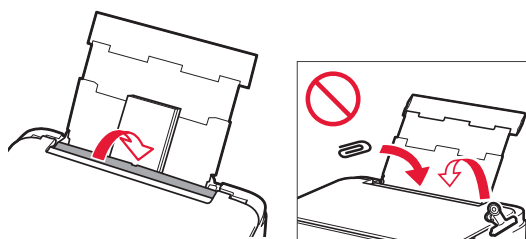
- 2 Open het klepje over de invoersleuf en schuif de papiergeleider aan de rechterkant helemaal naar rechts.



- 3 Plaats meerdere vellen fotopapier met de afdrukszijde omhoog en schuif de papiergeleider aan de zijkant tegen de rand van de stapel papier.

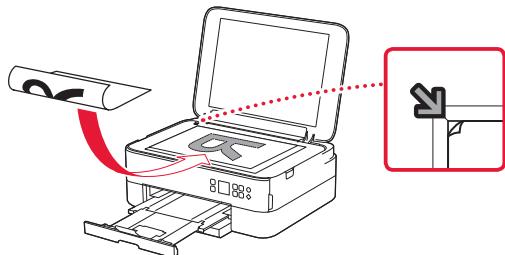


- 4 Sluit het klepje over de invoersleuf.
 - Volg de instructies op het scherm om informatie over het geplaatste papier in te stellen.



Kopiëren

- 1 Zet de printer aan.
- 2 Plaats normaal papier van Letter- of A4-formaat.
- 3 Open de documentklep en plaats het document met de bovenzijde omlaag op de plaat. Lijn het document uit met de positiemarkering (↙).



- 4 Sluit de documentklep.
- 5 Druk op de knop **OK**.
- 6 Selecteer **Kopieerinstellingen (Copy settings)** en druk vervolgens op de knop **OK**.
- 7 Geef afdrুকinstellingen op met behulp van de knoppen **▲**, **▼** en **OK**.

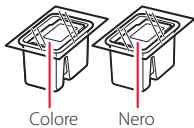


- 8 Druk op de knop **Starten (Start)**.

Impostazione della stampante

1. Contenuto della scatola

● Cartucce FINE

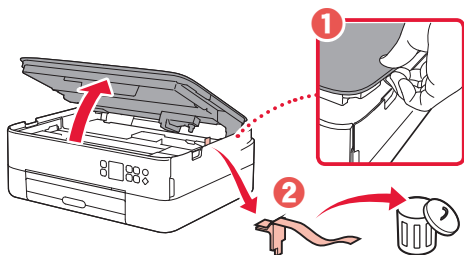


- Cavo di alimentazione
- CD-ROM di installazione per Windows
- Informazioni importanti e sulla sicurezza
- Guida Rapida (questo manuale)

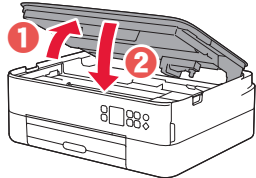
2. Rimozione del materiale da imballaggio



- 1 Rimuovere e disfarsi di eventuale materiale da imballaggio e del nastro arancione.
- 2 Aprire l'unità di scansione / coperchio, rimuovere e disfarsi del nastro arancione e del materiale di protezione all'interno.



- 3 Chiudere l'unità di scansione / coperchio.
 - Aprire completamente l'unità di scansione / coperchio, quindi chiuderla.

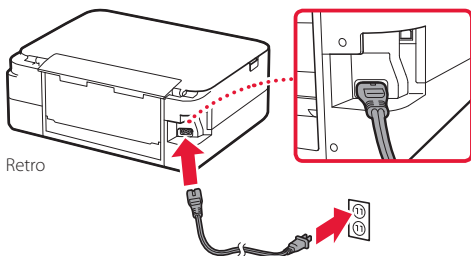


⚠ Attenzione
Fare attenzione alle dita.

3. Accensione della stampante



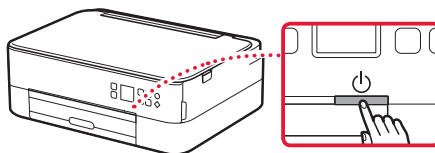
- 1 Collegare il cavo di alimentazione.



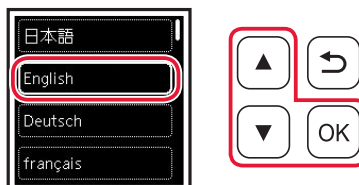
»»» Importante

In questa fase, non collegare altri cavi.

- 2 Premere il pulsante **ON**.



- 3 Utilizzare i pulsanti **▲**, **▼** e **OK** per selezionare una lingua.



- 4 Premere il pulsante **OK**.



»»» Importante

Eseguire la scansione del codice QR per un video tutorial della procedura di impostazione.

- 5 Utilizzare i pulsanti **▲** e **▼** per controllare il contenuto sullo schermo e premere il pulsante **OK**.

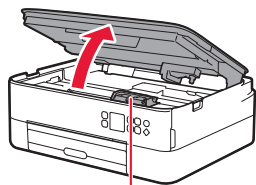


Impostazione della stampante

4. Installazione delle cartucce FINE



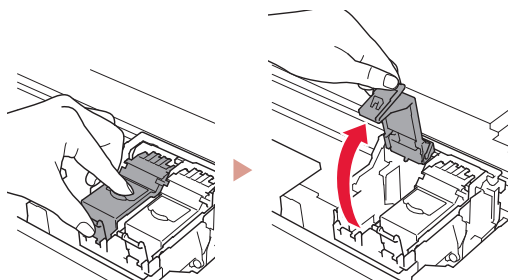
1 Aprire l'unità di scansione / coperchio.



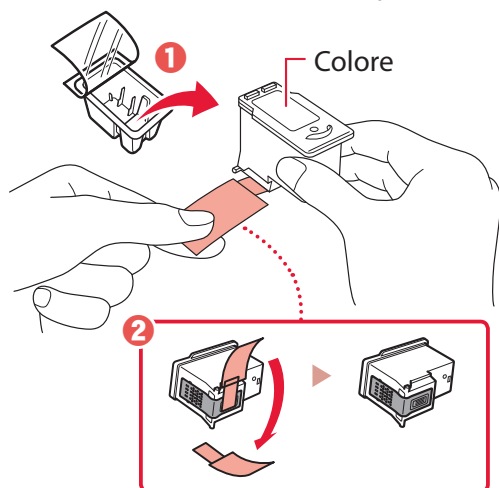
⚠ Attenzione

Non toccare il supporto cartuccia FINE fino a che non si ferma.

2 Prendere con due dita e aprire il coperchio di bloccaggio della cartuccia di inchiostro sul lato sinistro.

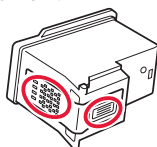


3 Rimuovere la cartuccia FINE del colore dal contenitore e rimuovere il nastro protettivo.

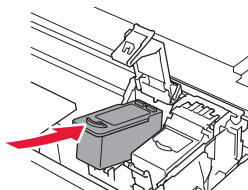


»»» Importante

- Non toccare l'inchiostro presente sul nastro protettivo. Potrebbe macchiare le mani o altri oggetti vicini.
- Non toccare le aree mostrate nella figura. Altrimenti, la stampante potrebbe non stampare correttamente.



4 Installare la cartuccia FINE del colore nel supporto cartuccia FINE.

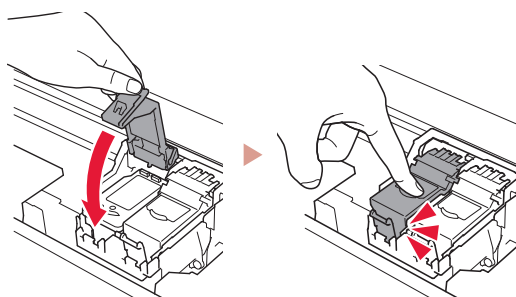


»»» Importante

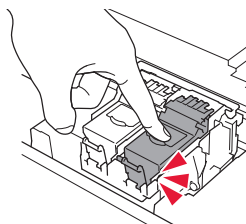
Non scuotere la cartuccia FINE. Ciò potrebbe causare un malfunzionamento.



5 Spingere con fermezza verso il basso il coperchio di bloccaggio della cartuccia di inchiostro finché non scatta in posizione per chiuderlo completamente.

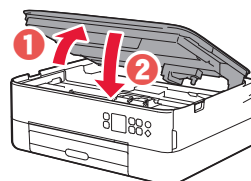


6 Ripetere i passi da 2 a 5 e installare anche la cartuccia FINE del nero sul lato destro.



7 Chiudere l'unità di scansione / coperchio.

- Verrà avviata l'inizializzazione della stampante.



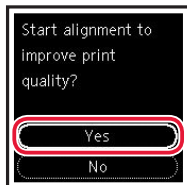
⚠ Attenzione

Fare attenzione alle dita.

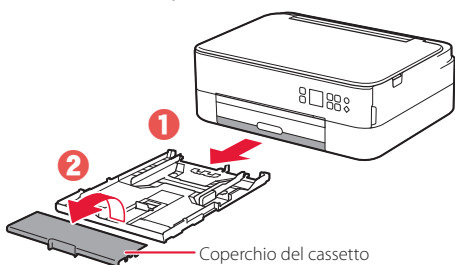
5. Caricamento della carta



1 Premere il pulsante **OK**.

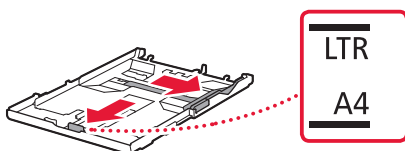


2 Rimuovere il cassetto dalla stampante, quindi rimuovere il coperchio del cassetto.



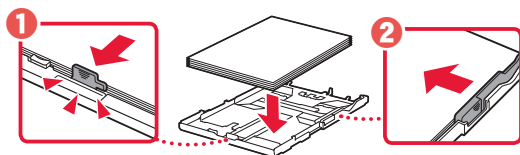
3 Far scorrere le guide della carta.

- Far scorrere la guida della carta di destra verso il margine destro. Allineare la guida della carta anteriore con il segno Letter o A4.

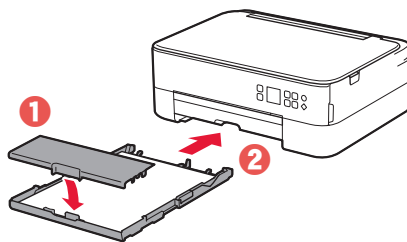


4 Caricare la carta.

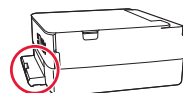
- Caricare 2 o più fogli di carta comune in formato Letter o A4 con il lato di stampa rivolto verso il basso.
- Posizionare la carta contro la guida della carta anteriore e allineare la guida della carta di destra alla larghezza della carta.



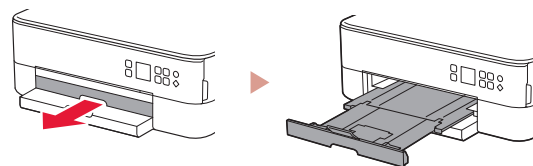
5 Collegare il coperchio del cassetto e reinserire il cassetto.



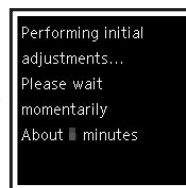
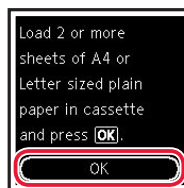
- Guardarlo lateralmente per assicurarsi che assomiglia al disegno.



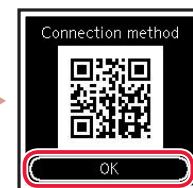
6 Estrarre il vassoio di uscita della carta.



7 Premere il pulsante **OK**.



8 Premere il pulsante **OK**.



»»» **Importante**

Eeguire la scansione del codice QR per un video tutorial della procedura di impostazione.

9 Verificare che venga visualizzata la schermata seguente.



Se si intende utilizzare la stampante senza connettersi ad altre periferiche, l'impostazione è ora completa.

Quale periferica si sta connettendo?



Computer



Computer e
smartphone



Smartphone



6-a

Connessione a un computer


Se si utilizzano più computer, eseguire questi passaggi su ciascun computer.



- 1 Accedere al sito Web di Canon da un computer.

<https://ij.start.canon>

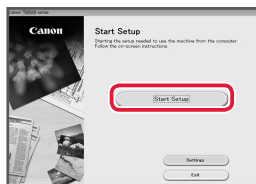


- 2 Selezionare  **Impostazione**.
- 3 Immettere il nome del modello della stampante e fare clic su **Vai**.
- 4 Fare clic su **Avvio**.
- 5 Fare clic su **Se la stampante è già preparata, connettersi**.

»»» Nota

Le seguenti procedure sono destinate agli utenti Windows (tranne Windows 10 in S mode) e macOS. Per gli altri sistemi operativi, continuare l'impostazione seguendo le istruzioni visualizzate.

- 6 Fare clic su **Scarica**.
- 7 Eseguire il file scaricato.
- 8 Fare clic su **Avvia impostazione (Start Setup)**.



- 9 Seguire le istruzioni visualizzate sullo schermo.
 - Queste operazioni possono richiedere del tempo.
 - Per connettersi anche a uno smartphone, vedere "6-b. Connessione a uno smartphone" a pagina 5.

Utilizzo del CD-ROM di installazione per Windows

Fare doppio clic su **EasySetup.exe** nel CD-ROM, quindi continuare dal passo 3. Se non si dispone di una connessione Internet, aprire la cartella **win** nel CD-ROM e fare doppio clic su **SETUP.exe**. Verrà installato il driver della stampante.

6-b

Connessione a uno smartphone

Se si utilizzano più smartphone, eseguire questi passaggi su ciascuno smartphone.



Prima di iniziare, effettuare quanto segue.

- 1 Abilitare l'impostazione Wi-Fi sullo smartphone.
- 2 Connettere lo smartphone al router wireless (se si dispone di un router wireless).

Per ulteriori informazioni, fare riferimento ai manuali dello smartphone e del router wireless.

- 1 Installare l'app "Canon PRINT Inkjet/SELPHY" sullo smartphone.
 - Eseguire la scansione del codice QR sulla destra per accedere al sito Web di Canon e scaricare l'app.



- 2 Aprire l'app installata.



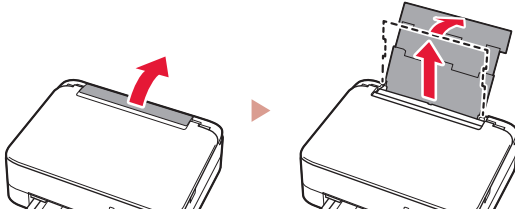
- 3 Per aggiungere la stampante, attenersi alle istruzioni visualizzate nell'app.

Una volta aggiunta la stampante, è possibile stampare dallo smartphone.
Per stampare foto, vedere "Caricamento della carta fotografica" a pagina 6.

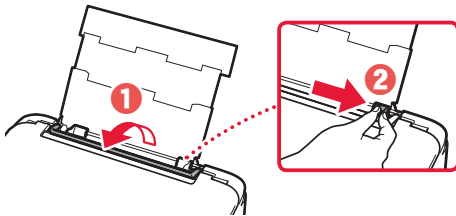
Caricamento della carta fotografica

La carta fotografica può essere caricata solo nel vassoio posteriore.

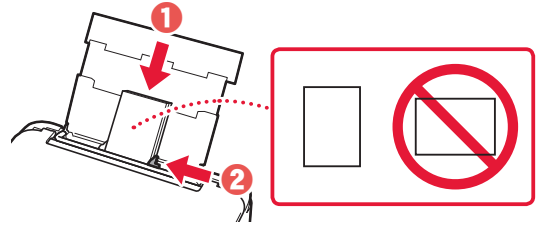
- 1 Aprire il coperchio del vassoio posteriore ed estendere il supporto per la carta.



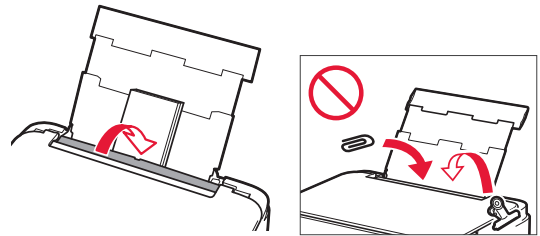
- 2 Aprire il coperchio dell'alimentatore manuale e far scorrere la guida della carta di destra verso l'estrema destra.



- 3 Caricare diversi fogli di carta fotografica con il lato di stampa rivolto verso l'alto e far scorrere la guida della carta laterale contro il bordo della risma di carta.

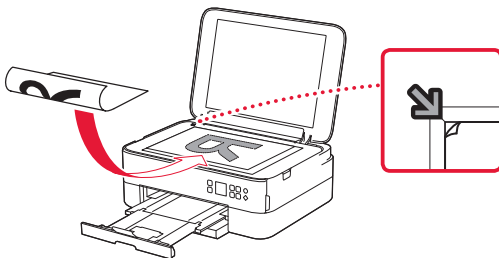


- 4 Chiudere il coperchio dell'alimentatore manuale.
 - Seguire le istruzioni visualizzate sullo schermo per impostare le informazioni per la carta caricata.



Copia

- 1 Accendere la stampante.
- 2 Caricare carta comune in formato Letter o A4.
- 3 Aprire il coperchio dei documenti e posizionare il documento rivolto verso il basso sul piano di lettura. Allineare il documento al segno di allineamento (↙).



- 4 Chiudere il coperchio dei documenti.
- 5 Premere il pulsante **OK**.
- 6 Selezionare **Copia impostazioni (Copy settings)**, quindi premere il pulsante **OK**.
- 7 Specificare le impostazioni di stampa utilizzando i pulsanti ▲, ▼ e **OK**.

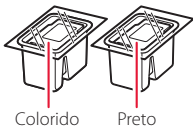


- 8 Premere il pulsante **Avvio (Start)**.

Configurando a impressora

1. Conteúdo da Caixa

● Cartuchos FINE

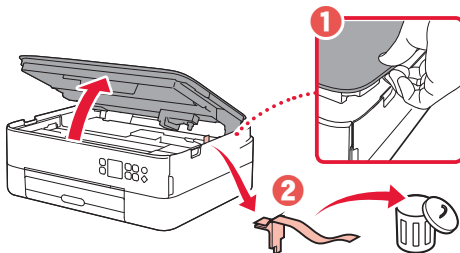


- Cabo de alimentação
- CD-ROM de instalação para Windows
- Informações Importantes e Sobre Segurança
- Para Começar (este manual)

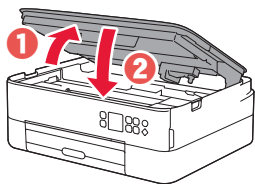
2. Removendo os materiais da embalagem



- 1 Remova e descarte quaisquer materiais de embalagem e a fita laranja.
- 2 Abra a unidade de digitalização/tampa, remova e descarte a fita laranja e o material de proteção que estão dentro.



- 3 Feche a unidade de digitalização/tampa.
 - Abra totalmente a unidade de digitalização/tampa e feche-a em seguida.

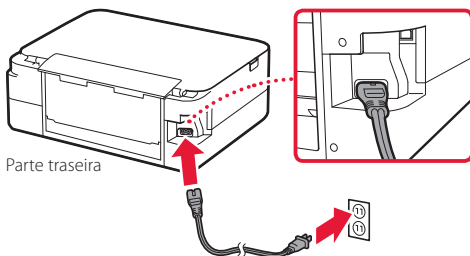


⚠ Cuidado
Preste atenção aos seus dedos.

3. Ligando a Impressora

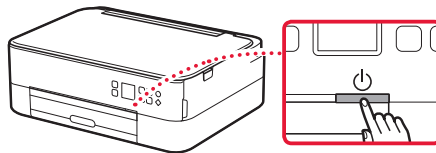


- 1 Conecte o cabo de alimentação.

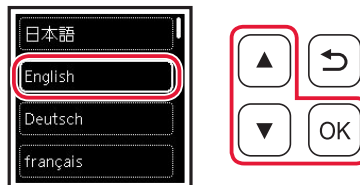


»»» Importante
Não conecte quaisquer outros cabos ainda.

- 2 Pressione o botão **ATIVADO (ON)**.



- 3 Use os botões **▲**, **▼** e **OK** para selecionar um idioma.



- 4 Pressione o botão **OK**.



»»» Importante

Leia o Código QR para um tutorial em vídeo do procedimento de configuração.

- 5 Use os botões **▲** e **▼** para conferir o conteúdo na tela, em seguida pressione o botão **OK**.

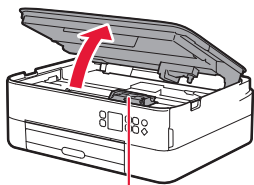


Configurando a impressora

4. Instalando os Cartuchos FINE



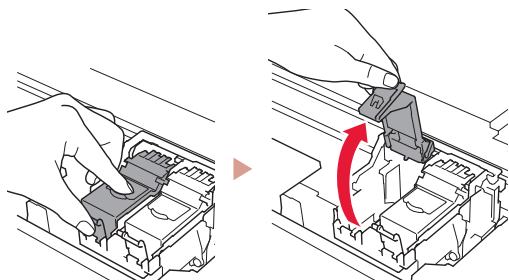
1 Abra a unidade de digitalização/tampa.



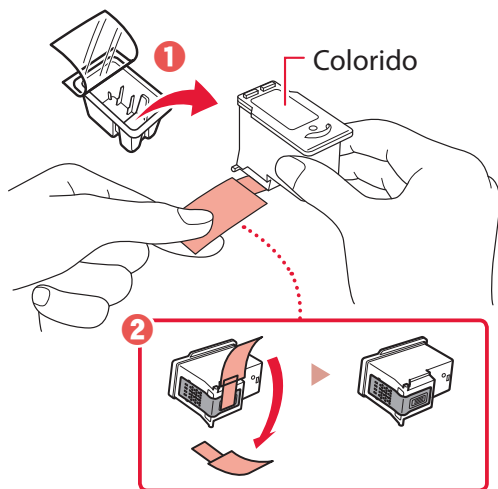
⚠ Cuidado

Não toque no suporte do cartucho FINE antes de ele parar de se mover.

2 Puxe e abra a tampa de fixação do cartucho de tinta no lado esquerdo.

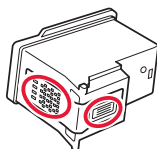


3 Remova o Cartucho FINE colorido do recipiente e remova a fita de proteção.

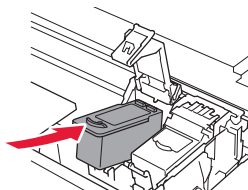


⚠ Importante

- Não toque na tinta na fita de proteção. Ela pode manchar suas mãos ou os objetos em volta.
- Não toque nas áreas mostradas na figura. Caso contrário, a impressora pode não imprimir corretamente.

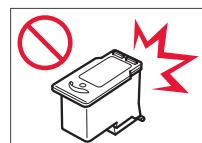


4 Coloque o Cartucho FINE colorido no suporte de cartucho FINE.

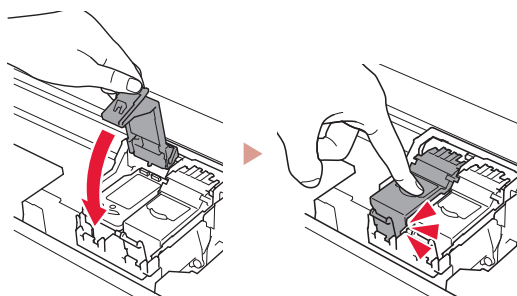


⚠ Importante

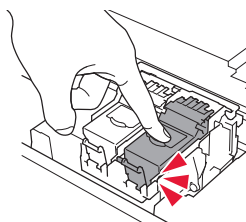
Não bata o cartucho FINE. Fazer isso pode causar problemas de funcionamento.



5 Empurre para baixo a tampa de fixação do cartucho de tinta firmemente até encaixar para fechá-la completamente.

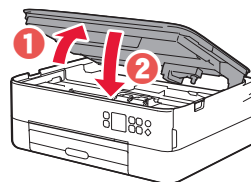


6 Repita as etapas 2 a 5 e instale também o cartucho FINE preto no lado direito.



7 Feche a unidade de digitalização/tampa.

- A impressora será inicializada.



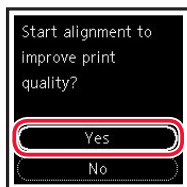
⚠ Cuidado

Preste atenção aos seus dedos.

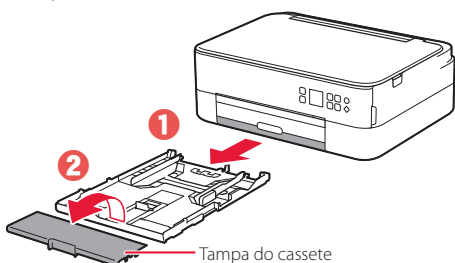
5. Colocando papel



1 Pressione o botão **OK**.

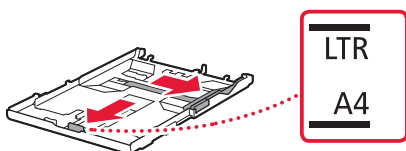


2 Remova o cassete da impressora e remova a tampa do cassete.



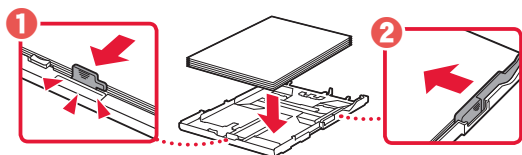
3 Deslize as guias do papel.

- Deslize a guia do papel direita até a borda direita. Alinhe a guia do papel frontal com a marcação Letter ou A4.

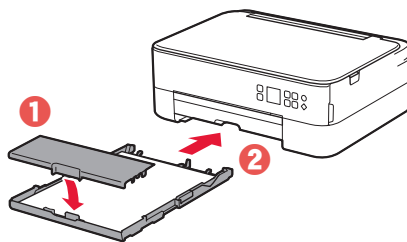


4 Coloque o papel.

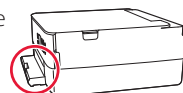
- Carregue 2 ou mais folhas de papel comum tamanho Letter ou A4 com o lado a ser impresso voltado para baixo.
- Coloque o papel na guia do papel frontal e alinhe a guia do papel direita com a largura do papel.



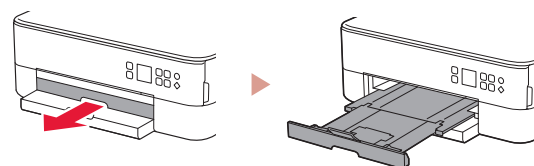
5 Coloque a tampa do cassete e substitua o cassete.



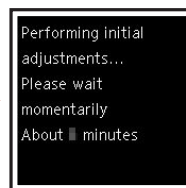
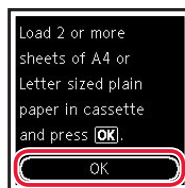
- Olhe pela lateral para confirmar se parece com o diagrama.



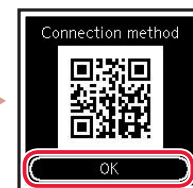
6 Puxe para fora a bandeja de saída do papel.



7 Pressione o botão **OK**.



8 Pressione o botão **OK**.



»»» **Importante**

Leia o Código QR para um tutorial em vídeo do procedimento de configuração.

9 Verifique se a tela a seguir aparece.



Se você for usar a impressora sem conectar nenhum outro dispositivo, a configuração está concluída.

Qual dispositivo você está conectando?



Computador



Computador
e smartphone



Smartphone

6-a

Conectando a um Computador

Se você estiver usando vários computadores, execute estas etapas em cada computador.



- 1 Acesse o site Canon de um computador.

<https://ij.start.canon>



- 2 Selecione  **Configurar**.

- 3 Insira o nome do modelo da sua impressora e clique em **Ir**.

- 4 Clique em **Iniciar**.

- 5 Clique em **Se você já tiver preparado a sua impressora, vá para Conectar**.

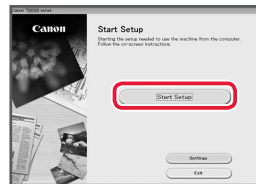
▶▶▶ Nota

As seguintes etapas são para Windows (exceto Windows 10 in S mode) e usuários do macOS. Para outros sistemas operacionais, continue a configuração seguindo as instruções na tela.

- 6 Clique em **Download**.

- 7 Execute o arquivo baixado.

- 8 Clique em **Iniciar configuração (Start Setup)**.



- 9 Siga as instruções na tela.

- Estas operações podem levar algum tempo.
- Para conectar a um smartphone, consulte "6-b. Conectando a um smartphone" na página 5.

Usando o CD-ROM de instalação para Windows

Clique duas vezes em **EasySetup.exe** no CD-ROM e, em seguida, continue da etapa 3. Se você não tiver uma conexão com a internet, abra a pasta **win** no CD-ROM e clique duas vezes em **SETUP.exe**. Isso instalará o driver da impressora.

6-b

Conectando a um smartphone

Se você estiver usando vários smartphones, execute estas etapas em cada smartphone.



Prepare o seguinte antes de iniciar.

- 1 Ative a configuração Wi-Fi no seu smartphone.
- 2 Conecte seu smartphone ao roteador sem fio (se você tiver um roteador sem fio).
Consulte os manuais do seu smartphone e do seu roteador sem fio para obter mais detalhes.

1 Instale o aplicativo "Canon PRINT Inkjet/SELPHY" no seu smartphone.

- Digitalize o código QR exibido à direita para acessar o site da Canon e fazer download do aplicativo.



2 Abra o aplicativo instalado.

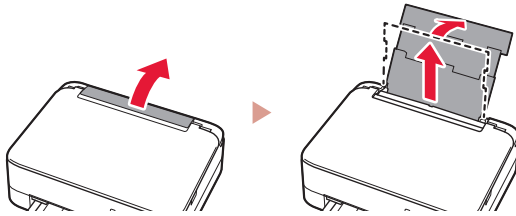
3 Siga as instruções na tela do aplicativo para adicionar sua impressora.

Depois que você adicionar a impressora, poderá imprimir a partir do smartphone.
Para imprimir fotos, consulte "Colocando Papel Fotográfico" na página 6.

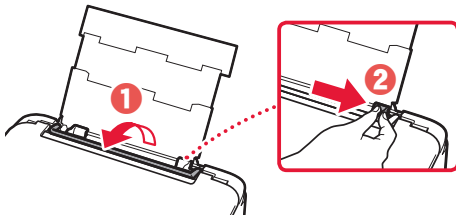
Colocando Papel Fotográfico

Papel fotográfico só pode ser carregado na bandeja traseira.

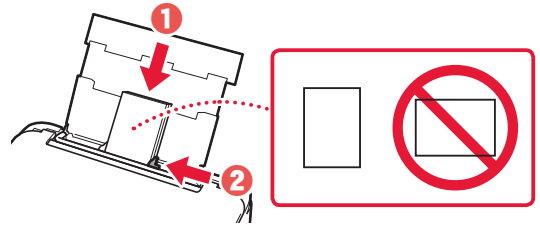
- 1 Abra a tampa da bandeja traseira e estenda o suporte de papel.



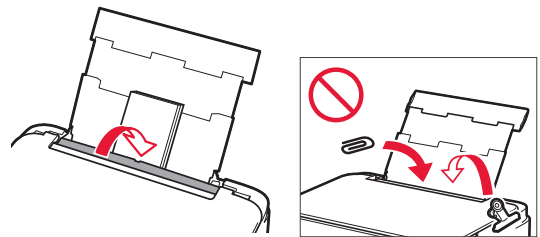
- 2 Abra a tampa do slot de alimentação e deslize a guia do papel do lado direito para a extrema direita.



- 3 Carregue várias folhas de papel fotográfico com o lado a ser impresso virado para cima e deslize a guia do papel em direção à borda da pilha de papel.

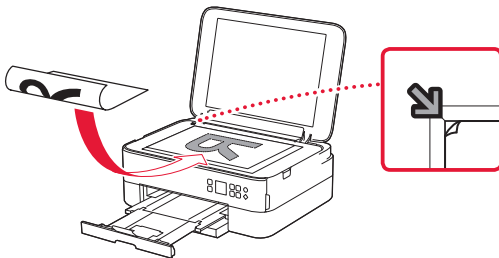


- 4 Feche a tampa do slot de alimentação.
 - Siga as instruções na tela para definir informações sobre o papel carregado.



Copiando

- 1 Ligue a Impressora.
- 2 Carregue o papel comum de tamanho A4 ou Carta.
- 3 Abra a tampa de documentos e coloque o documento voltado para baixo na exposição. Posicione o documento com a marca de alinhamento (↙).



- 4 Feche a tampa de documentos.
- 5 Pressione o botão **OK**.
- 6 Selecione **Copiar configurações (Copy settings)** e pressione o botão **OK**.
- 7 Especifique as configurações de impressão usando os botões ▲, ▼ e **OK**.

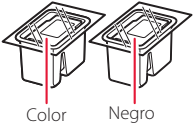


- 8 Pressione o botão **Iniciar (Start)**.

Instalación de la impresora

1. Contenido de la caja

● Cartuchos FINE

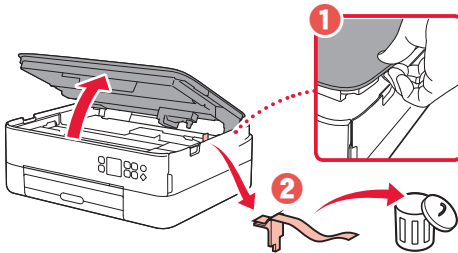


- Cable de alimentación
- CD-ROM de instalación para Windows
- Información de seguridad e información importante
- Guía de inicio (este manual)

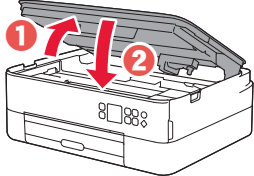
2. Retirar los materiales de protección



- 1 Retire y tire los materiales de protección y la cinta naranja.
- 2 Abra la cubierta/unidad de escaneado, retire y tire la cinta naranja y el material de protección que hay dentro.



- 3 Cierre la cubierta/unidad de escaneado.
 - Abra la cubierta/unidad de escaneado completamente y luego ciérrala.

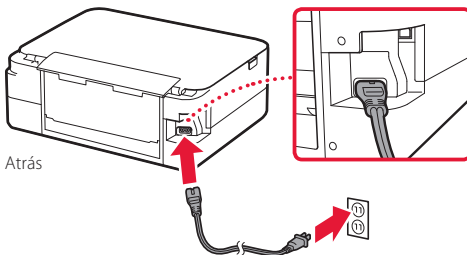


⚠ Precaución
Tenga cuidado con los dedos.

3. Encender la impresora

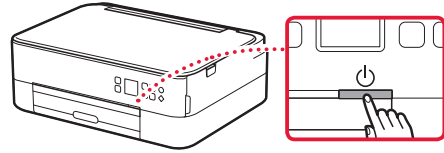


- 1 Conecte el cable de alimentación.

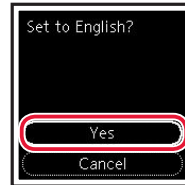
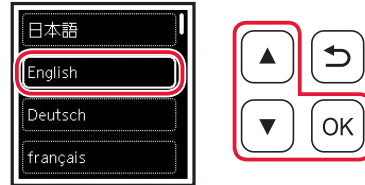


▶▶▶ Importante
En este momento, no conecte ningún otro cable.

- 2 Pulse el botón **ACTIVADO (ON)**.



- 3 Utilice los botones ▲, ▼ y **OK** para seleccionar un idioma.



- 4 Pulse el botón **OK**.



▶▶▶ **Importante**

Escanee el código QR para ver un tutorial en vídeo sobre el procedimiento de configuración.

- 5 Utilice los botones ▲ y ▼ para consultar el contenido en pantalla y, a continuación, pulse el botón **OK**.

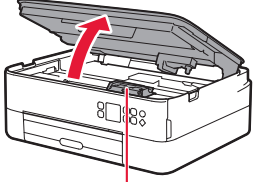


Instalación de la impresora

4. Instalar los cartuchos FINE



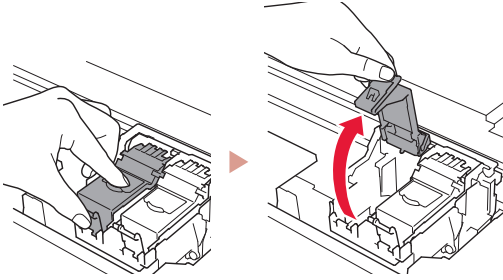
1 Abra la cubierta/unidad de escaneado.



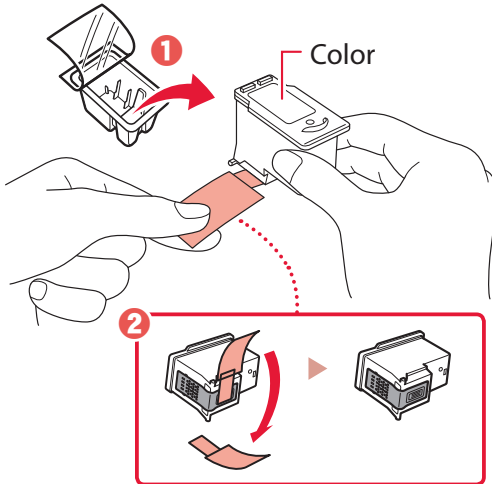
⚠ Precaución

No toque el soporte de cartucho FINE hasta que se detenga.

2 Pellizque y abra la tapa de bloqueo del cartucho de tinta del lado izquierdo.

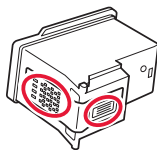


3 Retire el cartucho FINE de color del contenedor y retire la cinta protectora.

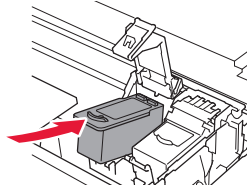


»»» Importante

- No toque la tinta de la cinta protectora. Podría manchar sus manos o los objetos que se encuentran a su alrededor.
- No toque las áreas que se muestran en la imagen. Si lo hace, puede que la impresora no imprima correctamente.

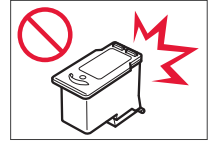


4 Coloque el cartucho FINE de color en el soporte de cartucho FINE.

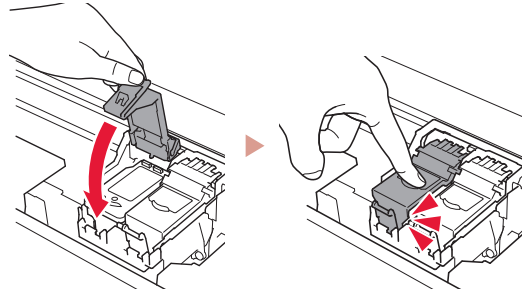


»»» Importante

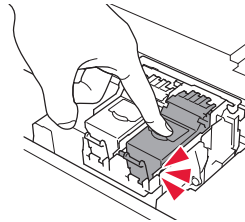
No golpee el cartucho FINE. Si se golpea, puede funcionar mal.



5 Empuje hacia abajo la tapa de bloqueo del cartucho de tinta firmemente hasta que encaje en su lugar para cerrarla por completo.

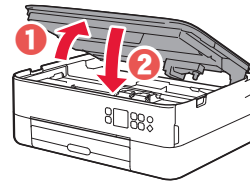


6 Repita los pasos del 2 al 5 e instale el cartucho FINE negro también en el lado derecho.



7 Cierre la cubierta/unidad de escaneado.

- La impresora comenzará a iniciarse.



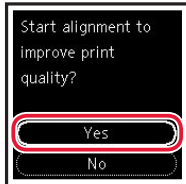
⚠ Precaución

Tenga cuidado con los dedos.

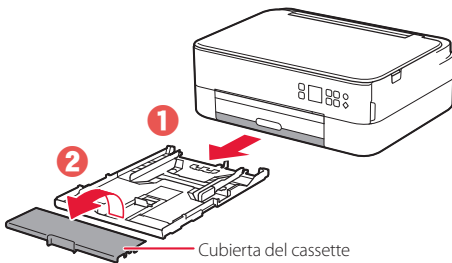
5. Carga del papel



1 Pulse el botón **OK**.

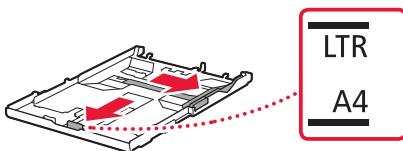


2 Retire el cassette de la impresora y retire la cubierta del cassette.



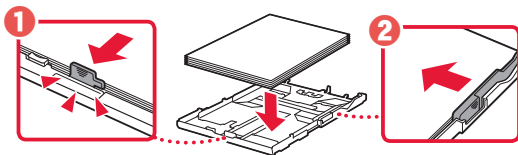
3 Separe las guías del papel deslizándolas.

- Deslice la guía del papel derecha hacia el borde derecho. Alinee la guía del papel frontal con la marca Carta o A4.

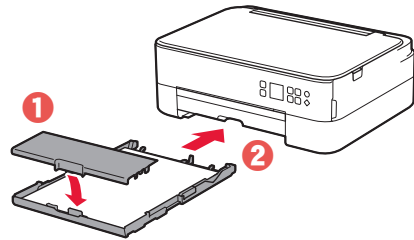


4 Cargue el papel.

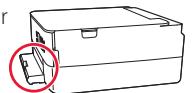
- Cargue 2 o más hojas de papel normal de tamaño Carta o A4 con el lado de impresión hacia abajo.
- Coloque el papel delante de la guía del papel frontal y alinee la guía del papel derecha con el ancho del papel.



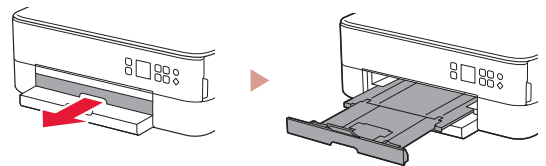
5 Coloque la cubierta del cassette e inserte el cassette.



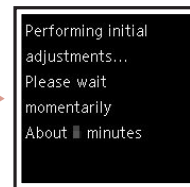
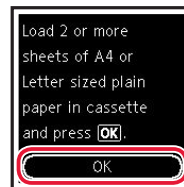
- Mírelo desde el lado para confirmar que está como en el diagrama.



6 Extraiga la bandeja de salida del papel.



7 Pulse el botón **OK**.



8 Pulse el botón **OK**.



»»» **Importante**

Escanee el código QR para ver un tutorial en vídeo sobre el procedimiento de configuración.

9 Compruebe que aparezca la siguiente pantalla.



Si va a utilizar la impresora sin conectar con ningún otro dispositivo, la configuración ya se ha completado.

¿Qué dispositivo va a conectar?



Ordenador



Ordenador y
teléfono inteligente



Teléfono inteligente

6-a

Conectar al ordenador

Si utiliza varios ordenadores, realice estos pasos en cada ordenador.



- 1 Acceda al sitio web de Canon desde un ordenador.

<https://ij.start.canon>



- 2 Seleccione  **Configurar**.

- 3 Escriba el nombre del modelo de su impresora y haga clic en **Ir**.

- 4 Haga clic en **Iniciar**.

- 5 Haga clic en **Si ya ha preparado la impresora, vaya a Conectar**.

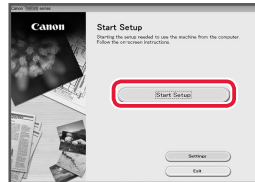
»»» Nota

Los siguientes pasos son para usuarios de Windows (excepto Windows 10 in S mode) y macOS. Para otros sistemas operativos, continúe con la configuración siguiendo las instrucciones en pantalla.

- 6 Haga clic en **Descargar**.

- 7 Ejecute el archivo descargado.

- 8 Haga clic en **Iniciar configuración (Start Setup)**.



- 9 Siga las instrucciones que aparezcan en pantalla.

- Estas operaciones pueden llevar algún tiempo.
- Para conectar con un teléfono inteligente también, consulte "6-b. Conexión con un teléfono inteligente" en la página 5.

Uso del CD-ROM de instalación para Windows

Haga doble clic en **EasySetup.exe** en el CD-ROM y, a continuación, continúe desde el paso 3. Si no tiene una conexión a Internet, abra la carpeta **win** en el CD-ROM y haga doble clic en **SETUP.exe**. Esto instalará el controlador de la impresora.

6-b

Conexión con un teléfono inteligente

Si utiliza varios teléfonos inteligentes, realice estos pasos en cada teléfono inteligente.



Prepare lo siguiente antes de empezar.

- 1 Active la configuración de Wi-Fi en su teléfono inteligente.
- 2 Conecte su teléfono inteligente al router inalámbrico (si tiene un router inalámbrico).

Consulte los manuales de su teléfono inteligente y del router inalámbrico para obtener más detalles.

1 Instale la aplicación "Canon PRINT Inkjet/SELPHY" en su teléfono inteligente.

- Escanee el código QR que se muestra a la derecha para acceder al sitio web de Canon y, a continuación, descargue la aplicación.



2 Abra la aplicación instalada.

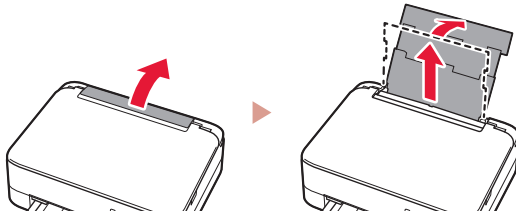
3 Siga las instrucciones en pantalla de la aplicación para agregar su impresora.

Cuando haya agregado la impresora, podrá imprimir desde su teléfono inteligente.
Para imprimir fotos, consulte "Carga de papel fotográfico" en la página 6.

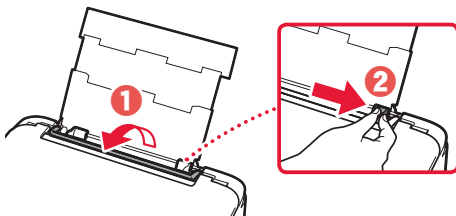
Carga de papel fotográfico

El papel fotográfico solo se puede cargar en la bandeja posterior.

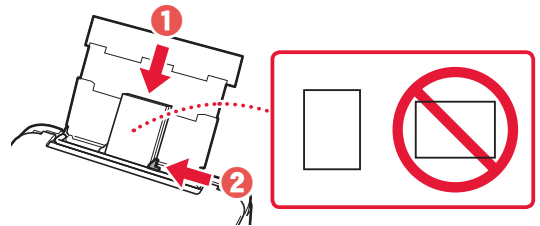
- 1 Abra la cubierta de la bandeja posterior y extienda el soporte del papel.



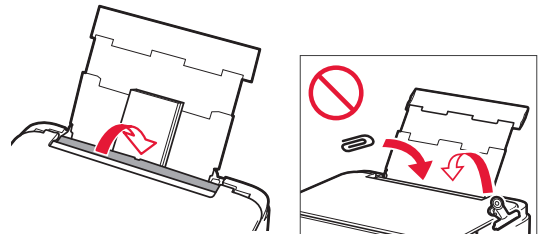
- 2 Abra la cubierta de la ranura de alimentación y deslice la guía del papel del lado derecho totalmente hacia la derecha.



- 3 Cargue varias hojas de papel fotográfico con la cara de impresión hacia arriba y deslice la guía del papel lateral contra el borde de las hojas de papel.

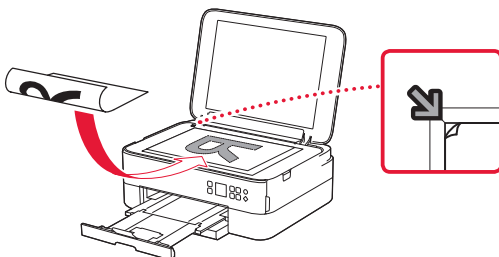


- 4 Cierre la cubierta de la ranura de alimentación.
 - Siga las instrucciones en pantalla para definir la información para el papel cargado.



Copia

- 1 Encienda la impresora.
- 2 Cargue papel Carta o papel normal de tamaño A4.
- 3 Abra la cubierta de documentos y coloque el documento cara abajo en la platina. Alinee el documento con la marca de alineación (↘).



- 4 Cierre la cubierta de documentos.
- 5 Pulse el botón **OK**.
- 6 Seleccione **Configuración de copias (Copy settings)** y, a continuación, pulse el botón **OK**.
- 7 Especifique la configuración de impresión utilizando los botones ▲, ▼ y **OK**.

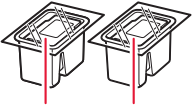


- 8 Pulse el botón **Iniciar (Start)**.

Ρύθμιση του εκτυπωτή

1. Περιεχόμενα συσκευασίας

● Φυσιίγια FINE



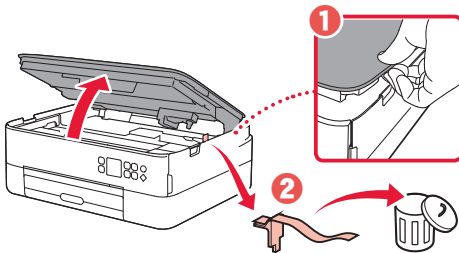
Εγχρωμο Μαύρο

- Καλώδιο τροφοδοσίας
- CD-ROM εγκατάστασης για Windows
- Πληροφορίες για την ασφάλεια και σημαντικές πληροφορίες
- Ξεκινώντας (αυτό το εγχειρίδιο)

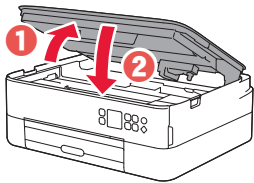
2. Αφαίρεση υλικών συσκευασίας



- 1 Αφαιρέστε και απορρίψτε τυχόν υλικά συσκευασίας και πορτοκαλί ταινία.
- 2 Ανοίξτε τη μονάδα σάρωσης / κάλυμμα, αφαιρέστε και απορρίψτε την πορτοκαλί ταινία και το προστατευτικό υλικό από το εσωτερικό.



- 3 Κλείστε τη μονάδα σάρωσης / κάλυμμα.
 - Ανοίξτε πλήρως τη μονάδα σάρωσης / κάλυμμα και, έπειτα, κλείστε τη.

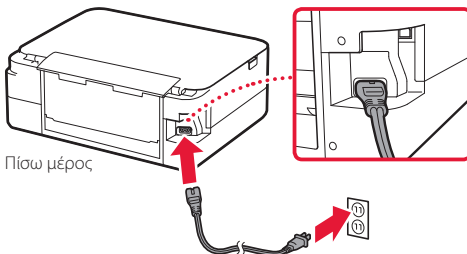


▲ Προσοχή
Προσέχετε τα δάχτυλά σας.

3. Ενεργοποίηση του εκτυπωτή

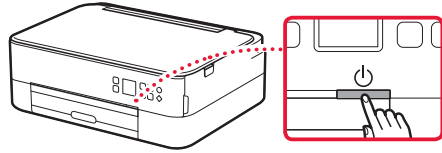


- 1 Συνδέστε το καλώδιο τροφοδοσίας.

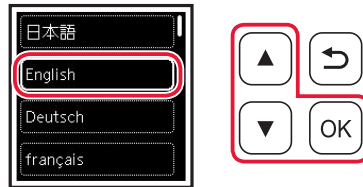


»»» Σημαντικό
Προς το παρόν, μη συνδέσετε άλλα καλώδια.

- 2 Πατήστε το κουμπί **ON**.



- 3 Χρησιμοποιήστε τα κουμπιά **▲**, **▼** και **OK** για να επιλέξετε μια γλώσσα.



- 4 Πατήστε το κουμπί **OK**.



»»» Σημαντικό

Σαρώστε τον κωδικό QR για να δείτε ένα βίντεο με οδηγίες σχετικά με τη διαδικασία ρύθμισης.

- 5 Χρησιμοποιήστε τα κουμπιά **▲** και **▼** για δείτε το περιεχόμενο που εμφανίζεται στην οθόνη και, στη συνέχεια, πατήστε το κουμπί **OK**.

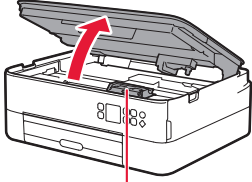


Ρύθμιση του εκτυπωτή

4. Τοποθέτηση των φυσιγγίων FINE



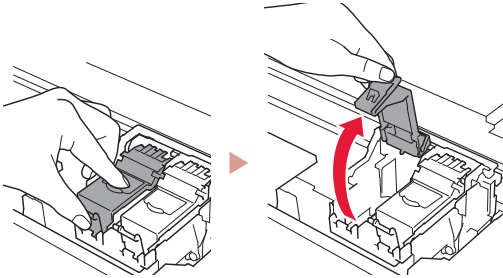
- 1 Ανοίξτε τη μονάδα σάρωσης / κάλυμμα.



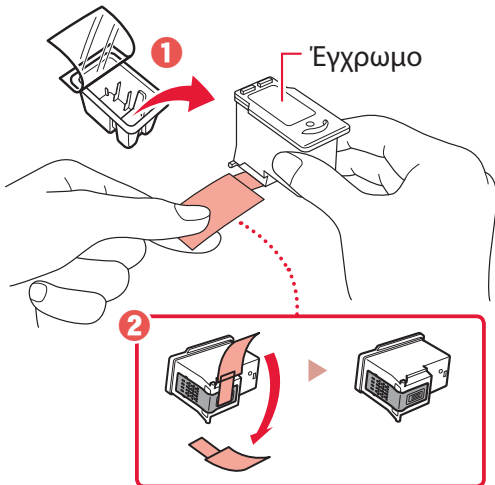
⚠ Προσοχή

Μην αγγίζετε τη θήκη φυσιγγίου FINE μέχρι να σταματήσει να κινείται.

- 2 Πιέστε και ανοίξτε το κάλυμμα ασφάλισης φυσιγγίου μελάνης στην αριστερή πλευρά.

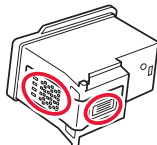


- 3 Αφαιρέστε το έγχρωμο φυσίγγιο FINE από τη συσκευασία και αφαιρέστε την προστατευτική ταινία.

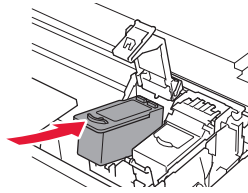


»»» Σημαντικό

- Μην αγγίζετε τη μελάνη που παραμένει στην προστατευτική ταινία. Μπορεί να λερώσετε τα χέρια σας ή τα γύρω αντικείμενα.
- Μην αγγίζετε τις περιοχές που υποδεικνύονται στην εικόνα. Διαφορετικά, ο εκτυπωτής ενδέχεται να μην εκτυπώνει σωστά.

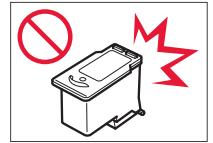


- 4 Τοποθετήστε το έγχρωμο φυσίγγιο FINE στη θήκη φυσιγγίου FINE.

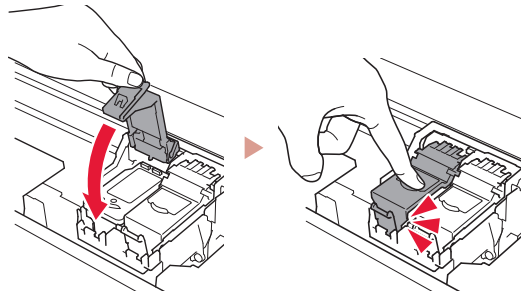


»»» Σημαντικό

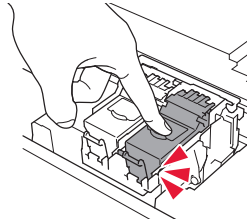
Μη χτυπάτε το φυσίγγιο FINE. Κάτι τέτοιο μπορεί να προκαλέσει δυσλειτουργία.



- 5 Πιέστε το κάλυμμα ασφάλισης φυσιγγίου μελάνης προς τα κάτω μέχρι να κουμπώσει στη θέση του.

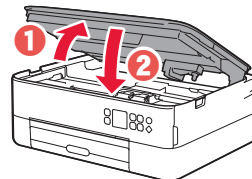


- 6 Επαναλάβετε τα βήματα 2 έως 5 και εγκαταστήστε και το μαύρο φυσίγγιο FINE στη δεξιά πλευρά.



- 7 Κλείστε τη μονάδα σάρωσης / κάλυμμα.

- Ο εκτυπωτής αρχίζει να προετοιμάζεται.



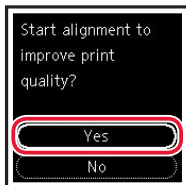
⚠ Προσοχή

Προσέχετε τα δάχτυλά σας.

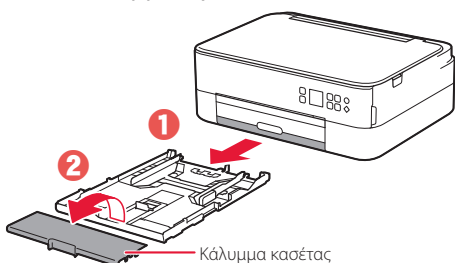
5. Τοποθέτηση χαρτιού



1 Πατήστε το κουμπί **OK**.

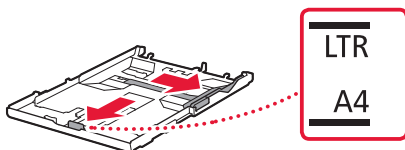


2 Αφαιρέστε την κασέτα από τον εκτυπωτή καθώς και το κάλυμμα της κασέτας.



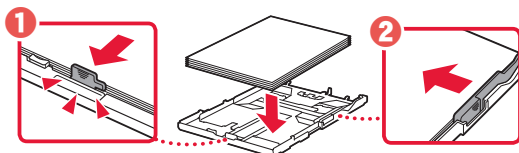
3 Σύρετε τους οδηγούς χαρτιού ώστε να τους διαχωρίσετε.

- Σύρετε το δεξιό οδηγό χαρτιού στο δεξιό άκρο. Ευθυγραμμίστε τον μπροστινό οδηγό χαρτιού με την ένδειξη Letter ή A4.

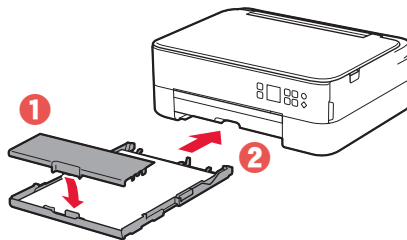


4 Τοποθετήστε χαρτί.

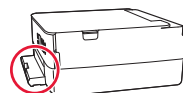
- Τοποθετήστε 2 ή περισσότερες σελίδες απλού χαρτιού μεγέθους Letter ή A4, με την πλευρά εκτύπωσης στραμμένη προς τα κάτω.
- Τοποθετήστε το χαρτί στον μπροστινό οδηγό χαρτιού και ευθυγραμμίστε τον δεξιό οδηγό χαρτιού με το πλάτος του χαρτιού.



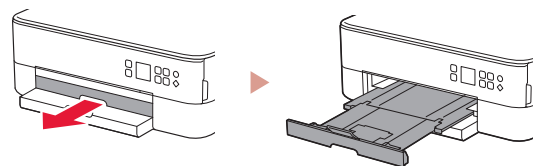
5 Τοποθετήστε ξανά το κάλυμμα της κασέτας καθώς και την κασέτα.



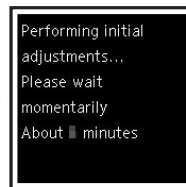
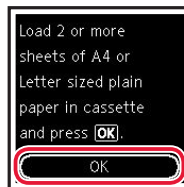
- Κοιτάξτε την από το πλάι για να επιβεβαιώσετε ότι είναι όπως στο διάγραμμα.



6 Τραβήξτε έξω τη θήκη εξόδου χαρτιού.



7 Πατήστε το κουμπί **OK**.



8 Πατήστε το κουμπί **OK**.



»»» Σημαντικό

Σαρώστε τον κωδικό QR για να δείτε ένα βίντεο με οδηγίες σχετικά με τη διαδικασία ρύθμισης.

9 Βεβαιωθείτε ότι εμφανίζεται η ακόλουθη οθόνη.



Αν πρόκειται να χρησιμοποιήσετε τον εκτυπωτή χωρίς να συνδέσετε άλλες συσκευές, τότε η ρύθμιση έχει ολοκληρωθεί.

Τι συσκευή σκοπεύετε να συνδέσετε;



Υπολογιστής



Υπολογιστής και
smartphone



Smartphone

6-a

Σύνδεση με υπολογιστή

Εάν χρησιμοποιείτε πολλούς υπολογιστές, εκτελέστε αυτά τα βήματα σε κάθε υπολογιστή.



- 1 Μεταβείτε στη διαδικτυακή τοποθεσία της Canon από έναν υπολογιστή.

<https://ij.start.canon>



- 2 Επιλέξτε  **Εγκατάσταση**.

- 3 Καταχωρίστε το όνομα μοντέλου του εκτυπωτή σας και κάντε κλικ στην επιλογή **Μετάβαση**.

- 4 Κάντε κλικ στο **Έναρξη**.

- 5 Κάντε κλικ στο **Αν έχετε ήδη προετοιμάσει τον εκτυπωτή σας, μεταβείτε στη Σύνδεση**.

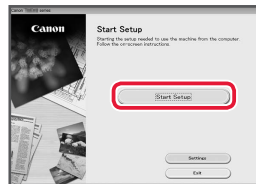
»»» Σημείωση

Τα παρακάτω βήματα αφορούν τους χρήστες Windows (εκτός από Windows 10 in S mode) και macOS. Στην περίπτωση άλλου λειτουργικού συστήματος, συνεχίστε τη ρύθμιση ακολουθώντας τις οδηγίες που εμφανίζονται στην οθόνη.

- 6 Κάντε κλικ στο **Λήψη**.

- 7 Εκτελέστε το ληφθέν αρχείο.

- 8 Κάντε κλικ στο **Εκκίνηση ρύθμισης (Start Setup)**.



- 9 Ακολουθήστε τις οδηγίες στην οθόνη.

- Αυτές οι λειτουργίες ενδέχεται να χρειαστούν κάποιο χρόνο.
- Για να συνδέσετε και σε smartphone, ανατρέξτε στην ενότητα «6-b. Σύνδεση με Smartphone» στη σελίδα 5.

Χρήση του CD-ROM εγκατάστασης για Windows

Κάντε διπλό κλικ στο αρχείο **EasySetup.exe** που υπάρχει στο CD-ROM και, έπειτα, συνεχίστε από το βήμα 3. Αν δεν έχετε σύνδεση internet, ανοίξτε το φάκελο **win** στο CD-ROM και κάντε διπλό κλικ στο αρχείο **SETUP.exe**. Αυτή η ενέργεια θα εγκαταστήσει το πρόγραμμα οδήγησης του εκτυπωτή.

6-b

Σύνδεση με Smartphone

Εάν χρησιμοποιείτε πολλά smartphone, εκτελέστε αυτά τα βήματα σε κάθε smartphone.

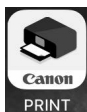


Προετοιμάστε τα εξής προτού ξεκινήσετε.

- 1 Ενεργοποιήστε τη ρύθμιση Wi-Fi στο smartphone σας.
 - 2 Συνδέστε το smartphone σας στον ασύρματο δρομολογητή (εάν έχετε ασύρματο δρομολογητή).
- Για περισσότερες λεπτομέρειες, ανατρέξτε στα εγχειρίδια του smartphone και του ασύρματου δρομολογητή.

1 Εγκαταστήστε την εφαρμογή «Canon PRINT Inkjet/SELPHY» στο smartphone σας.

- Για πρόσβαση στην τοποθεσία web της Canon, σαρώστε τον κωδικό QR που εμφανίζεται στα δεξιά και, έπειτα, πραγματοποιήστε λήψη της εφαρμογής.

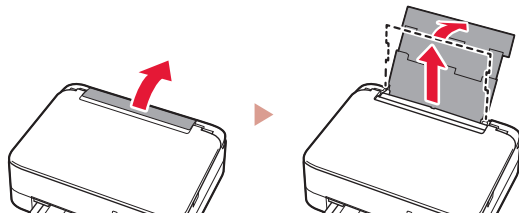
**2** Ανοίξτε την εγκατεστημένη εφαρμογή.**3** Ακολουθήστε τις οδηγίες που εμφανίζονται στην οθόνη της εφαρμογής για να προσθέσετε τον εκτυπωτή σας.

Αφού προσθέσετε τον εκτυπωτή σας, θα μπορείτε να εκτυπώνετε από το smartphone σας. Για να εκτυπώσετε φωτογραφίες, ανατρέξτε στην ενότητα «Τοποθέτηση φωτογραφικού χαρτιού» στη σελίδα 6.

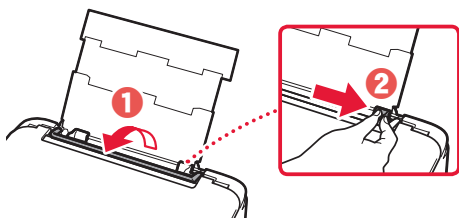
Τοποθέτηση φωτογραφικού χαρτιού

Το φωτογραφικό χαρτί μπορεί να τοποθετηθεί μόνο στην πίσω θήκη.

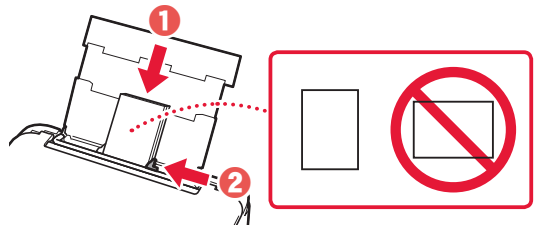
- 1 Ανοίξτε το κάλυμμα πίσω θήκης και εκτείnete την υποστήριξη χαρτιού.



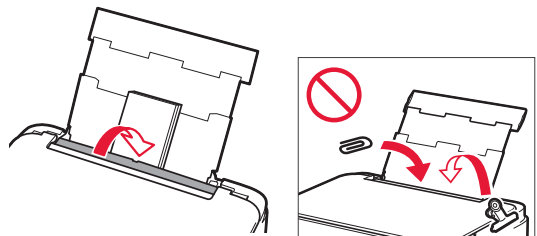
- 2 Ανοίξτε το κάλυμμα υποδοχής τροφοδοσίας και σύρετε το δεξιό οδηγό χαρτιού προς τα δεξιά έως το τέρμα.



- 3 Τοποθετήστε πολλά φύλλα φωτογραφικού χαρτιού με την πλευρά εκτύπωσης στραμμένη προς τα πάνω και σύρετε τον πλαϊνό οδηγό χαρτιού στην άκρη της στοίβας χαρτιών.

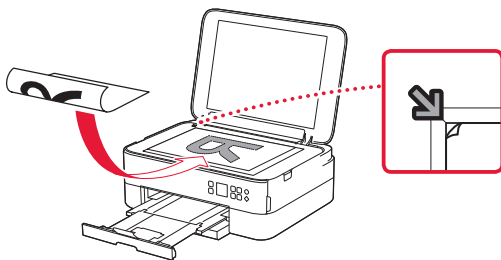


- 4 Κλείστε το κάλυμμα υποδοχής τροφοδοσίας.
 - Ακολουθήστε τις οδηγίες στην οθόνη για να ορίσετε πληροφορίες για το τοποθετημένο χαρτί.



Αντιγραφή

- 1 Ενεργοποιήστε τον εκτυπωτή.
- 2 Τοποθετήστε απλό χαρτί μεγέθους Letter ή A4.
- 3 Ανοίξτε το κάλυμμα εγγράφων και τοποθετήστε το έγγραφο με την τυπωμένη πλευρά στραμμένη προς τα κάτω πάνω στην επιφάνεια σάρωσης. Ευθυγραμμίστε το έγγραφο με το σημάδι ευθυγράμμισης (↙).



- 4 Κλείστε το κάλυμμα εγγράφων.
- 5 Πατήστε το κουμπί **OK**.
- 6 Επιλέξτε **Ρυθμίσεις αντιγραφής (Copy settings)** και, στη συνέχεια, πατήστε το κουμπί **OK**.
- 7 Ορίστε τις ρυθμίσεις εκτύπωσης, χρησιμοποιώντας τα κουμπιά ▲, ▼ και **OK**.

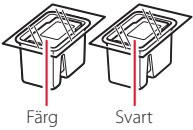


- 8 Πατήστε το κουμπί **Έναρξη (Start)**.

Ställa in skrivaren

1. Boxens innehåll

• FINE-kassetter

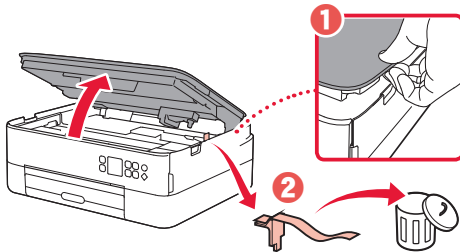


- Strömkabel
- Installations-CD för Windows
- Information om säkerhet och annan viktig information
- Uppstartsguide (denna handbok)

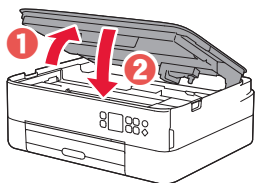
2. Ta bort förpackningsmaterial



- 1 Ta bort och kassera eventuellt förpackningsmaterial och orange tejp.
- 2 Öppna skannerenheten/luckan, ta bort och kassera den orange tejpens och det skyddsmaterialet inuti.



- 3 Stäng skannerenheten/luckan.
 - Öppna skannerenheten/luckan helt och stäng den sedan.

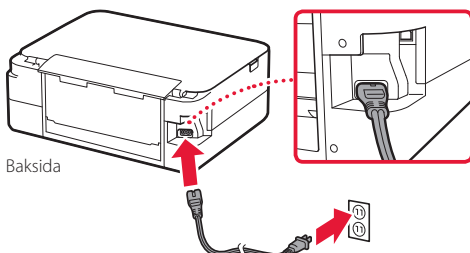


⚠ Försiktighet
Akta fingrarna.

3. Slå på skrivaren



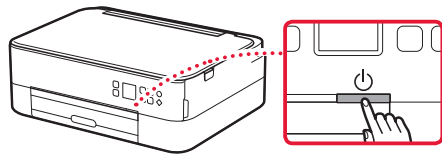
- 1 Anslut strömkabeln.



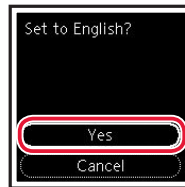
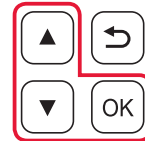
»»» Viktigt!

Anslut inga andra kablar än strömkabeln ännu.

- 2 Tryck på **PÅ (ON)**.



- 3 Använd knapparna **▲**, **▼** och **OK** för att välja ett språk.



- 4 Tryck på **OK**.



»»» Viktigt!

Skanna QR-koden för videoinstruktioner för installationsproceduren.

- 5 Använd knapparna **▲** och **▼** för att kontrollera skärminnehållet. Sedan trycker du på **OK**.

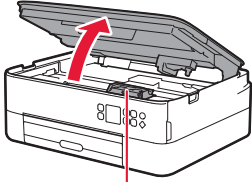


Ställa in skrivaren

4. Installera FINE-kassetterna



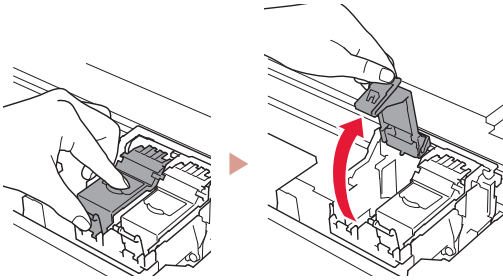
1 Öppna skannerenheten/luckan.



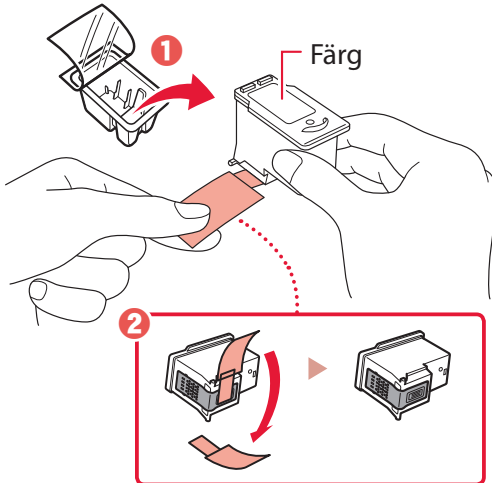
⚠️ Försiktighet

Rör inte hållaren för FINE-kassetten förrän den har stannat.

2 Nyp tag i och öppna låslucken på bläckkassetten på vänster sida.

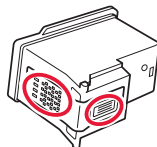


3 Ta bort färg-FINE-kassetten från behållaren och ta bort skyddstejpen.

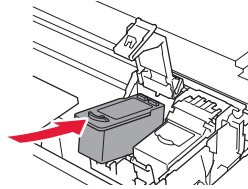


»»» Viktigt!

- Rör inte bläcket på skyddstejpen. Det kan ge fläckar på dina händer eller omgivande objekt.
- Rör inte områdena som visas på bilden. Annars kanske inte skrivaren fungerar korrekt.

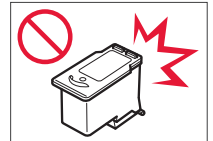


4 Sätt färg-FINE-kassetten i hållaren för FINE-kassetter.

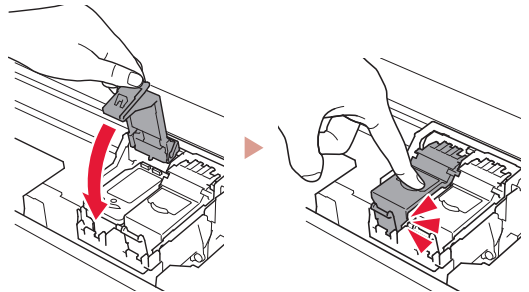


»»» Viktigt!

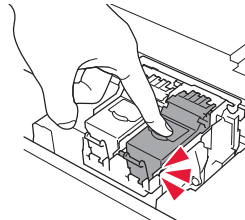
Låt inte FINE-kassetterna stöta i något. Det kan göra att den slutar fungera.



5 Tryck ned låslucken på bläckkassetten ordentligt tills den klickar på plats så att den stängs helt och hållet.

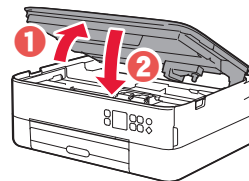


6 Upprepa steg 2 till 5 och installera den svarta FINE-kassetten också, på höger sida.



7 Stäng skannerenheten/luckan.

- Skrivaren börjar initialiseras.



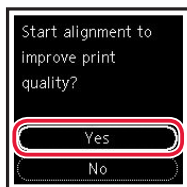
⚠️ Försiktighet

Akta fingrarna.

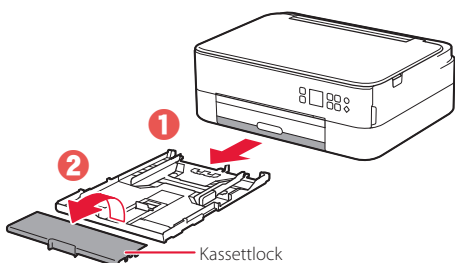
5. Fylla på papper



1 Tryck på OK.

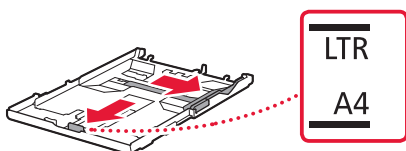


2 Dra ut kassetten ur skrivaren och ta bort kassetlocket.



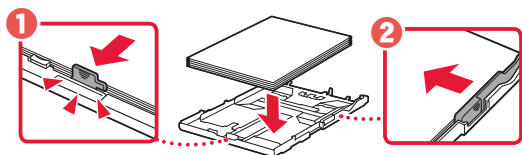
3 Skjut isär pappersledarna.

- Skjut den högra pappersledaren ut mot högerkanten. Justera den främre pappersledaren mot Letter- eller A4-märket.

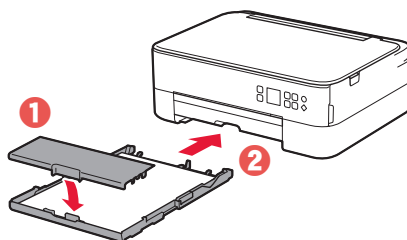


4 Fyll på papper.

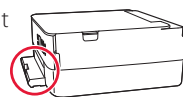
- Lägg i 2 eller fler blad med vanligt Letter- eller A4-papper med utskriftssidan vänd nedåt.
- Lägg papperet mot den främre pappersledaren och justera den högra pappersledaren efter papperets bredd.



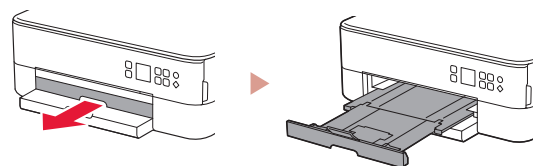
5 Sätt dit kassetlocket och sätt tillbaka kassetten.



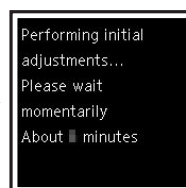
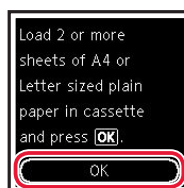
- Kontrollera från sidan att det ser ut som diagrammet.



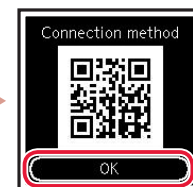
6 Dra ut utmatningsfacket.



7 Tryck på OK.



8 Tryck på OK.



»»» Viktigt!

Skanna QR-koden för videoinstruktioner för installationsproceduren.

9 Kontrollera att följande skärm visas.



Inställningen är nu klar om du ska använda skrivaren utan att ansluta några andra enheter.

Vilken enhet ansluter du?



Dator



Dator och
smarttelefon



Smarttelefon

6-a

Ansluta till dator

Om du använder flera datorer utför du dessa steg på varje dator.



- 1 Gå till Canons webbplats på en dator.

<https://ij.start.canon>



- 2 Välj  **Konfigurera**.

- 3 Mata in skrivarens modellnamn och klicka på **Kör**.

- 4 Klicka på **Starta**.

- 5 Klicka på **Om du redan har förberett skrivaren går du till Anslut**.

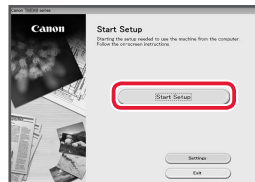
►►► Obs!

Följande steg gäller för användare med Windows (utom Windows 10 in S mode) eller macOS. För andra operativsystem fortsätter du följa anvisningarna på skärmen istället.

- 6 Klicka på **Hämta**.

- 7 Starta den hämtade filen.

- 8 Klicka på **Starta inställningar (Start Setup)**.



- 9 Följ instruktionerna på skärmen.

- Dessa åtgärder kan ta en stund.
- Om du också vill ansluta till en smarttelefon, läs "6-b. Ansluta till en smarttelefon" på sida 5.

Använda installations-CD:n för Windows

Dubbelklicka på **EasySetup.exe** på CD:n och fortsätt sedan från steg 3. Om du inte har en internetanslutning öppnar du mappen **win** på CD:n och dubbelklickar på **SETUP.exe**. Då installeras skrivardrivrutinen.

6-b

Ansluta till en smarttelefon

Om du använder flera smarttelefoner utför du dessa steg på varje smarttelefon.



Förbered följande innan du börjar.

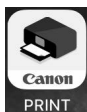
- 1 Aktivera inställningen Wi-Fi på smarttelefonen.
 - 2 Anslut smarttelefonen till den trådlösa routern (om du har en trådlös router).
- Läs smarttelefonens och den trådlösa routerns handböcker för mer detaljer.

1 Installera appen "Canon PRINT Inkjet/SELPHY" på smarttelefonen.

- Skanna QR-koden till höger för att komma till Canons webbplats och hämta sedan appen.



2 Öppna den installerade appen.



3 Följ instruktionerna på skärmen i appen för att lägga till skrivaren.

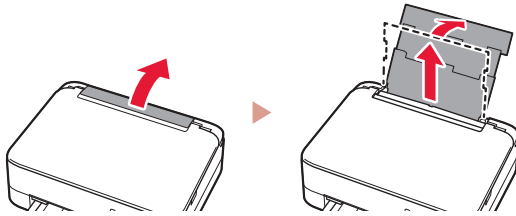
När du har lagt till skrivaren kan du skriva ut från din smarttelefon.

Om du vill skriva ut foton, läs "Fylla på fotopapper" på sida 6.

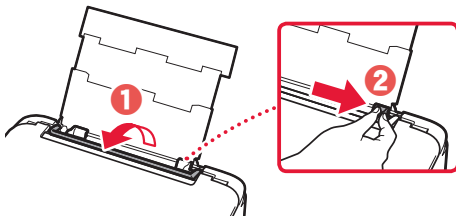
Fylla på fotopapper

Fotopapper kan endast fyllas på i det bakre facket.

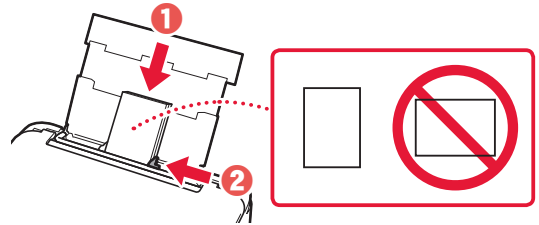
- 1 Öppna det bakre fackets lock och dra ut pappersstödet.



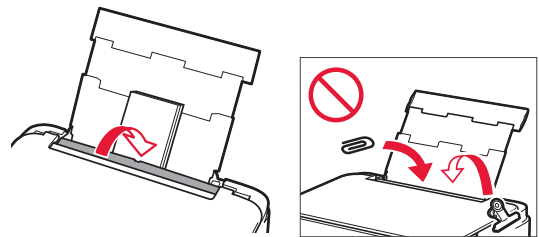
- 2 Öppna luckan för matningsfacket och skjut höger pappersledare längst ut till höger.



- 3 Lägg i flera ark fotopapper med utskriftssidan vänd uppåt och skjut pappersledaren på sidan mot kanten av pappersbunten.

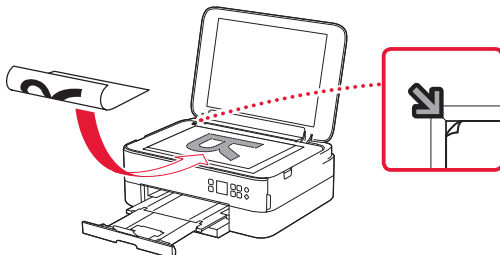


- 4 Stäng luckan för matningsfacket.
 - Följ instruktionerna på skärmen för att ange information om det påfyllda papperet.



Kopiera

- 1 Slå på skrivaren.
- 2 Lägg i vanligt Letter- eller A4-papper.
- 3 Öppna dokumentluckan och placera dokumentet med framsidan nedåt på glaset. Passa in dokumentet efter justeringsmärket (▼).



- 4 Stäng dokumentluckan.
- 5 Tryck på **OK**.
- 6 Välj **Kopieringsinställningar (Copy settings)** och tryck sedan på **OK**.
- 7 Ange utskriftsinställningar med knapparna ▲, ▼ och **OK**.

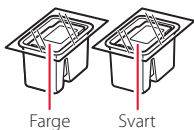


- 8 Tryck på knappen **Start**.

Konfigurere skriveren

1. Innhold i esken

- FINE-kassetter

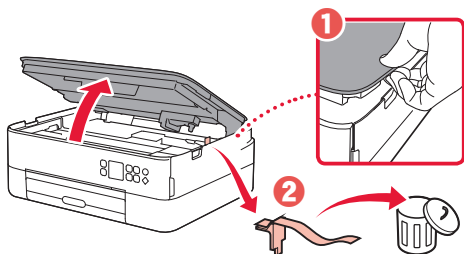


- Strømledning
- Installerings-CD-ROM for Windows
- Sikkerhetsinformasjon og viktig informasjon
- Komme i gang (denne manualen)

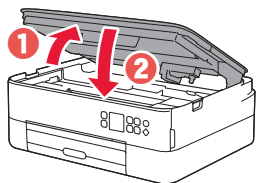
2. Fjerne beskyttelsesmateriale



- 1 Fjern og kast eventuelt beskyttelsesmateriale og oransje tape.
- 2 Åpne skanneenheten/dekselet, fjern og kast den oransje tapen og beskyttelsesmaterialet inni.



- 3 Lukk skanneenheten/dekselet.
 - Åpne skanneenheten/dekselet helt, og lukk den/det igjen.

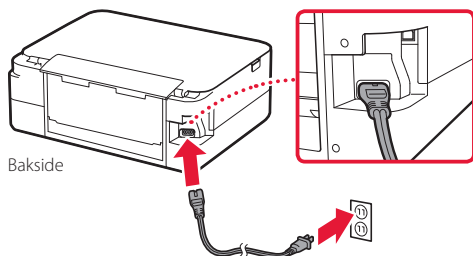


⚠ Forsiktig!
Pass på fingrene.

3. Slå på skriveren



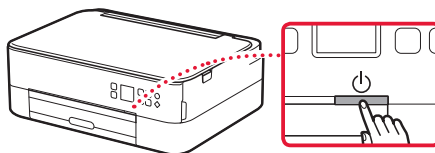
- 1 Koble til strømledningen.



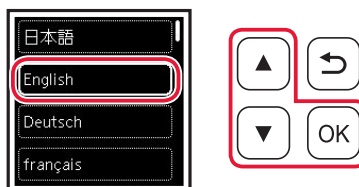
▶▶▶ **Viktig!**

Ikke koble til andre kabler på dette tidspunktet.

- 2 Trykk på **PÅ (ON)**-knappen.



- 3 Bruk knappene ▲, ▼ og **OK** for å velge et språk.



- 4 Trykk på **OK**-knappen.



▶▶▶ **Viktig!**

Skann QR-koden for en videoveiledning om oppsettsprosedyren.

- 5 Bruk knappene ▲ og ▼ til å kontrollere innholdet på skjermen, og trykk deretter på **OK**-knappen.

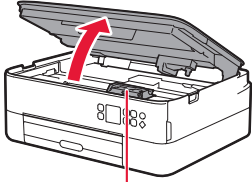


Konfigurere skriveren

4. Installere FINE-kassetten



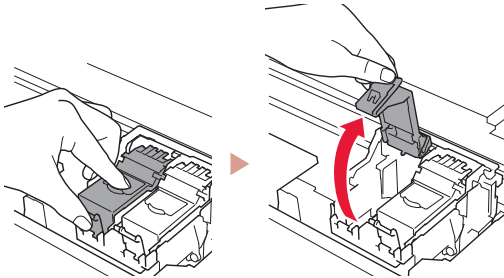
1 Åpne skanneenheten/dekselet.



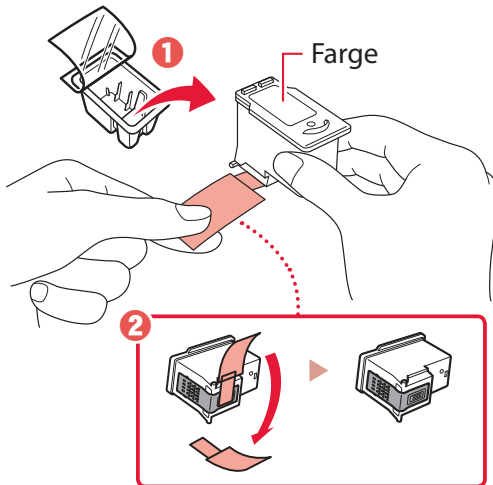
⚠ Forsiktig!

Ikke berør FINE-kassettholderen før den slutter å bevege seg.

2 Ta tak i og åpne låsedekselet for blekkassetter på venstre side.

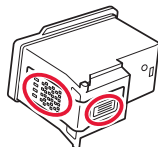


3 Ta FINE-kassetten for farge ut av beholderen og fjern beskyttelsestapen.

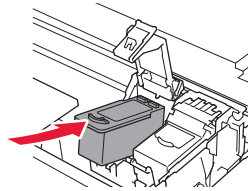


»»» Viktig!

- Ikke berør blekket på tapen. Det kan sette flekker på hendene dine eller andre gjenstander.
- Ikke berør områdene som er vist på figuren. Skriveren vil ellers ikke kunne skrive ut riktig.

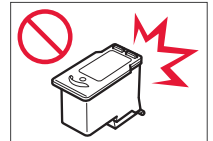


4 Sett FINE-kassetten med farger i FINE-kassettholderen.

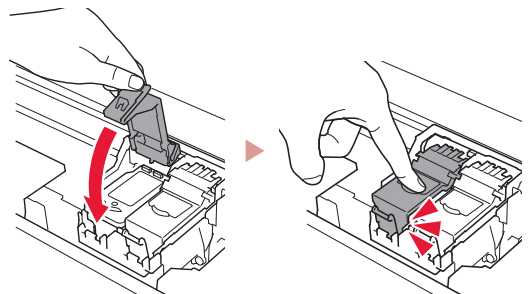


»»» Viktig!

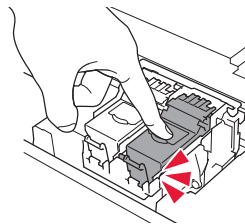
Ikke dunk FINE-kassetten. Dette kan gjøre at det oppstår feil.



5 Skyv godt ned låsedekselet for blekkassetter til det klikker på plass for å lukke det helt.

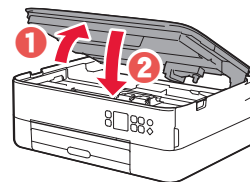


6 Gjenta trinn 2 til 5 og installer den svarte FINE-kassetten også, på høyre side.



7 Lukk skanneenheten/dekselet.

- Skriveren starter initialisering.



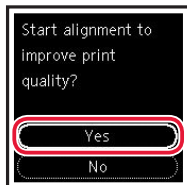
⚠ Forsiktig!

Pass på fingrene.

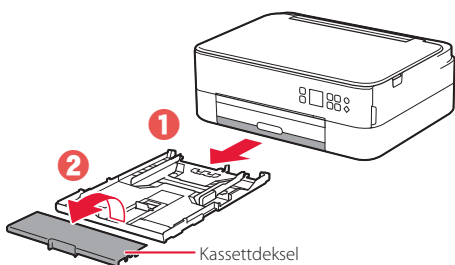
5. Legge i papir



1 Trykk på **OK**-knappen.

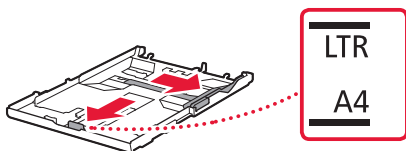


2 Fjern kassetten fra skriveren og fjern kassettdেকেselet.



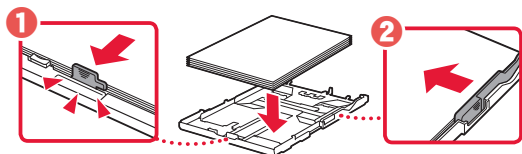
3 Dra fra hverandre papirfórerne.

- Skyv høye papirfórer mot høye kant. Juster fremre papirfórer med Letter- eller A4-merket.

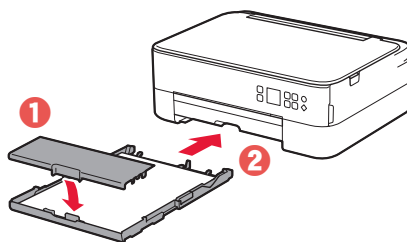


4 Legg i papir.

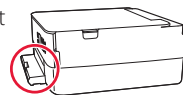
- Legg inn 2 ett eller flere ark vanlig papir i Letter- eller A4-format med utskriftssiden ned.
- Plasser papiret mot fremre papirfórer, og juster høye papirfórer ut fra bredden på papiret.



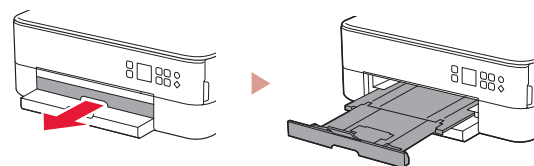
5 Fest kassettdেকেselet og skift ut kassetten.



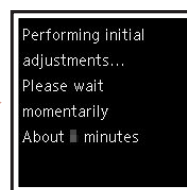
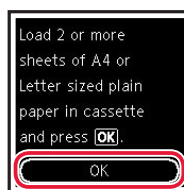
- Sjekk at alt ser ut som på skjemaet sett fra siden.



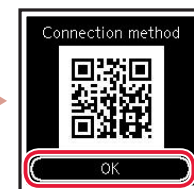
6 Trekk ut papirutmatingsbrettet.



7 Trykk på **OK**-knappen.



8 Trykk på **OK**-knappen.



»»» **Viktig!**

Skann QR-koden for en videoveiledning om oppsettsprosedyren.

9 Sjekk at følgende skjerm-bilde vises.



Oppsett er nå fullført hvis du ønsker å bruke skriveren uten tilkobling til andre enheter.

Hvilken enhet kobler du til?



Datamaskin



Datamaskin og smarttelefon



Smarttelefon

6-a

Koble til en datamaskin

Hvis du bruker flere datamaskiner, utfører du disse trinnene på hver datamaskin.



- 1 Åpne Canon-nettstedet fra en datamaskin.

<https://ij.start.canon>



- 2 Velg  **Oppsett**.

- 3 Angi skriverens modellnavn og klikk på **Gå**.

- 4 Klikk på **Start**.

- 5 Klikk på **Hvis du allerede har gjort klar skriveren, gå du til Koble til**.

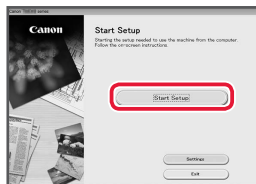
»»» Merk

Følgende trinn gjelder Windows- (bortsett fra Windows 10 in S mode) og macOS-brukere. Ved bruk av et annet operativsystem fortsetter du oppsettet ved i stedet å følge instruksjonene på skjermen.

- 6 Klikk på **Last ned**.

- 7 Kjør den nedlastede filen.

- 8 Klikk på **Start oppsett (Start Setup)**.



- 9 Følg instruksjonene på skjermen.

- Disse operasjonene kan ta litt tid.
- Se "6-b. Koble til en smarttelefon" på side 5 hvis du i tillegg vil koble til en smarttelefon.

Bruke installerings-CD-ROM for Windows

Dobbeltklikk på **EasySetup.exe** på CD-en, og fortsett deretter fra trinn 3. Hvis du ikke har internettforbindelse, kan du åpne **win**-mappen på CD-en og dobbeltklikk på **SETUP.exe**. Dette installerer skriverdriveren.

6-b

Koble til en smarttelefon

Hvis du bruker flere smarttelefoner, utfører du disse trinnene på hver smarttelefon.



Klargjør følgende før du starter.

- 1 Aktiver Wi-Fi-innstillingen på smarttelefonen.
- 2 Koble smarttelefonen til den trådløse ruter (hvis du har en trådløs ruter).
Se manualene for smarttelefonen og den trådløse ruter for å få flere detaljer.

- 1 Installer "Canon PRINT Inkjet/SELPHY"-appen på smarttelefonen.
 - Skann QR-koden til høyre for å få tilgang til Canon-nettstedet, og last deretter ned appen.



- 2 Åpne den installerte appen.



- 3 Følg instruksjonene på skjermen i appen for å legge til skriveren.

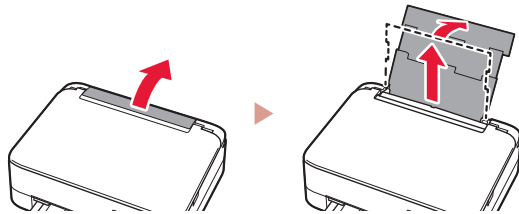
Når du har lagt til skriveren din, kan du skrive ut fra smarttelefon.

Se "Legge i fotopapir" på side 6 for mer informasjon om hvordan du skriver ut bilder.

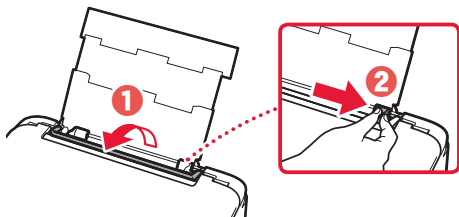
Legge i fotopapir

Fotopapir kan kun legges i bakskuffen.

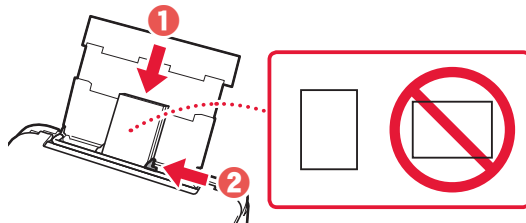
- 1 Åpne bakskuffdekelet, og forleng papirstøtten.



- 2 Åpne spordekelet for mating og skyv høyre papirfører helt mot høyre.

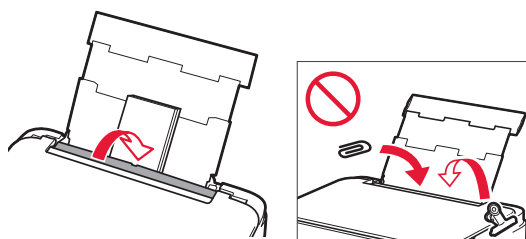


- 3 Legg inn flere ark med fotopapir med utskriftssiden opp, og skyv papirføreren fra siden mot kanten på papirstabelen.



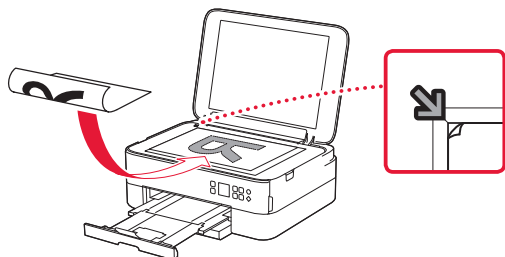
- 4 Lukk spordekelet for mating.

- Følg instruksjonene på skjermen for å angi informasjon for papiret som er lagt inn.

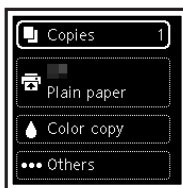


Kopiere

- 1 Slå på skriveren.
- 2 Legg inn vanlig papir i Letter- eller A4-størrelse.
- 3 Åpne dokumentdekelet og plasser dokumentet med utskriftssiden ned på platen. Juster dokumentet etter justeringsmerket (↙).



- 4 Lukk dokumentdekelet.
- 5 Trykk på **OK**-knappen.
- 6 Velg **Kopiinnstillinger (Copy settings)**, og trykk deretter på **OK**-knappen.
- 7 Angi utskriftsinnstillinger med knappene ▲, ▼ og **OK**.

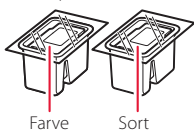


- 8 Trykk på **Start**-knappen.

Konfigurere printeren

1. Æskens indhold

- FINE-patroner

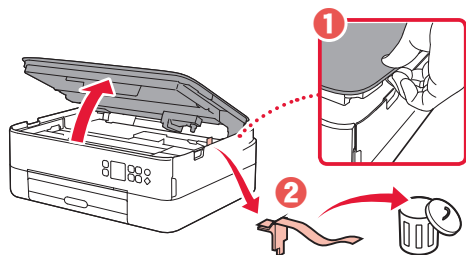


- Netledning
- Installations-cd-rom til Windows
- Sikkerhedsoplysninger og vigtige oplysninger
- Før du begynder (denne vejledning)

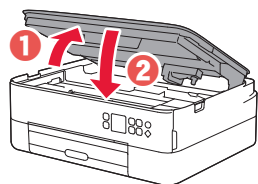
2. Fjern emballage



- 1 Fjern og bortskaf al emballage og orange tape.
- 2 Åbn scanningsenheden/dækslet, fjern den orange tape og det beskyttende materiale inde i printeren, og smid det væk.



- 3 Luk scanningsenheden/dækslet.
 - Åbn scanningsenheden/dækslet helt, og luk det derefter.

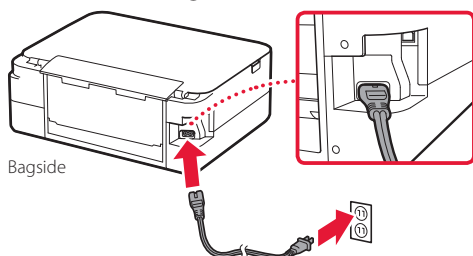


⚠ Forsigtig
Pas på dine fingre.

3. Tænd printeren



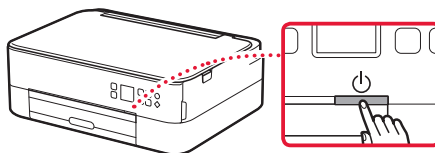
- 1 Tilslut netledningen.



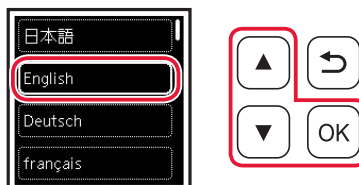
»»» **Vigtigt**

På dette tidspunkt må du ikke tilslutte nogen andre kabler.

- 2 Tryk på knappen **TIL (ON)**.



- 3 Brug knapperne ▲, ▼ og **OK** til at vælge et sprog.



- 4 Tryk på knappen **OK**.



»»» **Vigtigt**

Scan QR-koden for at se en videovejledning til opsætningen.

- 5 Brug knapperne ▲ og ▼ til at tjekke indholdet på skærmen, og tryk derefter på knappen **OK**.

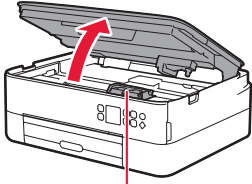


Konfigurere printeren

4. Installation af FINE-patroner



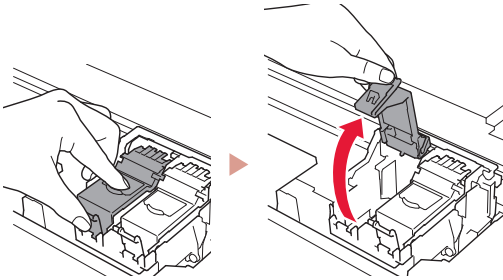
1 Åbn scanningsenheden/dækslet.



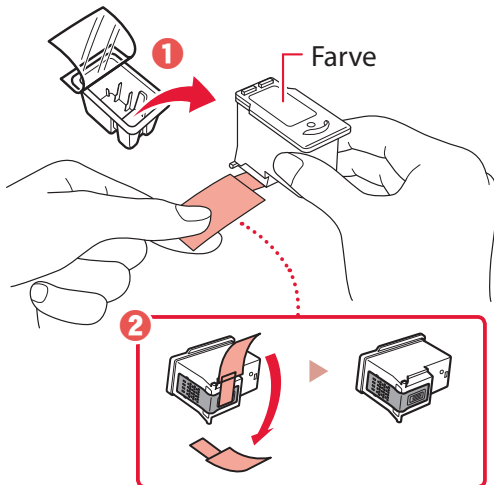
⚠ Forsigtig

Undgå at røre ved FINE-patronholderen, før den stopper.

2 Knib sammen, og åbn låsedækslet til blækpatronen på venstre side.

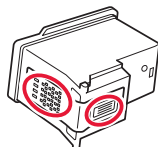


3 Tag farve-FINE-patronen ud af holderen, og fjern beskyttelsestapen.

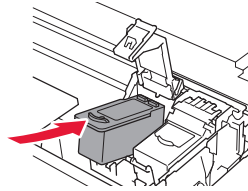


»»» Vigtigt

- Rør ikke ved blækket på den beskyttende tape. Det kan give pletter på dine hænder og genstande i nærheden.
- Rør ikke de områder, der vises på figuren. Hvis du gør det, kan printeren muligvis ikke udskrive korrekt.

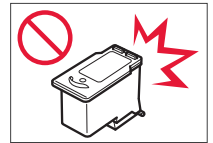


4 Sæt farve-FINE-patronen i FINE-patronholderen.

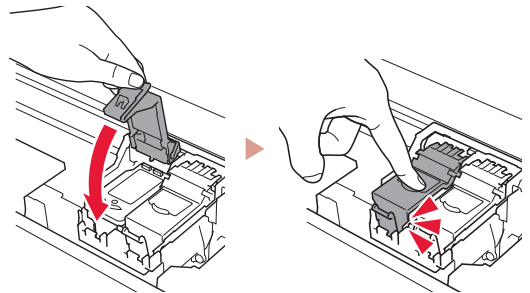


»»» Vigtigt

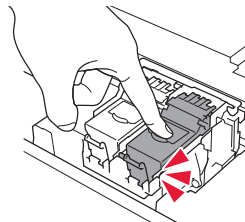
Pas på, at du ikke kommer til at støde FINE-patroner mod noget. Det kan medføre funktionsfejl.



5 Skub låsedækslet til blækpatronen ned, indtil det klikker på plads og låses fast.

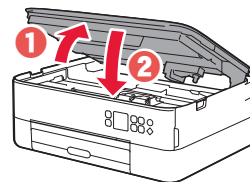


6 Gentag trin 2 til 5, og indsæt den sorte FINE-patron til højre.



7 Luk scanningsenheden/dækslet.

- Printeren initialiseres.



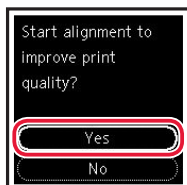
⚠ Forsigtig

Pas på dine fingre.

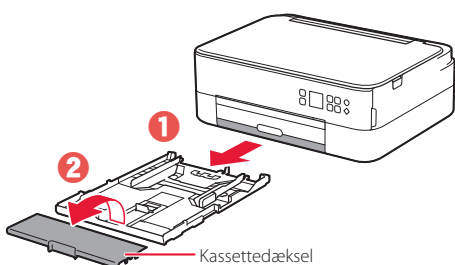
5. Ilægning af papir



1 Tryk på knappen **OK**.

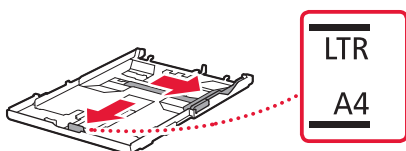


2 Fjern kassetten fra printeren, og fjern kassettedækslet.



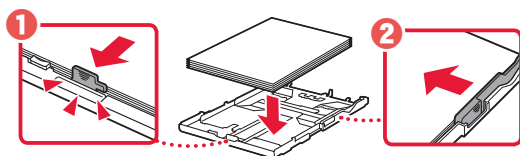
3 Skub papirstyrene fra hinanden.

- Skub højre papirstyr til den højre kant. Juster det forreste papirstyr med Letter- eller A4-mærket.

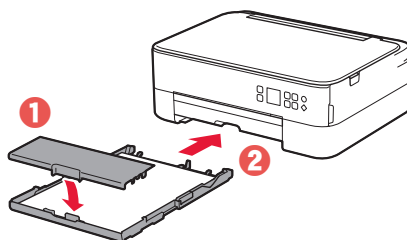


4 Ilæg papir.

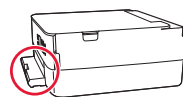
- Ilæg 2 eller flere ark almindeligt Letter- eller A4-papir med udskriftssiden nedad.
- Placer papiret mod det forreste papirstyr, og juster derefter det højre papirstyr med bredden af papiret.



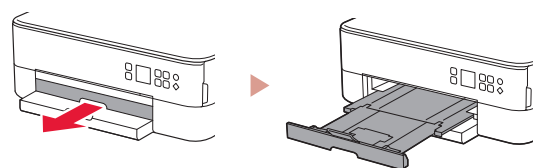
5 Sæt kassettedækslet på, og udskift kassetten.



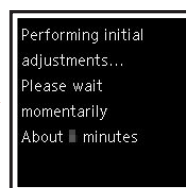
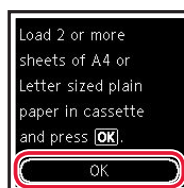
- Kig på printeren fra siden, og bekræft, at det ser ud som på tegningen.



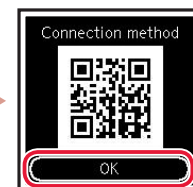
6 Træk udbakken til papir ud.



7 Tryk på knappen **OK**.



8 Tryk på knappen **OK**.



»»» **Vigtigt**

Scan QR-koden for at se en videovejledning til opsætningen.

9 Tjek, at følgende skærbillede vises.



Hvis du vil bruge printeren uden at tilslutte andre enheder, er opsætningen færdig nu.

Hvilken enhed tilslutter du?



Computer



Computer og
smartphone



Smartphone

6-a

Tilslutning til en computer


Hvis du bruger flere computere, skal du udføre disse trin på hver computer.



- 1 Gå til Canon-webstedet fra en computer.

<https://ij.start.canon>

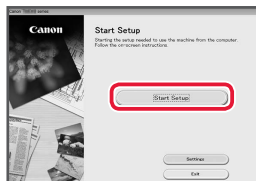


- 2 Vælg  **Konfiguration**.
- 3 Skriv printerens modelnavn, og klik på **Ok**.
- 4 Klik på **Start**.
- 5 Klik på **Hvis du allerede har forberedt din, skal du gå til Tilslut**.

»»» Bemærk

Følgende trin gælder for Windows- (bortset fra Windows 10 in S mode) og macOS-brugere. Hvis du bruger andre operativsystemer, skal du fortsætte konfigurationen ved at følge instruktionerne på skærmen i stedet.

- 6 Klik på **Hent**.
- 7 Kør den downloadede fil.
- 8 Klik på **Start opsætning (Start Setup)**.



- 9 Følg instruktionerne på skærmen.
 - Disse handlinger kan tage lidt tid.
 - Hvis du også vil tilslutte en smartphone, skal du se "6-b. Tilslutning til en smartphone" på side 5.

Brug installations-cd-rom'en til Windows

Dobbeltklik på **EasySetup.exe** på cd-rom'en, og fortsæt derefter fra trin 3. Hvis du ikke har internetforbindelse, skal du åbne mappen **win** på cd-rom'en og dobbeltklikke på **SETUP.exe**. Herefter installeres printerdriveren.

6-b Tilslutning til en smartphone

Hvis du bruger flere smartphones, skal du udføre disse trin på hver smartphone.



Forbered følgende inden start.

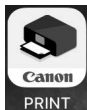
- 1 Aktivér indstillingen Wi-Fi på din smartphone.
- 2 Slut din smartphone til den trådløse router (hvis du har en trådløs router).
Se brugervejledningerne til din smartphone og trådløse router for at få flere oplysninger.

1 Installer appen "Canon PRINT Inkjet/SELPHY" på din smartphone.

- Scan den QR-kode, der vises til højre, for at få adgang til webstedet Canon, og download derefter appen.



2 Åbn den installerede app.



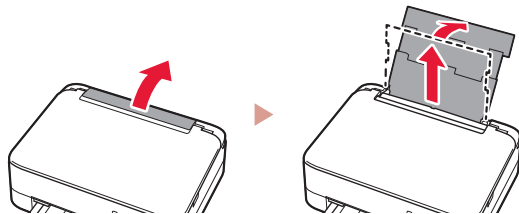
3 Følg instruktionerne på skærmen i appen for at tilføje din printer.

Når du har tilføjet din printer, kan du udskrive fra din smartphone.
Hvis du vil udskrive fotos, skal du se "Ilægning af fotopapir" på side 6.

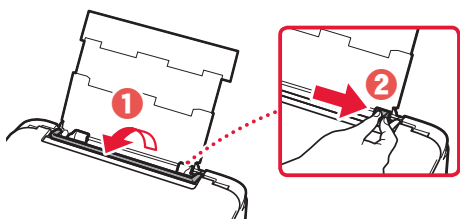
Ilægning af fotopapir

Der kan kun lægges fotopapir i den bagerste bakke.

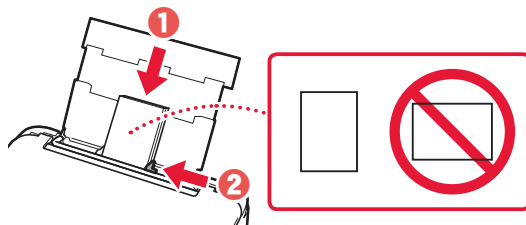
- 1 Åbn dækslet til bagerste bakke, og træk papirstøtten ud.



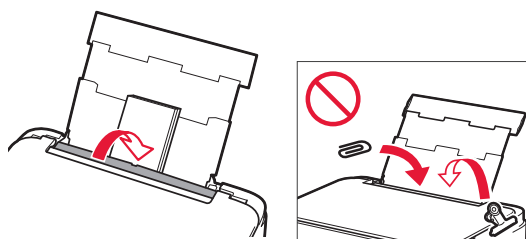
- 2 Åbn arkføderdækslet, og skub det højre papirstyr helt ud til højre.



- 3 Ilæg flere ark fotopapir med udskriftssiden opad, og skub papirstyret på siden mod kanten af papirstakken.

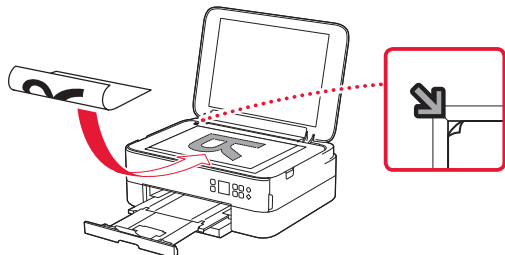


- 4 Luk arkføderdækslet.
 - Følg instruktionerne på skærmen for at angive oplysninger for det ilagte papir.



Kopiering

- 1 Tænd printeren.
- 2 Ilæg almindeligt papir i Letter- eller A4-størrelse.
- 3 Åbn dokumentdækslet, og placer dokumentet med forsiden nedad på pladen. Juster dokumentet med justeringsmærket (↙).



- 4 Luk dokumentdækslet.
- 5 Tryk på knappen **OK**.
- 6 Vælg **Kopieringsindstillinger (Copy settings)**, og tryk derefter på knappen **OK**.
- 7 Angiv udskriftsindstillinger ved hjælp af knapperne ▲, ▼ og **OK**.

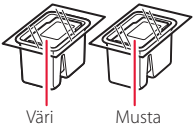


- 8 Tryk på knappen **Start**.

Tulostimen asennus

1. Paketin sisälllys

● FINE-kasetit

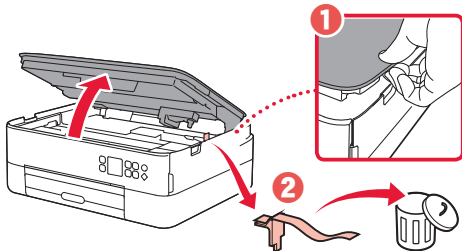


- Virtajohto
- Asennus-CD Windows-tietokoneelle
- Turvallisuus ja tärkeitä tietoja
- Aloitusopas (tämä käyttöopas)

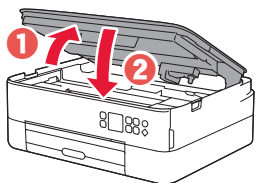
2. Pakkausmateriaalien poistaminen



- 1 Poista kaikki pakkausmateriaalit ja oranssi teippi.
- 2 Avaa skannausyksikkö/kansi, poista oranssi teippi ja suojamateriaali sisäpuolelta.



- 3 Sulje skannausyksikkö/kansi.
 - Avaa skannausyksikkö/kansi täysin ja sitten sulje se.

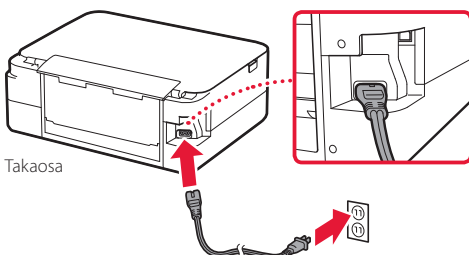


⚠ **Huomio**
Varo sormiasi.

3. Virran kytkeminen tulostimeen



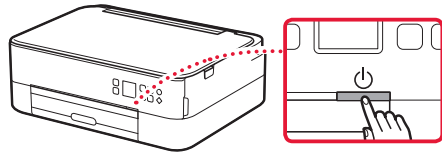
- 1 Kytke virtajohto.



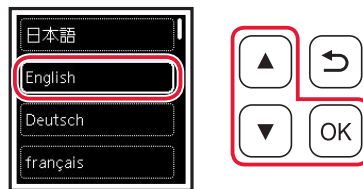
»»» **Tärkeää**

Älä tässä vaiheessa kytke mitään muuta johtoa.

- 2 Paina **KÄYTTÖSSÄ (ON)** -painiketta.



- 3 Valitse kieli ▲-, ▼- ja OK-painikkeilla.



- 4 Paina **OK**-painiketta.



»»» **Tärkeää**

Skannaa QR-koodi, jos haluat katsoa asetuksen video-ohjeet.

- 5 Tarkasta näytön sisältö ▲- ja ▼-painikkeilla, ja paina sitten **OK**-painiketta.

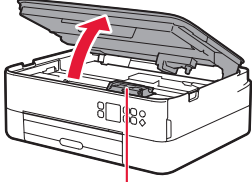


Tulostimen asennus

4. FINE-kasettien asentaminen



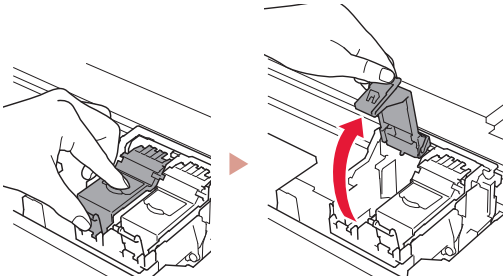
1 Avaa skannausyksikkö/kansi.



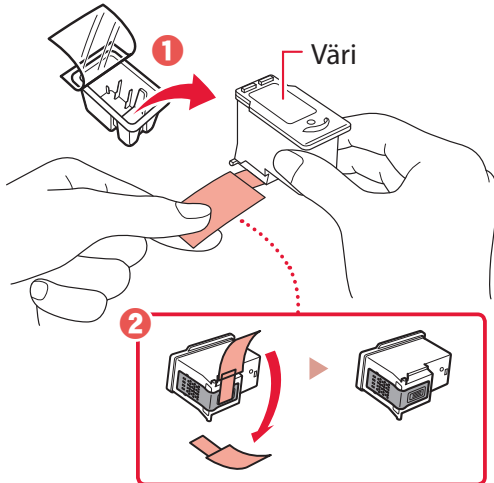
⚠ Huomio

Älä koske FINE-kasetin pidikkeeseen, ennen kuin se pysähtyy.

2 Avaa mustekasetin lukituskansi vasemmalla puolella.

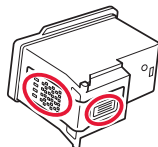


3 Poista värillinen FINE-kasetti pakkauksesta ja irrota suojateippi.

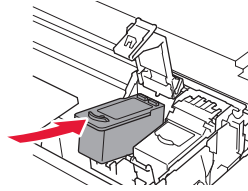


»»» Tärkeää

- Älä koske suojateipissä olevaan musteeseen. Se saattaa liata kätesi tai ympärillä olevia esineitä.
- Älä koske kuvassa merkittyihin alueisiin. Tulostin välttämättä tulosta muussa tapauksessa oikein.

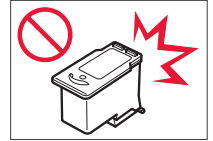


4 Aseta värillinen FINE-kasetti FINE-kasetin pidikkeeseen.

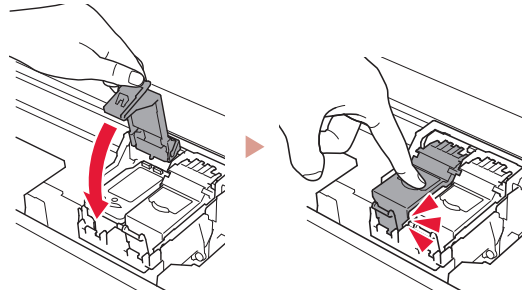


»»» Tärkeää

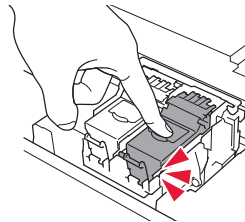
Älä pumpkaa FINE-kasettia. Se voi aiheuttaa toimintahäiriön.



5 Sulje mustekasetin lukituskansi painamalla sitä kevyesti, kunnes se napsahtaa paikalleen.

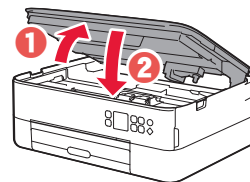


6 Toista vaiheet 2–5 ja asenna myös musta FINE-kasetti oikealle.



7 Sulje skannausyksikkö/kansi.

- Tulostin aloittaa alustamisen.



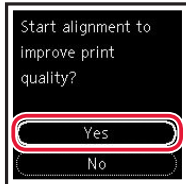
⚠ Huomio

Varo sormiasi.

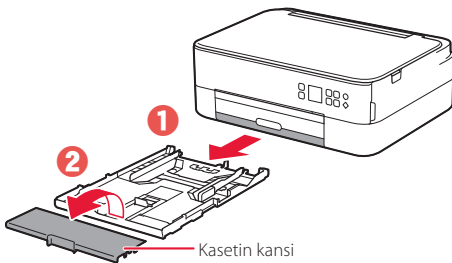
5. Paperin asettaminen



1 Paina OK-painiketta.

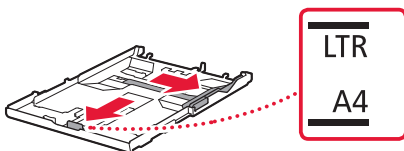


2 Poista kasetti tulostimesta ja poista kasetin kansi.



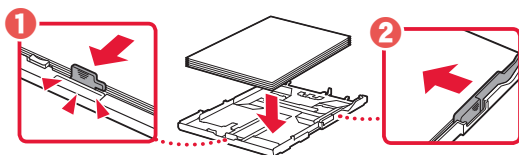
3 Liu'uta paperiohjaimet erilleen.

- Liu'uta oikeanpuoleinen paperiohjain oikeaan reunaan. Kohdistu etummainen paperiohjain Letter- tai A4-merkin kanssa.

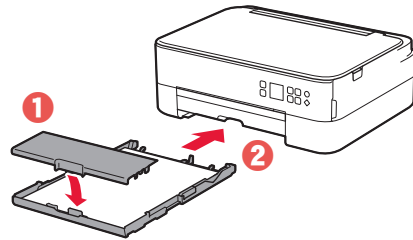


4 Lisää paperia.

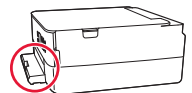
- Aseta vähintään 2 Letter- tai A4-kokoista arkki tavallista paperia tulostuspuoli alaspäin.
- Aseta paperi edessä olevaa paperiohjainta vasten ja kohdistu oikeanpuoleinen paperiohjain paperin leveyteen.



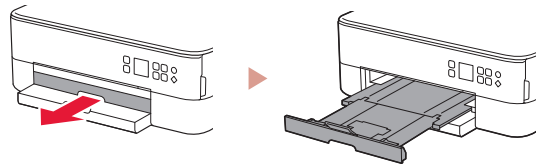
5 Aseta kasetin kansi ja aseta kasetti takaisin paikoilleen.



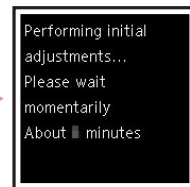
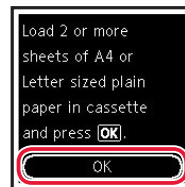
- Katso sitä sivulta ja varmista, että se on kaavion kaltainen.



6 Vedä paperin luovutustaso esiin.



7 Paina OK-painiketta.



8 Paina OK-painiketta.



»»» Tärkeää

Skannaa QR-koodi, jos haluat katsoa asetuksen video-ohjeet.

9 Tarkista, että seuraava näyttö tulee näkyviin.



Jos käytät tulostinta ilman yhteyttä muihin laitteisiin, asetus on valmis.

Mitä laitetta olet yhdistämässä?



Tietokone



Tietokone ja
älypuhelin



Älypuhelin



6-a

Yhdistäminen tietokoneeseen

Jos käytät useita tietokoneita, suorita nämä vaiheet jokaiselle tietokoneelle.



- 1 Avaa tietokoneesta Canon-verkkosivusto.

<https://ij.start.canon>



- 2 Valitse  **Määrittäminen**.

- 3 Anna tulostinmallin nimi ja valitse **Siirry**.

- 4 Valitse **Aloita**.

- 5 Valitse **Jos olet jo valmistellut tulostimen, siirry kohtaan Yhdistä**.

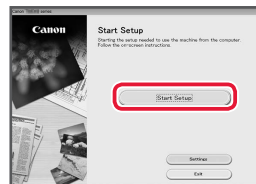
»»» Huomautus

Seuraavat vaiheet ovat Windows- (paitsi Windows 10 in S mode) ja macOS-käyttäjille. Jos käytät muuta käyttöjärjestelmää, jatka asennusta näytön ohjeiden mukaan.

- 6 Valitse **Lataa**.

- 7 Suorita ladattu tiedosto.

- 8 Valitse **Aloita asetukset (Start Setup)**.



- 9 Noudata näytön ohjeita.

- Näissä toiminnoissa voi kestää hetken.
- Jos haluat liittää myös älypuhelimien, katso kohtaa "6-b. Yhdistäminen älypuhelimeen" sivulla 5.

Asennus-CD-levyn käyttö Windows-järjestelmässä

Kaksoinapsauta CD-levyn **EasySetup.exe**-tiedostoa, ja jatka sitten vaiheesta 3. Jos sinulla ei ole internet-yhteyttä, avaa CD-levyn **win**-kansio ja kaksoinapsauta **SETUP.exe**. Tämä asentaa tulostinajurin.

6-b

Yhdistäminen älypuhelimien

Jos käytät useita älypuhelimia, suorita nämä vaiheet jokaiselle älypuhelimelle.



Valmistelee seuraavat, ennen kuin aloitat.

- 1 Ota Wi-Fi-asetus käyttöön älypuhelimessa.
 - 2 Yhdistä älypuhelin langattomaan reitittimeen (jos käytössäsi on langaton reititin).
- Katso lisätietoja älypuhelimien ja langattoman reitittimen käyttöoppaista.

1 Asenna "Canon PRINT Inkjet/SELPHY" -sovellus älypuhelimien.

- Skannaa QR-koodi, joka näkyy oikealla, niin pääset Canon-sivustoon, ja lataa sitten sovellus.



2 Avaa asennettu sovellus.



3 Noudata tulostimen lisäämisessä sovelluksen näytön ohjeita.

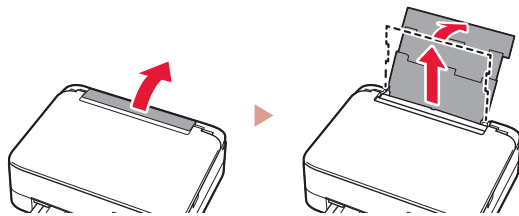
Kun olet lisännyt tulostimen, voit tulostaa älypuhelimesta.

Jos tulostat valokuvia, katso kohtaa "Valokuvapaperin asettaminen" sivulla 6.

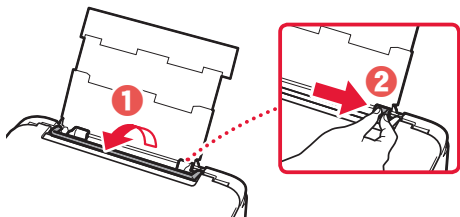
Valokuvapaperin asettaminen

Valokuvapaperia voi lisätä ainoastaan takalokeroon.

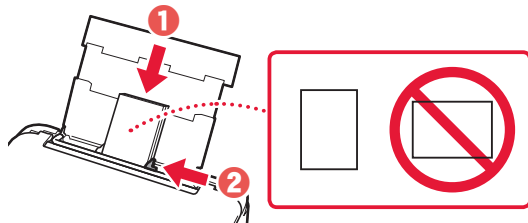
- 1 Avaa takalokeron kansi ja avaa sitten paperituki.



- 2 Avaa syöttöaukon kansi ja liu'uta oikeanpuoleinen paperiohjain oikeaan reunaan.

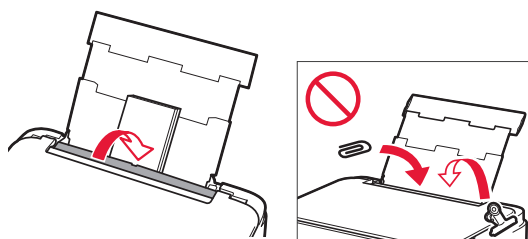


- 3 Aseta useita arkkeja valokuvapaperia tulostuspuoli ylöspäin, ja liu'uta sitten sivun paperiohjain paperipinon reunaan vasten.



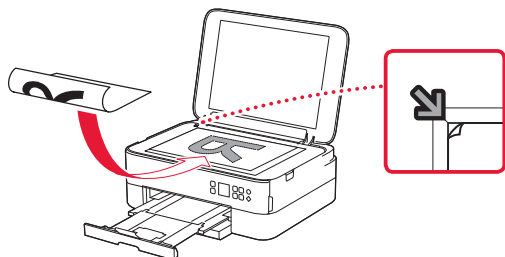
- 4 Sulje syöttöaukon kansi.

- Jatka asetetun paperin tietojen asettamista noudattamalla näytössä näkyviä ohjeita.

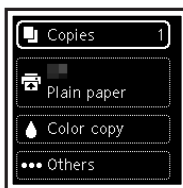


Kopiointi

- 1 Kytke tulostimen virta.
- 2 Aseta tavallista Letter- tai A4-kokoista paperia.
- 3 Avaa asiakirjakkansi ja aseta asiakirja tasolle kopioitava puoli alaspäin. Kohdista asiakirja kohdistusmerkkiin (↘).



- 4 Sulje asiakirjakkansi.
- 5 Paina **OK**-painiketta.
- 6 Valitse **Kopiointiasetukset (Copy settings)**, ja paina sitten **OK**-painiketta.
- 7 Määritä tulostusasetukset ▲-, ▼- ja **OK**-painikkeilla.



- 8 Paina **Aloita (Start)** -painiketta.



Access Online Manual
Zugriff auf das Online-Handbuch
Accedere al Manuale online
Acceso al Manual en línea
Läs Onlinehandbok
Åbn Online vejledning

Accès au Manuel en ligne
Online handleiding openen
Acesse o Manual On-line
Αποκτήστε πρόσβαση στο Εγχειρίδιο Online
Gå til Nettbasert manual
Online-käyttöopas-oppaan käyttö

From your browser

À partir de votre navigateur

Über Ihren Browser

Via de browser

Dal browser

Do seu navegador

Desde su navegador

Από το πρόγραμμα περιήγησής σας

Från webbläsaren

Fra nettleseren din

Fra din browser

Selaimesta

