



Philips Evnia Gaming  
Monitor  
4K UHD gaming monitor

### Evnia 6000

32 (31.5"/80 cm diag.)  
3840 x 2160 (4K UHD)



32M2N6800M

## Your gaming experience to the utmost

This monitor transforms your gaming experience with showstopping visuals. With its DisplayHDR 1000 certification and 144 Hz refresh rate, imagery is crisp and vibrant and is designed for any type of gameplay.

#### Features designed for gamers' needs

- Ambiglow intensifies entertainment with a halo of light
- Stark ShadowBoost: for enhancing visibility in dark scenes
- SmartImage game mode optimised for gamers
- SmartErgoBase enables user-friendly ergonomic adjustments
- LowBlue mode and Flicker-free easy-on-the eyes viewing
- Smart Crosshair: for better aim and more fun

#### Built for fast action

- 144 Hz refresh rates for ultra-smooth, brilliant images
- Low input lag reduces time delay between devices to monitor

#### Immersive visuals

- DisplayHDR 1000 for truly vivid details and realism
- Mini LED with local dimming 1152 zones
- IPS LED wide view technology for image and colour accuracy
- UltraClear 4K UHD (3840 x 2160) resolution for precision

EVNIA

PHILIPS

4K UHD gaming monitor  
Evnia 6000 32 (31.5"/80 cm diag.), 3840 x 2160 (4K UHD)

32M2N6800M/00

# Highlights

## IPS technology



IPS displays use an advanced technology that gives you extra-wide viewing angles of 178/178 degrees, making it possible to view the display from almost any angle. Unlike standard TN panels, IPS displays give you remarkably crisp images with vivid colours, making them ideal not only for Photos, movies and web browsing, but also for professional applications that demand colour accuracy and consistent brightness at all times.

## VESA DisplayHDR 1000



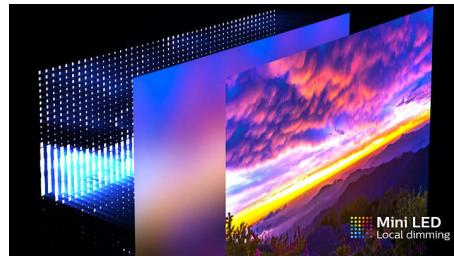
VESA-certified DisplayHDR 1000 delivers a dramatically different visual experience vs. other 'HDR compatible' screens. Extreme deep blacks and bright whites contrast with brilliant colours to bring out details that you've never experienced before. Gamers can spot enemies hiding in the dark corners and shadows easily and movie viewers can enjoy a more compelling and lifelike show. This Philips Momentum comes with several HDR modes, each optimised for your usage scenarios: HDR Game, HDR Movie and HDR Photo.

## UltraClear 4K UHD resolution



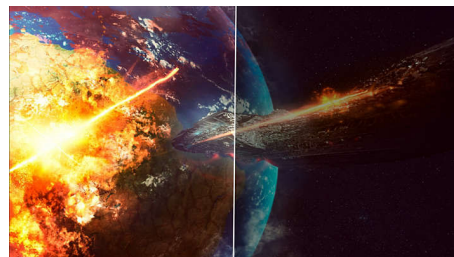
These Philips displays utilise high-performance panels to deliver UltraClear, 4K UHD (3840 x 2160) resolution images. Whether you are a demanding professional requiring extremely detailed images for CAD solutions, a user of 3D graphics applications or a financial wizard working on huge spreadsheets, Philips displays will make your images and graphics come alive.

## Mini LED backlight



Mini LED backlighting improves control of lighting and contrast ratio. The small size of the mini LEDs forming the backlight allows for the creation of 1152 individually controlled zones delivering deeper blacks and brighter whites. Rich HDR content can now be viewed as it was intended with unmatched contrast and precise reproduction.

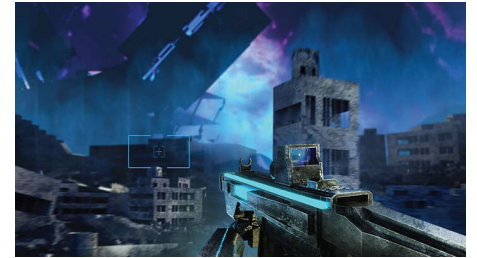
## Stark ShadowBoost



This feature enhances dark scenes without overexposing lightened areas. The Stark

ShadowBoost feature has three selectable levels that offer texturised images with better colour saturation and higher contrast, so you can see better in both light and dark environments. In addition, this feature helps you fine-tune your sight so that enemies get exposed more quickly when gaming.

## Smart Crosshair



Colour of Crosshair is set by default. When Smart Crosshair is on, the colour will change as a complementary colour to the background colour. Smart Crosshair enhances the aiming accuracy so you can spot the enemies more easily.

## LowBlue mode and Flicker-free



Our LowBlue Mode and Flicker-free technology have been developed to reduce eye strain and fatigue often caused by long hours in front of a monitor.



# Specifications

## Connectivity

- Signal Input: HDMI 2.1 x 2, DisplayPort 1.4 x 1
- Sync Input: Separate Sync
- Audio (In/Out): Audio out
- HDCP: HDCP 1.4 (HDMI/DisplayPort), HDCP 2.2 (HDMI/DisplayPort)
- USB Hub: USB-B upstream x 1, USB-A downstream x 3 (1 for fast charge)

## Picture/Display

- Panel Size: 31.5 inch/80 cm
- Aspect ratio: 16:9
- LCD panel type: IPS technology
- Backlight type: Mini LED with local dimming 1152 zones
- Pixel pitch: 0.1818 x 0.1818 mm
- Brightness uniformity: Peak: 1250 nits (HDR on), Normal: 700 nits
- Display colours: 1.07 Billion (8 bits + FRC)
- Colour gamut (typical): DCI-P 3:99.5%, NTSC 129%\*, sRGB 166%\*
- Contrast ratio (typical): 1000:1
- SmartContrast: Mega Infinity DCR
- Response time (typical): 1 ms (Grey to Grey)\*
- Viewing angle: 178° (H)/178° (V), @ C/R > 10
- Picture enhancement: SmartImage game
- Maximum resolution: HDMI: 3840 x 2160 @ 144 Hz; DP: 3840 x 2160 @ 144 Hz
- Effective viewing area: 698.112 (H) x 392.688 (V)
- Scanning Frequency: 30 kHz–255 kHz (H)/48–144 Hz (V)
- sRGB
- Delta E: < 2 (sRGB)
- Flicker-free
- Pixel Density: 140 PPI
- LowBlue Mode
- Display Screen Coating: Anti-Glare, 3H, Haze 25%
- SmartUniformity: 93 ~ 105%
- Low Input Lag
- EasyRead
- Adaptive sync
- HDR: HDR 1000
- Smart Crosshair
- Stark ShadowBoost

## Convenience

- Plug and Play Compatibility: DDC/CI, Mac OS X, sRGB, Windows 11/10
- User convenience: Power On/Off, Menu/OK, Input/Up, Game Settings/Down, SmartImage game/Back
- OSD Languages: Brazil Portuguese, Czech, Dutch, English, Finnish, French, German, Greek, Hungarian, Italian, Japanese, Korean, Polish, Portuguese, Russian, Spanish, Simplified Chinese,

- Swedish, Turkish, Traditional Chinese, Ukrainian
- Other convenience: Kensington lock, VESA mount (100 x 100 mm)

## Stand

- Height adjustment: 130 mm
- Swivel: -/+ 30 degree
- Tilt: -5/20 degree

## Power

- Power supply: Internal, 100–240 VAC, 50–60 Hz
- Off mode: 0.3 W (typ.)
- On mode: 50.86 W (typ.)
- Standby mode: 0.5 W (typ.)
- Power LED indicator: Operation - White, Standby mode - White (flashing)
- Energy Label Class: G

## Dimensions

- Packaging in mm (W x H x D): 930 x 526 x 226 mm
- Product without stand (mm): 715 x 426 x 72 mm
- Product with stand (max height): 715 x 612 x 311 mm

## Weight

- Product with packaging (kg): 12.17 kg
- Product with stand (kg): 9.3 kg
- Product without stand (kg): 7.4 kg

## Operating conditions

- Altitude: Operation: +12,000 ft (3658 m), Non-operation: +40,000 ft (12,192 m)
- Temperature range (operation): 0°C to 40 °C
- MTBF: 50 000 (Excluded backlight) hour(s)
- Relative humidity: 20%-80 %
- Temperature range (storage): -20°C to 60 °C

## Sustainability

- Environmental and energy: RoHS
- Recyclable packaging material: 100 %
- Post-consumer recycled plastics: 85%\*

## Compliance and standards

- Regulatory Approvals: CB, CE Mark, FCC Class B, ICES-003, TUV/ISO9241-307, TUV-BAUART, CCC, CECP, CEL

## Cabinet

- Colour: Dark Slate
- Finish: Textured

## What's in the box?

- Cables: HDMI cable, DisplayPort cable, USB-C to USB-C cable, Power cable\*
- Monitor with stand

Issue date 2024-06-30

© 2024 Koninklijke Philips N.V.  
All Rights reserved.

Version: 13.11.1

Specifications are subject to change without notice.  
Trademarks are the property of Koninklijke Philips N.V.  
or their respective owners.

EAN: 87 12581 80595 1

[www.philips.com](http://www.philips.com)

\* "IPS" word mark / trademark and related patents on technologies belong to their respective owners.  
\* The maximum resolution works for DP input only.  
\* For best output performance, please always ensure that your graphic card is capable of achieving the maximum resolution and refresh rate of this Philips display.  
\* Response time value equal to SmartResponse  
\* NTSC Area based on CIE 1976  
\* sRGB Area based on CIE1931  
\* The monitor may look different from feature images.  
\* The products and accessories listed on this leaflet may differ by country and region.  
\* This monitor strives for sustainability: the stand's feet are made with 35% recycled plastic and the monitor's chassis is made up of 85% post-consumer recycled plastic.