



Philips Curved Fast VA
Gaming monitor
Quad HD gaming monitor

Evnia 3000

31.5" (80cm)
2560 x 1440 (Quad HD)

32M2C3500L

Broaden your gaming horizon

This Fast VA monitor allows you to game with ultimate precision and speed at 180Hz. With sharp HDR quality imagery, curved frame, and Quad HD resolution guaranteed, this monitor produces an excellent all-around gaming experience.

Features designed for gamers needs

- SmartImage game mode optimized for gamers
- LowBlue mode and Flicker-free easy-on-the eyes viewing
- EasySelect menu toggle key for quick on-screen menu access
- Smart Crosshair: for better aim and more fun

Built for fast action

- 180Hz refresh rates for ultra-smooth, brilliant images
- AMD FreeSync™ Premium; tear free, stutter free, fluid gaming
- 0.5 ms ultra-fast speed for crisp image and smooth gameplay
- Low input lag reduces time delay between devices to monitor

Immersive visuals

- High Dynamic Range (HDR) for more lifelike colorful visuals
- SmartContrast for rich black details
- Curved display design for more immersive experience

PHILIPS

Quad HD gaming monitor
Evnia 3000 31.5" (80cm), 2560 x 1440 (Quad HD)

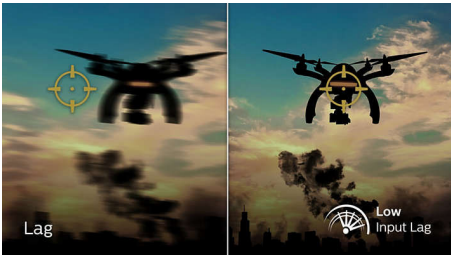
Highlights

180Hz Gaming



You play intense, competitive gaming. You demand display with lag free, ultra-smooth images. This display redraws the screen image up-to 180 times per second, effectively faster than a standard display. A lower frame rate can make enemies appear to jump from spot to spot on the screen, making them difficult targets to hit. With 180Hz frame rate, you get those critical missing images on the screen which shows enemy movement in ultra-smooth motion so you can easily target them. With ultra-low input lag and no screen tearing, this Philips display is your perfect gaming partner.

Low input lag



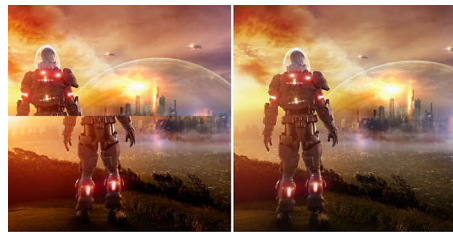
Input lag is the amount of time that elapses between performing an action with connected devices and seeing the result on screen. Low input lag reduces the time delay between entering a command from your devices to monitor, greatly improve on playing twitch-sensitive video games, particularly important to whom plays fast-paced, competitive games.

0.5 ms Smart MBR fast response



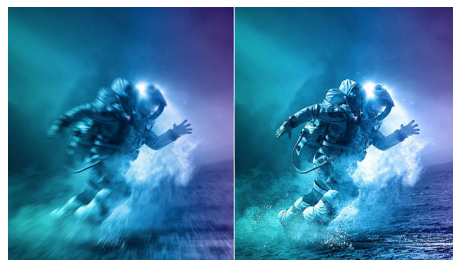
Philips display with 0.5 ms Smart MBR effectively eliminates smearing and motion blur, delivers sharper and precise visuals to enhance gaming experience. Fast-moving action and dramatic transitions will be rendered smoothly. Best choice for playing thrilling and twitch-sensitive games.

AMD FreeSync™ Premium



Gaming shouldn't be a choice between choppy gameplay or broken frames. AMD FreeSync™ Premium equips serious gamers with a fluid, tear-free gameplay experience at peak performance. There are no compromises, game confidently with a high refresh rate, low framerate compensation, and low latency.

Fast VA



This feature is made for action-packed gameplay. Not only does it work four times

32M2C3500L/00

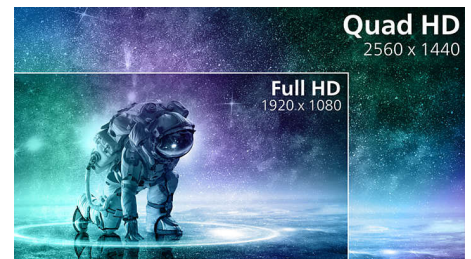
faster than a conventional VA panel, but it also pairs well with high frame rates for the utmost gaming quality at rapid speeds with sharp imagery guaranteed.

Curved display design



Desktop monitors offer a personal user experience, which suits a curve design very well. The curved screen provides a pleasant yet subtle immersion effect, which focuses on you at the center of your desk.

Crystalclear images



These Philips screens deliver Crystalclear, Quad HD 2560x1440 or 2560x1080 pixel images. Utilizing high performance panels with high density pixel count, enabled by high bandwidth sources like USB-C, Displayport, HDMI, these new displays will make your images and graphics come alive. Whether you are demanding professional requiring extremely detailed information for CAD-CAM solutions, using 3D graphic applications or a financial wizard working on huge spreadsheets, Philips displays will give you Crystalclear images.



Specifications

Connectivity

- Signal Input: HDMI 2.0 x 2, DisplayPort 1.4 x 2
- Sync Input: Separate Sync
- Audio (In/Out): Audio out
- HDCP: HDCP 1.4 (HDMI / DisplayPort), HDCP 2.2 (HDMI / DisplayPort)

Picture/Display

- Panel Size: 31.5 inch / 80 cm
- Aspect ratio: 16:9
- LCD panel type: VA LCD
- Backlight type: W-LED system
- Pixel pitch: 0.2724 x 0.2724 mm
- Brightness: 300 cd/m²
- Display colors: 16.7 M
- Color gamut (typical): NTSC 106%*, sRGB 120%*
- Contrast ratio (typical): 3500:1
- SmartContrast: Mega Infinity DCR
- Response time (typical): 1 ms (Gray to Gray)*
- Viewing angle: 178° (H) / 178° (V), @ C/R > 10
- Picture enhancement: SmartImage game
- Maximum resolution: HDMI: 2560 x 1440 @ 144 Hz, DP: 2540 x 1440 @ 180 Hz*
- Effective viewing area: 697.344 (H) x 392.256 (V) - at a 1500R curvature*
- Scanning Frequency: HDMI: 30 - 230 kHz (H) / 48 - 144 Hz (V), DP: 30 - 270 kHz (H) / 48 - 180 Hz (V)
- sRGB
- Delta E: < 2 (sRGB)
- Flicker-free
- Pixel Density: 93.24 PPI
- LowBlue Mode
- Display Screen Coating: Anti-Glare, 3H, Haze 25%
- Low Input Lag
- EasyRead
- HDR: HDR 10 supported

Convenience

- Plug & Play Compatibility: DDC/CI, Mac OS X, sRGB, Windows 11 / 10
- User convenience: Power On/Off, Menu/OK, Input/Up, Game Settings/Down, SmartImage game/Back
- OSD Languages: Brazil Portuguese, Czech, Dutch, English, Finnish, French, German, Greek, Hungarian, Italian, Japanese, Korean, Polish, Portuguese, Russian, Spanish, Simplified Chinese, Swedish, Turkish, Traditional Chinese, Ukrainian
- Other convenience: Kensington lock, VESA mount (100x100mm)

Stand

- Tilt: -5/20 degree

Power

- Power supply: Internal, 100-240VAC, 50-60Hz
- Off mode: 0.3 W (typ.)
- On mode: 33.8 W (typ.)
- Standby mode: 0.5 W (typ.)
- Power LED indicator: Operation - White, Standby mode- White (blinking)

Dimensions

- Packaging in mm (WxHxD): 780 x 520 x 188 mm
- Product without stand (mm): 709 x 462 x 96 mm
- Product with stand(max height): 709 x 519 x 250 mm

Weight

- Product with packaging (kg): 9.03 kg
- Product with stand (kg): 6.85 kg
- Product without stand (kg): 6.02 kg

Operating conditions

- Altitude: Operation: +12,000ft (3,658m), Non-operation: +40,000ft (12,192m)
- Temperature range (operation): 0°C to 40 °C
- MTBF: 50,000 (Excluded backlight) hour(s)
- Relative humidity: 20%-80 %
- Temperature range (storage): -20°C to 60 °C

Sustainability

- Environmental and energy: RoHS
- Recyclable packaging material: 100 %
- Specific Substances: Mercury free, PVC / BFR free housing

Compliance and standards

- Regulatory Approvals: CB, TUV/ISO9241-307, TUV-BAUART, EAC, EAEU RoHS, PSB, CE Mark, UKCA, EMF, FCC, ICES-003

Cabinet

- Color: Charcoal
- Finish: Textured

What's in the box?

- Cables: HDMI cable, DisplayPort cable, Power cable
- Monitor with stand
- User Documentation



Issue date 2024-06-24

Version: 1.1.0

EAN: 87 21038 00153 2

© 2024 Koninklijke Philips N.V.
All Rights reserved.

Specifications are subject to change without notice.
Trademarks are the property of Koninklijke Philips N.V.
or their respective owners.

www.philips.com

* Radius of the arc of the display curvature in mm

* For best output performance, please always ensure that your graphic card is capable of achieving the maximum resolution and refresh rate of this Philips display.

* Response time value equal to SmartResponse

* Smart MBR is to adjust brightness for blur reduction, so cannot adjust brightness while MPRT is turned on. To reduce motion blur, LED backlight will strobe synchronously with screen refresh, which may cause noticeable brightness change.

* Smart MBR is gaming-optimized mode. Turn on Smart MBR may cause noticeable screen flickering. It is recommended to turn off when you are not using the gaming function.

* NTSC Area based on CIE1976

* sRGB Area based on CIE1931

* The products and accessories listed on this leaflet may differ by country and region.

* The monitor may look different from feature images.