

Philips Business Monitor
4K UHD monitor with
Thunderbolt™ 4

6000 series

27" (68.6 cm)
3840 x 2160 (4K UHD)

27B2U6903



Redefining workflow productivity

This monitor introduces you to lightning-fast connectivity. With its Thunderbolt 4 port, Smart KVM feature and 4K UHD resolution, this combination offers power delivery, source switching and beautiful imagery in one monitor.

Designed for the way you work

- SoftBlue Technology: for comfortable viewing

Thunderbolt™ 4 for flexibility and performance

- Thunderbolt™ 4 Connection: for lightning-fast connectivity

Designed for the way you work

- PowerSensor 2: for optimised energy efficiency

Superb Picture Quality

- IPS LED wide view technology for image and colour accuracy

Designed for the way you work

- MultiView enables simultaneous dual connection and view
- Tilt, swivel and height-adjust for an ideal viewing position
- Less eye fatigue with Flicker-Free technology
- EasyRead mode for a paper-like reading experience
- Eyesafe-certified blue light protection and colour accuracy

PHILIPS

4K UHD monitor with Thunderbolt™ 4
6000 series 27" (68.6 cm), 3840 x 2160 (4K UHD)

27B2U6903/00

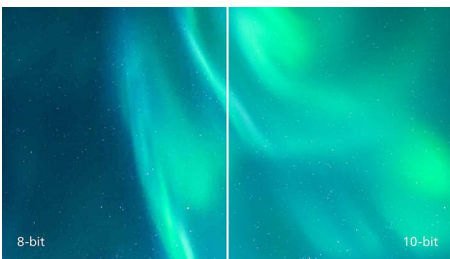
Highlights

IPS technology



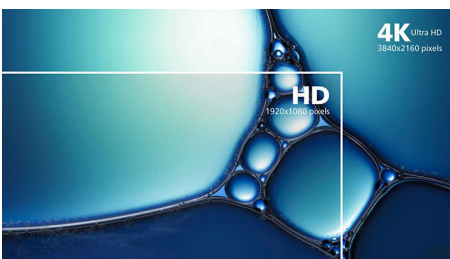
IPS displays use an advanced technology that gives you extra-wide viewing angles of 178/178 degrees, making it possible to view the display from almost any angle. Unlike standard TN panels, IPS displays give you remarkably crisp images with vivid colours, making them ideal not only for Photos, movies and web browsing, but also for professional applications that demand colour accuracy and consistent brightness at all times.

10-bit colours



The 10-bit display delivers rich colour depth with 1.074 billion colours and 12-bit internal processing for recreating smooth, natural colours without gradations and colour banding.

UltraClear 4K UHD Resolution



These Philips displays utilise high-performance panels to deliver UltraClear, 4K UHD (3840 x 2160) resolution images. Whether you are a demanding professional requiring extremely

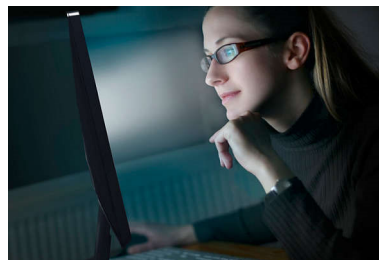
detailed images for CAD solutions, a user of 3D graphics applications or a financial wizard working on huge spreadsheets, Philips displays will make your images and graphics come alive.

SmartKVM



Unlike traditional built-in KVM monitor buttons, the smart KVM allows for switching between sources with the click of a button on your keyboard. When all devices are properly connected, users can easily switch between sources by clicking the "Ctrl" key three times.

SoftBlue Technology



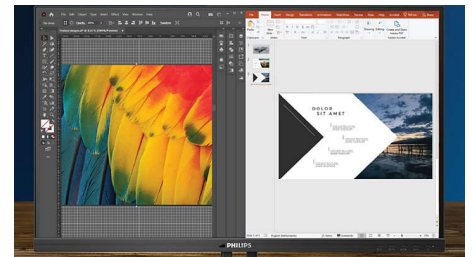
SoftBlue LED technology, combined with the monitor's low blue light panel, is an effective solution to reducing the adverse health effects caused by high exposure to blue light. In this monitor's panel, the ratio of light is reduced by nearly 50 percent while the SoftBlue LED technology works simultaneously by reducing harmful blue light rays emitted from the screen. Additionally, the SoftBlue LED technology is tested and certified by TÜV Rheinland Eyesafe for its effectiveness in reducing blue light emissions.

Flicker-Free technology



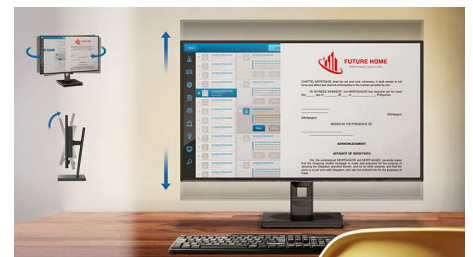
Due to the way brightness is controlled on LED-backlit screens, some users experience flicker on their screen which causes eye fatigue. Philips Flicker-Free technology applies a new solution to regulate brightness and reduce flicker for more comfortable viewing.

MultiView technology



With the ultra-high resolution Philips MultiView display, you can now experience a world of connectivity. MultiView enables active dual connect and view so that you can work with multiple devices like a PC and notebook simultaneously, for complex multitasking.

Compact Ergo Base



The Compact Ergo Base is a people-friendly Philips monitor base that tilts, swivels and height-adjusts so each user can position the monitor for maximum viewing comfort and efficiency.



Specifications

Connectivity

- Signal Input: HDMI 2.0 x 2, DisplayPort 1.4 x 1, Thunderbolt 4 x 1 (upstream, DP Alt mode, Data, PD up to 100 W)
- Sync Input: Separate Sync, Sync on Green
- Audio (In/Out): Audio out/Microphone in combo jack
- RJ45: Ethernet LAN up to 2.5 G, Wake on LAN
- HDCP: HDCP 1.4 (HDMI/DisplayPort/Thunderbolt 4), HDCP 2.2 (HDMI/DisplayPort/Thunderbolt 4)
- HBR3: HBR 3 (DisplayPort/Thunderbolt 4)
- USB Hub: USB 3.2, Gen2, 10 G; Upstream: 1 x Thunderbolt 4, 1 x USB-C1 (data); Downstream: 1 x Thunderbolt 4, USB-A x 4 (with x 1 fast charge B.C 1.2), USB-C2 x 1 (data, 15 W)

Picture/Display

- Panel Size: 27 inch/68.5 cm
- Aspect ratio: 16:9
- LCD panel type: IPS technology
- Backlight type: W-LED system
- Pixel pitch: 0.1554 x 0.1554 mm
- Brightness: 350 cd/m²
- Display colours: 1.07B (10 bits)
- Colour gamut (typical): sRGB 96%, NTSC 110%*
- Contrast ratio (typical): 1000:1
- SmartContrast: 50,000,000:1
- Response time (typical): 4 ms (Grey to Grey)*
- Viewing angle: 178° (H)/178° (V), @ C/R > 10
- Picture enhancement: SmartImage
- Maximum resolution: HDMI: 3840 x 2160@60 Hz (8 bits); DP1.4/TBT: 3840 x 2160@60 Hz (10 bits)*
- Effective viewing area: 596.736 (H) x 335.664 (V) mm
- Scanning Frequency: 30–140 kHz (H)/23–75 Hz (V)
- sRGB
- Delta E: <2
- SoftBlue

- Flicker-free
- Pixel Density: 163 PPI
- LowBlue Mode
- Display Screen Coating: Anti-Glare, 3H, Haze 25%
- SmartUniformity: 93~105%
- EasyRead
- Adaptive sync

Power Delivery

- Max power delivery: Thunderbolt™ 4 (input): up to 96 W (5V/3A, 7V/3A, 9V/3A, 10V/3A, 12V/3A, 15V/3A, 20V/4.8A)*
- Version: USB PD version 3.0

Convenience

- Built-in Speakers: 3 W x 2
- Plug and Play Compatibility: DDC/CI, Mac OS X, sRGB, Windows 11/10
- User convenience: SmartImage, Input, User, Menu, Power On/Off, Mute, Handup, BusyLight
- OSD Languages: Brazil Portuguese, Czech, Dutch, English, French, Finnish, German, Greek, Hungarian, Italian, Japanese, Korean, Portuguese, Polish, Russian, Simplified Chinese, Spanish, Swedish, Traditional Chinese, Turkish, Ukrainian
- Other convenience: Kensington lock, VESA mount (100 x 100 mm), Earphone hook
- Control software: SmartControl
- MultiView: PIP/PBP mode, 2 x devices
- KVM: Yes (Thunderbolt 4/USB-C1)
- SmartKVM

Stand

- Height adjustment: 150 mm
- Swivel: -/+ 180 degree
- Tilt: -5/30 degree

Power

- ECO mode: 20.9 W (typ.)
- Power supply: Built-in, 100–240 VAC, 50–60 Hz
- Off mode: 0.40 W (typ.)

- On mode: 28.6 W (typ.) (Energy Star test method)
- Standby mode: 0.45 W (typ.)
- Power LED indicator: Operation - White, Standby mode - White (flashing)
- Energy Label Class: E

Dimensions

- Packaging in mm (W x H x D): 780 x 480 x 161 mm
- Product without stand (mm): 613 x 371 x 59 mm
- Product with stand (max height): 613 x 544 x 230 mm

Weight

- Product with packaging (kg): 10.19 kg
- Product with stand (kg): 7.15 kg
- Product without stand (kg): 5.10 kg

Operating conditions

- Altitude: Operation: +12,000 ft (3658 m), Non-operation: +40,000 ft (12,192 m)
- Temperature range (operation): 0°C to 40 °C
- Relative humidity: 20%-80 %
- Temperature range (storage): -20°C to 60 °C
- MTBF (demonstrated): 70,000 hrs (excluded backlight)

Sustainability

- Environmental and energy: Energy Star 8.0, EPEAT*, RoHS, PowerSensor 2*, LightSensor
- Post-consumer recycled plastic: 85%
- Recyclable packaging material: 100 %
- Specific Substances: Mercury free, PVC/BFR free housing

Compliance and standards

- Regulatory Approvals: CB, CE Mark, TUV/GS, TUV Ergo, TCO 9.0, TCO Certified Edge, EAC, EAEU RoHS, UKCA, FCC, ICES-003

Specifications

Cabinet

- Finish: Texture
- Foot: Silver
- Front bezel: Charcoal
- Rear cover: Charcoal

What's in the box?

- Cables: HDMI cable, DisplayPort cable, TBT4 cable, Power cable
- Monitor with stand
- User Documentation



Issue date 2024-09-02

Version: 4.4.1

EAN: 87 12581 80474 9

© 2024 Koninklijke Philips N.V.
All Rights reserved.

Specifications are subject to change without notice.
Trademarks are the property of Koninklijke Philips N.V.
or their respective owners.

www.philips.com

- * "IPS" word mark / trademark and related patents on technologies belong to their respective owners.
- * Response time value equal to SmartResponse
- * sRGB Area based on CIE1931, NTSC Area based on CIE1976
- * Please note that the maximum resolution is 3840 x 2160@60 Hz, 8 bits, when the daisy chain connects via Thunderbolt 4.
- * Please note that the PowerSensor 2 is only functional with Windows 11 installed. When PowerSensor 2 is activated, WAL means Walk Away Lock and WOA means Wake On.
- * The Thunderbolt port power delivery of this display is up to 100 W (96 W typically); the maximum power delivery will depend on your device.
- * When calculating energy costs saving from PowerSensor, both USB and Power delivery are excluded.
- * EPEAT rating is valid only where Philips registers the product. Please visit <https://www.epeat.net/> for registration status in your country.
- * The monitor may look different from feature images.
- * The products and accessories listed on this leaflet may differ by country and region.