

Acer recommends Windows.

acer

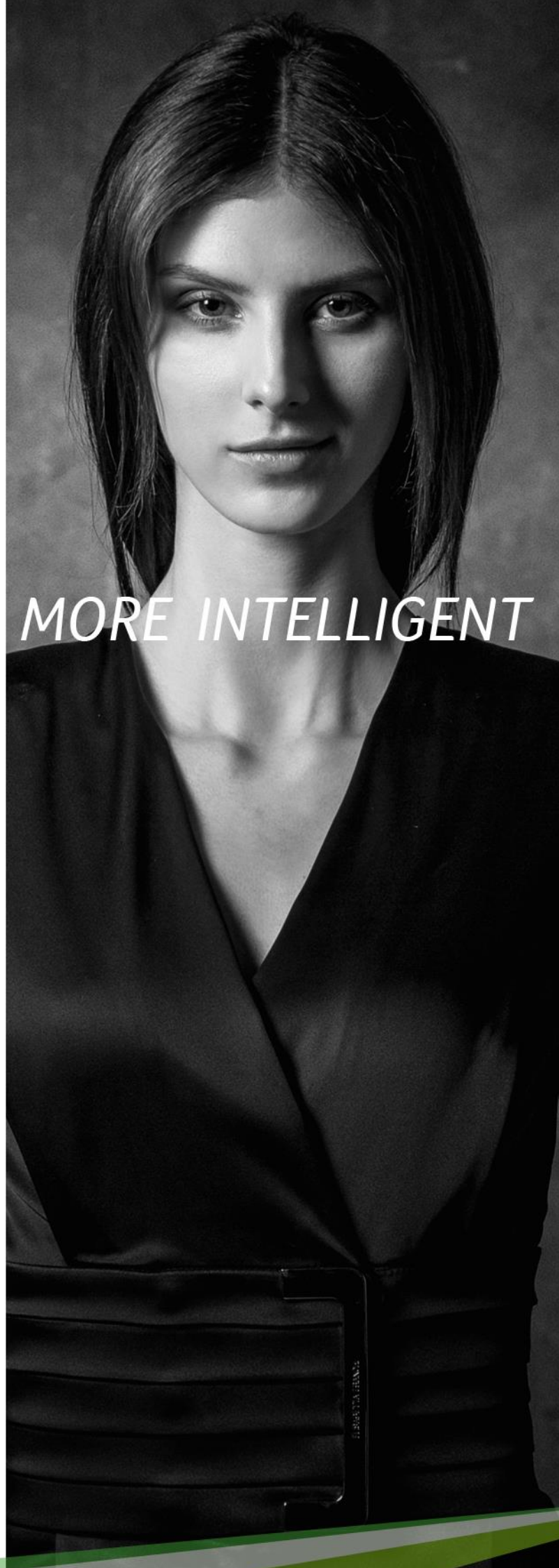
ETOUCH MORE INTELLIGENT

Aspire R13

R7-371T

Dynamic flexibility, masterfully
crafted and brilliantly creative

- The future of flexibility
- Masterfully built
- Brilliantly creative



SPECIFICATIONS

Aspire R 13 R7-371T



Product views	1 Camera activity LED 2 HDMI® port 3 Two USB 3.0 ports 4 Combo audio jack compatible with phone headsets	5 Touchpad 6 Acer Crystal Eye HD webcam 7 13.3" LED-backlit TFT LCD 8 Indicator LEDs 9 Dual microphones	10 Power button 11 DC-in jack 12 USB 2.0 port 13 SD™ card reader
Operating system ¹	Windows 8.1 Pro 64-bit ²		Windows 8.1 64-bit ²
CPU and chipset ¹	Intel® Core™ processor i7-5500U		Intel® Core™ processor i5-5200U
Memory ^{1,3,4,5}	Dual-channel LPDDR3 SDRAM support: • 8 GB of LPDDR3 system memory		Dual-channel LPDDR3 SDRAM support: • 4 GB of LPDDR3 system memory
Display	13.3" WQHD 2560 x 1440, high-brightness LED-backlit TFT LCD with integrated 10-finger multi-touch • 16:9 aspect ratio; wide viewing angle up to 160 degrees; mercury free, environment friendly		
	13.3" display with IPS (In-Plane Switching) ⁶ technology, FHD 1920 x 1080 resolution, high-brightness, LED-backlit TFT LCD with integrated 10-finger multi-touch • 16:9 aspect ratio; wide viewing angle; mercury free, environment friendly		
Graphics ¹	Intel® HD graphics 5500		
Audio	Certified for Skype	Optimized Dolby® Digital Plus Home Theater® audio enhancement ⁷	Two built-in stereo speakers Dual built-in microphones
Storage ⁸	Solid state drive: • 256 GB / 512 GB / 1 TB, SATA 6 Gb/s, RAID 0 • 128 / 256 / 512 GB, SATA 6 Gb/s		Card reader: • SD™ card
Webcam ¹	Video conferencing • Acer Crystal Eye HD webcam with 1280 x 720 resolution and 720p HD audio/video recording		
Wireless and networking ^{1,9,10}	WLAN: • Acer InViLink™ Nplify™ 802.11a/b/g/n wireless LAN • Intel® Dual Band Wireless-AC, 802.11ac/a/b/g/n wireless LAN with Acer Nplify™		WPAN: • Bluetooth® 4.0
Privacy control ¹	BIOS user, supervisor, HDD passwords		
Dimensions and weight ¹¹	343.8 (W) x 230.35 (D) x 17.95 (H) mm (13.54 x 9.07 x 0.71 inches)		1.5 kg (3.31 lbs.) with 4-cell battery pack
Power adapter and battery	ACPI 5.0 CPU power management standard: supports Standby and Hibernation power-saving modes		
	Power adapter: 3-pin 45 W AC adapter Battery: 48 Wh 3220 mAh 15.2 V 4-cell Li-ion battery pack		Battery life: • Up to 10 hours ¹² (models with FHD display; based on MobileMark® 2012 test) • Up to 9 hours ¹² (models with WQHD display; based on MobileMark® 2012 test)
Input and control	Keyboard: 67-/68-/72-key Acer FineTip backlit keyboard with international language support Touchpad: Multi-gesture touchpad, supporting two-finger scroll and pinch. Swipes access charms, application commands • Microsoft Precision Touchpad Certification		
Sensors	Intelligent gyroscope, accelerometer (G sensor) and e-compass		Ambient light sensor, supporting automatic display brightness and keyboard backlight control
Windows Store apps ¹³	Acer branded • Acer Explorer		
Windows Desktop apps ¹³	Acer branded • abDocs • abFiles • abMedia • abPhoto • abPortal • Acer Accessory Store	• Acer Hover Access • Acer Identity Card • Acer Live Updater • Acer Power Management • Acer Recovery Management • Acer Registration • Acer Screen Grasp	• Acer Touch Tools • Acer Video Player Productivity • Office 2013 Security • McAfee® Internet Security
Options and accessories	Acer HDMI® -to-VGA converter	Acer USB-to-LAN cable	Acer Active Pen (black anodized aluminum) Dark gray leather portfolio cover
Warranty	One-year International Travelers Warranty (ITW)		

1. Specifications vary depending on model.
2. 64-bit software is required to enjoy the advantages of 64-bit processing.
3. Shared system memory may be allocated to support graphics, depending on system memory size and other factors.
4. Actual system memory available to the operating system will be reduced by any memory used by the graphics solution and resources required by the operating environment.
5. Memory speed may vary, depending on the CPU, chipset or memory fitted.
6. A 64-bit operating system is required to enjoy the ultimate performance of 4 GB or higher memory.
7. All brands and product names mentioned herein include trademarks of their respective companies and are used solely to describe or identify the products.
8. Dolby® is a registered trademark of Dolby® Laboratories. Dolby Digital Plus® and Dolby Digital Plus® Home Theater® are trademarks of Dolby® Laboratories.
9. 1 GB is 1 billion bytes. 1 TB is 1000 GB. Actual formatted capacity is less and may vary depending on preloaded materials and operating environment. Acer Recovery Management uses a portion of the stated hard disk capacity as dedicated backup space.
10. Actual throughput may vary depending on network conditions and environmental factors such as network traffic or overhead, building construction and access point settings.
11. Subject to availability.
12. Weight may vary depending on product configuration, vendor components, manufacturing variability, and selected options.
13. The listed battery life is based on MobileMark 2012[®] productivity mode testing with wireless on. Details of MobileMark 2012[®] testing are available at www.bapco.com. Battery life rating is for comparison purposes only. Actual battery life varies by model, configuration, applications, power management settings, operating conditions, and utilized features. A battery's maximum capacity decreases with time and use.
13. Bundled software may vary depending on hardware configuration, OS and regional availability.

As a phenomenon known to thin-film transistors (TFTs), liquid crystal displays (LCDs) commonly exhibit a small number of discoloration dots, as so-called "non-conforming pixels." This phenomenon is a limitation of TFT LCD technology, not a product defect, and as such is not covered by Acer's warranty. In a continuing effort to improve the quality of our products, information in this document is subject to change without notice. Images shown are only representations of some of the configurations available for this model. Availability may vary depending on region. Microsoft and Windows are registered trademarks of Microsoft Corporation. Intel, Pentium, Pentium Inside and Celeron are trademarks of Intel Corporation in the U.S. and other countries.

© 2014. All rights reserved.

About Acer

Established in 1976, Acer is a hardware + software + services company dedicated to the research, design, marketing, sale and support of innovative products that enhance people's lives. Acer's product offering includes PCs, displays, projectors, servers, tablets and smartphones — tools our customers need to explore beyond limits and experience more. Acer employs 7,400 people and ranks No. 4 for total PCs globally (IDC 2013). Revenues for 2013 reached US\$12.02 billion. Please visit www.acer.com for more information.

