

LEGION 7i (16")

THE WORLD'S FIRST 16" QHD GAMING LAPTOP.

Underneath the Legion 7i's refined aerospace-grade aluminum Storm Grey exterior is a savage engine—the latest generation Intel® Core™ processing and up to 165W NVIDIA® GeForce RTX™ 3080 Graphics—AI-optimized via the Legion AI Engine with next-gen Legion Coldfront 3.0 thermals including a hi-performance vapor chamber to support the highest possible resolution on a gaming laptop at 2560 x 1600. The taller 16:10 aspect ratio and up-to-165 Hz refresh rates of the 16" display place you in the gaming "winning zone," raising your sightlines and strengthening your immersion, so you'll detect threats faster and dive deeper into enthralling tower-level, ray tracing-enabled cinematics and immersive 3D Nahimic audio.

WHY YOU SHOULD BUY THE LENOVO LEGION 7i (16")



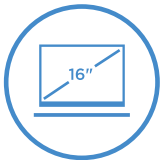
Gaming happens with Intel®

11th Generation Intel® Core™ H-Series processors allow you to create and dominate with 45 Watts of dedicated processing power.



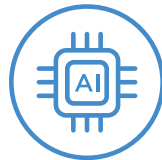
RTX. It's On.

NVIDIA® GeForce RTX™ 30 Series graphics bring 2nd Generation Ray Tracing, 3rd Generation AI Tensor Cores and more for a huge leap in graphical performance.



Set your sights higher

Cinema-like gaming moves into the next decade with the World's First 16" WQXGA gaming display on a laptop. Enjoy WQXGA (2560 x 1600) resolution, 165 Hz refresh rate, a 16:10 aspect ratio with best-in-class color accuracy and high dynamic range.



Boost framerates with the Lenovo Legion AI Engine

Exclusive to Lenovo Legion laptops, the Lenovo Legion AI Engine, a system of AI solutions, dynamically shifts power between the CPU and GPU for more FPS on today's top AAA titles.



WWW.LENOVO.COM



Lenovo

LEGION 7i (16")

SPECIFICATIONS

Lenovo Legion 7i 16ITH-6*

PERFORMANCE

Processor

11th Generation Intel® Core™ i9-11980HK
11th Generation Intel® Core™ i7-11800H

Operating System

Windows 10 Pro
Windows 10 Home

Graphics

**NVIDIA® GeForce RTX™ 3080 Laptop GPU
16 GB GDDR6**

Listed Boost Clock 1545 MHz, Achieved
Boost Clock 1710 MHz, Maximum Graphics
Power 165W¹

**NVIDIA® GeForce RTX™ 3070 Laptop GPU
8 GB GDDR6**

Listed Boost Clock 1560 MHz, Achieved
Boost Clock 1620 MHz, Maximum Graphics
Power 140W¹

**NVIDIA® GeForce RTX™ 3060 Laptop GPU
6 GB GDDR6**

Listed Boost Clock 1425 MHz, Achieved
Boost Clock 1702 MHz, Maximum Graphics
Power 130W¹

Memory

3200 MHz DDR4 : 16 GB / 32 GB

Storage

PCIe SSD : 512 GB / 1 TB / 2 TB

**Intel® Optane™ H10
with SSD Support : 1 TB + 32 GB**

Battery²

Up to 6.6 Hours (Target)³
Rapid Charge Boost⁴

Power Adapter

300W Slim Adapter
95W (Type-C™ PD)



DESIGN

Display

16" WQXGA (2560 x 1600) IPS; 16:10 (165 Hz /
3 ms Response Time⁵ / 100% sRGB / 500 nits /
Up to VESA DisplayHDR™ 400 Certified /
Dolby Vision® Support /
NVIDIA® G-SYNC™ Support)

Dimensions (W x D x H) (Target)³

(mm) : 360 x 260 x 20.1-23.5
(inches) : 14.17" x 10.23" x 0.79"-0.92"

Weight (Target)³

Starting at 2.5 kg (5.5 lbs)

Backlit Keyboard

Corsair® iCUE RGB

Color

Storm Grey



CONNECTIVITY

Webcam

Built-in HD Webcam (720p) with E-Shutter

WLAN

Killer™ WiFi AX1650 (2x2)⁶
2x2 Intel® WiFi 6 (802.11 ax)⁷

Bluetooth*

Starting from Bluetooth® 5.1

Audio

2 x 2W Super Linear Speaker System and
Smart Amp with Nahimic Audio

Input/Output (I/O) Ports

Left Side

1 x Thunderbolt™ 4
1 x Audio Jack

Right Side

1 x USB Type-C™ (USB 3.2⁸ Gen 1)
1 x E-Shutter Button

Rear

3 x USB Type-A 3.2⁸ Gen 1 (1 x Always-On 5V)
1 x Thunderbolt™ 4
1 x HDMI™ 2.1
1 x RJ45 Ethernet
1 x DC-In

PRELOADED SOFTWARE

- Lenovo Vantage
- Corsair® iCue RGB Application
- Pantone X-Rite® Color Management System
- Nahimic Audio for Gamers
- Tobii Horizon

¹ Supports NVIDIA® Max-Q Technologies: Advanced Optimus, Resizable BAR, Dynamic Boost 2.0.

² All battery life claims are approximate and based on results using the MobileMark™ 2018 v1.0.2.46 battery life benchmark test. Actual battery life will vary and depends on many factors such as product configuration and usage, software use, wireless functionality, power management settings, and screen brightness. The maximum capacity of the battery will decrease with time and use. Testing by Lenovo.

³ Target to be updated Summer 2021

⁴ 15-minute charge equals 2 hours of battery life.

⁵ With Overdrive (OD).

⁶ Optional.

⁷ Base.

⁸ The actual transfer speed of the USB 3.2 will vary and, depending on many factors, such as the processing capability of host and peripheral devices, file attributes and other factors related to system configuration and your operating environments, will be slower than a speed of 20 Gbit/s.

LENOVO SERVICES

Warranty Upgrades - On-site / In-Home Service

Maximizes PC uptime and productivity by providing convenient, fast repair services in your own home.

Accidental Damage Protection

Avoid the hassles of unexpected repair costs. Provides coverage for non-warranted damage incurred under normal operating

conditions, such as minor spills, drops or damage to the integrated screen.

Warranty Extensions (1-to-3 Years Total Duration)

This fixed-term, fixed-cost service helps accurately budget for PC expenses, protect your valuable investment and potentially lower the cost of ownership over time.

* Example of Lenovo catalogue naming convention



OPTIONS & ACCESSORIES



Lenovo Legion
15.6" Recon Gaming
Backpack



Lenovo Legion
H500 Pro 7.1
Surround Sound
Gaming Headset

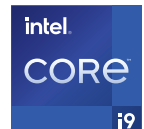


Lenovo Legion
M500 RGB
Gaming Mouse



WWW.LENOVO.COM

Lenovo reserves the right to alter product offerings and specifications at any time, without notice. Lenovo makes every effort to ensure accuracy of all information but is not liable or responsible for any editorial, photographic or typographic errors. All images are for illustration purposes only. For full Lenovo product, service and warranty specifications visit www.lenovo.com. Lenovo makes no representations or warranties regarding third party products or services. **Trademarks:** The following are trademarks or registered trademarks of Lenovo: Lenovo, the Lenovo logo, ideapad, IdeaCentre, yoga and yoga home. Microsoft, Windows and Vista are registered trademarks of Microsoft Corporation. Ultrabook, Celeron, Celeron Inside, Core Inside, Intel, Intel Logo, Intel Atom, Intel Atom Inside, Intel Core, Intel Inside, Intel Inside Logo, Intel vPro, Itanium, Itanium Inside, Pentium, Pentium Inside, vPro Inside, Xeon, Xeon Phi, and Xeon Inside are trademarks of Intel Corporation in the U.S. and/or other countries. Other company, product and service names may be trademarks or service marks of others. Visit www.lenovo.com/lenovo/us/en/safecomp/ periodically for the latest information on safe and effective computing. ©2021 Lenovo. All rights reserved.



Lenovo